

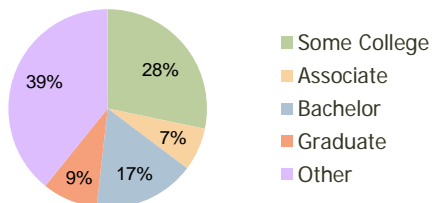
Clinton Plaza Clinton, MD	1.00 Mile Radius	3.00 Mile Radius	5.00 Mile Radius
------------------------------	---------------------	---------------------	---------------------

Current Year Demographics

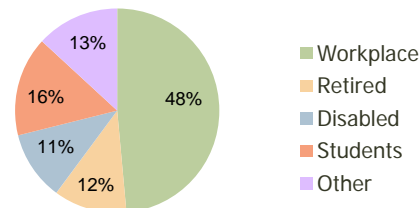
Current Population	7,388	44,438	111,323
Adjusted Total Pop (Carrier Route)	7,004	47,180	120,228
Total Daytime Pop	10,503	40,485	89,370
Workplace Pop	6,729	19,654	34,309
Average Household Income	\$98,759	\$100,817	\$95,314
Median Household Income	\$86,976	\$90,946	\$83,715
Total Housing Units	2,536	15,162	39,580
Median Home Value	\$289,070	\$289,867	\$281,905
Bachelors Degree	15.3%	16.5%	16.9%
Graduate Degree	7.7%	9.0%	9.4%
Total Consumer Spending/Capita	\$319	\$319	\$308

2016 Demographic Projections

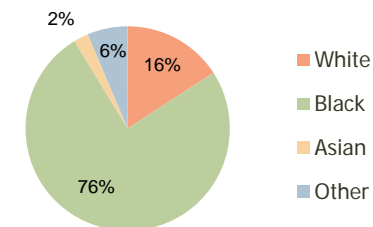
Projected Population	7,201	45,917	115,019
Projected 5 Year Pop Growth	-0.5%	0.7%	0.7%
Projected Households	2,471	15,666	40,832
Projected 5 Year Household Growth	-0.5%	0.7%	0.6%



Education (3-Mile)



Daytime Population (3-Mile)

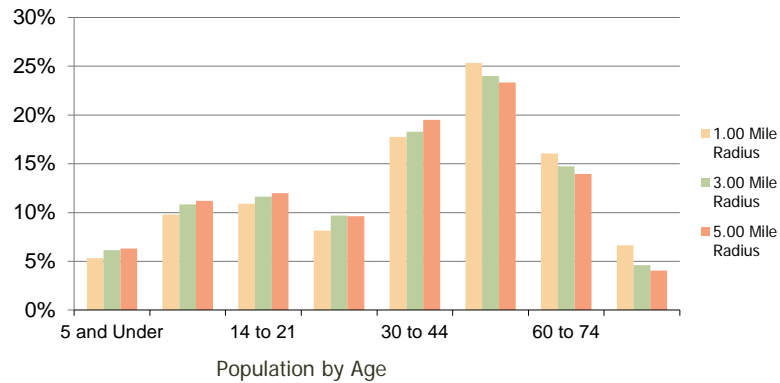


Ethnicity (3-Mile)

This report was produced using data from private and government sources deemed to be reliable and is herein provided without representation or warranty.

Clinton Plaza Clinton, MD	1.00 Mile Radius	3.00 Mile Radius	5.00 Mile Radius
-------------------------------------	------------------	------------------	------------------

Population by Age Range



Household Income by Income Range



	1.00 Mile Radius	3.00 Mile Radius	5.00 Mile Radius
Population			
Current Estimated Population	7,388	44,438	111,323
2010 Census Population	7,520	44,034	110,353
2000 Census Population	7,373	44,125	107,740
Historical Annual Growth 2000 to 2010	0.20%	-0.02%	0.24%
Estimated Annual Growth 2010 to 2011	-1.01%	0.52%	0.50%
Projected Annual Growth 2011 to 2016	-0.51%	0.66%	0.66%
Households			
Current Estimated Households	2,536	15,162	39,580
2010 Census Households	2,581	15,021	39,246
2000 Census Households	2,491	14,342	36,905
Historical Annual Growth 2000 to 2010	0.4%	0.5%	0.6%
Estimated Annual Growth 2010 to 2011	-1.0%	0.5%	0.5%
Projected Annual Growth 2011 to 2016	-0.5%	0.7%	0.6%
Population per Household	2.8	2.9	2.8
Ethnicity			
White	14.9%	15.9%	12.6%
Black or African American	76.5%	75.4%	78.9%
Asian & Pacific Islander	2.6%	2.4%	2.2%
Other Races	6.0%	6.4%	6.3%
Hispanic or Latino Population	6.2%	6.4%	6.0%
Non Hispanic or Latino Population	93.8%	93.6%	94.0%

This report was produced using data from private and government sources deemed to be reliable and is herein provided without representation or warranty.