

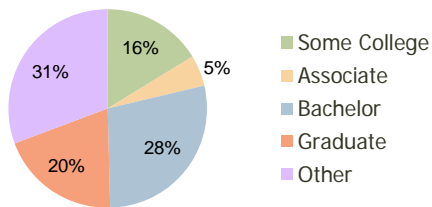
Cameron Village Raleigh, NC	1.00 Mile Radius	3.00 Mile Radius	5.00 Mile Radius
--------------------------------	---------------------	---------------------	---------------------

### Current Year Demographics

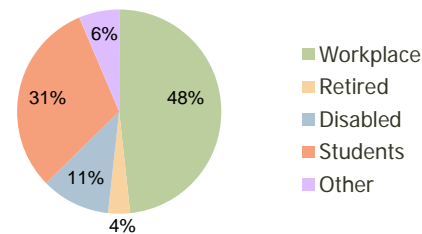
Current Population	14,707	93,961	206,161
Adjusted Total Pop (Carrier Route)	10,973	80,689	196,101
Total Daytime Pop	35,579	194,003	336,899
Workplace Pop	24,463	93,634	179,978
Average Household Income	\$75,607	\$74,070	\$69,162
Median Household Income	\$49,695	\$44,870	\$47,512
Total Housing Units	6,181	35,283	82,422
Median Home Value	\$334,172	\$246,462	\$182,317
Bachelors Degree	37.7%	28.3%	27.5%
Graduate Degree	25.3%	19.7%	16.1%
Total Consumer Spending/Capita	\$271	\$274	\$274

### 2016 Demographic Projections

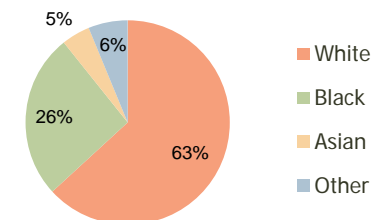
Projected Population	16,228	109,399	244,120
Projected 5 Year Pop Growth	2.0%	3.1%	3.4%
Projected Households	7,110	42,469	99,322
Projected 5 Year Household Growth	2.8%	3.8%	3.8%



Education (3-Mile)



Daytime Population (3-Mile)

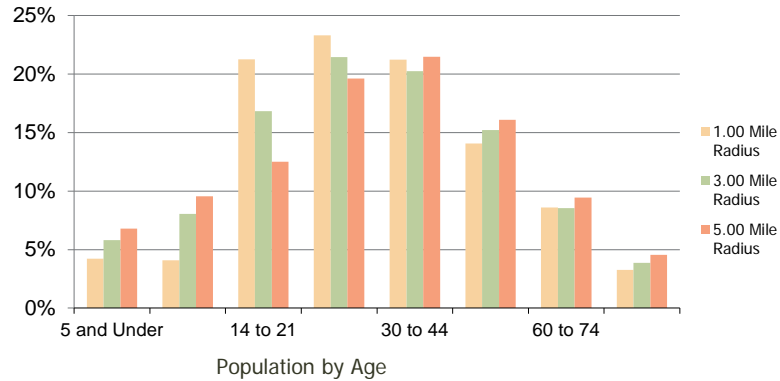


Ethnicity (3-Mile)

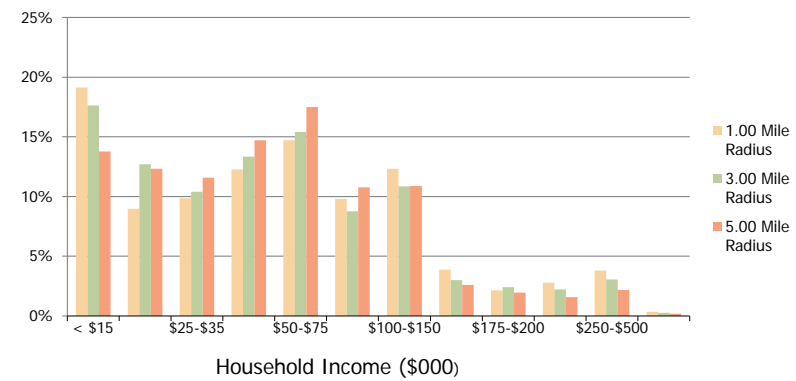
This report was produced using data from private and government sources deemed to be reliable and is herein provided without representation or warranty.

Cameron Village Raleigh, NC	1.00 Mile Radius	3.00 Mile Radius	5.00 Mile Radius
--------------------------------	---------------------	---------------------	---------------------

### Population by Age Range



### Household Income by Income Range



<b>Population</b>	Current Estimated Population	14,707	93,961	206,161
	2010 Census Population	14,670	90,365	197,817
	2000 Census Population	11,783	84,518	172,778
	Historical Annual Growth 2000 to 2010	2.22%	0.67%	1.36%
	Estimated Annual Growth 2010 to 2011	0.15%	2.25%	2.39%
<b>Households</b>	Projected Annual Growth 2011 to 2016	1.99%	3.09%	3.44%
	Current Estimated Households	6,181	35,283	82,422
	2010 Census Households	6,179	33,646	78,732
	2000 Census Households	5,722	32,720	68,852
	Historical Annual Growth 2000 to 2010	0.8%	0.3%	1.3%
<b>Ethnicity</b>	Estimated Annual Growth 2010 to 2011	0.0%	2.8%	2.7%
	Projected Annual Growth 2011 to 2016	2.8%	3.8%	3.8%
	Population per Household	1.7	2.2	2.3
	White	82.3%	63.2%	58.0%
	Black or African American	12.0%	26.1%	29.2%
	Asian & Pacific Islander	2.7%	4.5%	3.9%
	Other Races	3.0%	6.2%	8.9%
Hispanic or Latino Population	3.1%	7.3%	11.2%	
Non Hispanic or Latino Population	96.9%	92.7%	88.8%	

This report was produced using data from private and government sources deemed to be reliable and is herein provided without representation or warranty.