

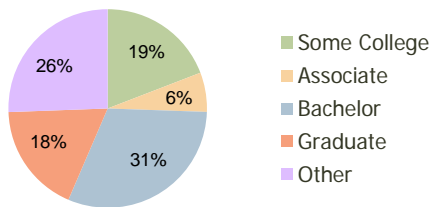
Merchant's Village Charleston, SC	1.00 Mile Radius	3.00 Mile Radius	5.00 Mile Radius
--------------------------------------	---------------------	---------------------	---------------------

### Current Year Demographics

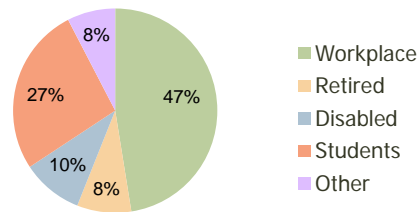
Current Population	5,442	48,610	105,270
Adjusted Total Pop (Carrier Route)	5,549	50,468	110,528
Total Daytime Pop	5,694	72,609	150,038
Workplace Pop	2,929	34,474	76,686
Average Household Income	\$69,629	\$75,756	\$68,738
Median Household Income	\$52,771	\$52,786	\$48,212
Total Housing Units	2,688	21,881	45,406
Median Home Value	\$199,439	\$230,020	\$210,404
Bachelors Degree	28.5%	30.9%	26.0%
Graduate Degree	17.8%	17.9%	15.8%
Total Consumer Spending/Capita	\$257	\$260	\$257

### 2016 Demographic Projections

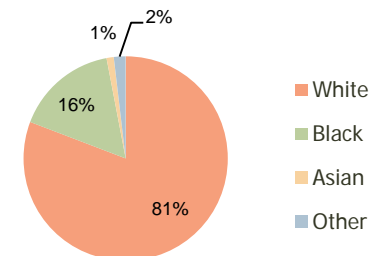
Projected Population	5,518	51,063	108,643
Projected 5 Year Pop Growth	0.3%	1.0%	0.6%
Projected Households	2,733	22,903	46,800
Projected 5 Year Household Growth	0.3%	0.9%	0.6%



Education (3-Mile)



Daytime Population (3-Mile)



Ethnicity (3-Mile)

This report was produced using data from private and government sources deemed to be reliable and is herein provided without representation or warranty.

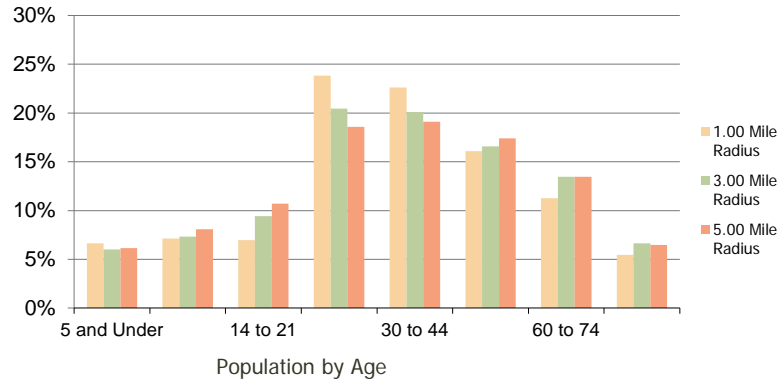
**Merchant's Village**  
Charleston, SC

1.00 Mile  
Radius

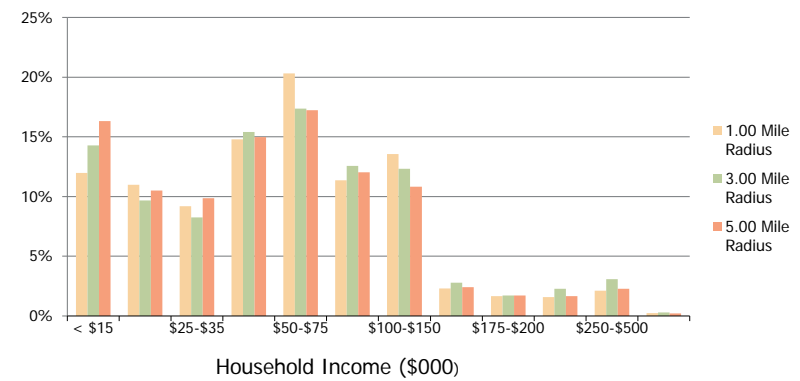
3.00 Mile  
Radius

5.00 Mile  
Radius

**Population by Age Range**



**Household Income by Income Range**



	1.00 Mile Radius	3.00 Mile Radius	5.00 Mile Radius
<b>Population</b>			
Current Estimated Population	5,442	48,610	105,270
2010 Census Population	5,457	48,146	104,884
2000 Census Population	5,051	46,274	101,376
Historical Annual Growth 2000 to 2010	0.78%	0.40%	0.34%
Estimated Annual Growth 2010 to 2011	-0.16%	0.55%	0.21%
Projected Annual Growth 2011 to 2016	0.28%	0.99%	0.63%
<b>Households</b>			
Current Estimated Households	2,688	21,881	45,406
2010 Census Households	2,691	21,579	45,150
2000 Census Households	2,374	20,254	42,461
Historical Annual Growth 2000 to 2010	1.3%	0.6%	0.6%
Estimated Annual Growth 2010 to 2011	-0.1%	0.8%	0.3%
Projected Annual Growth 2011 to 2016	0.3%	0.9%	0.6%
Population per Household	2.0	2.1	2.2
<b>Ethnicity</b>			
White	80.2%	80.8%	68.9%
Black or African American	15.8%	16.2%	27.4%
Asian & Pacific Islander	1.3%	1.1%	1.1%
Other Races	2.7%	1.9%	2.6%
Hispanic or Latino Population	3.0%	2.0%	2.6%
Non Hispanic or Latino Population	97.0%	98.0%	97.4%

This report was produced using data from private and government sources deemed to be reliable and is herein provided without representation or warranty.