

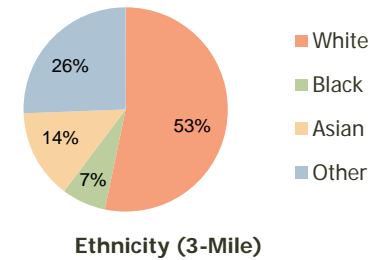
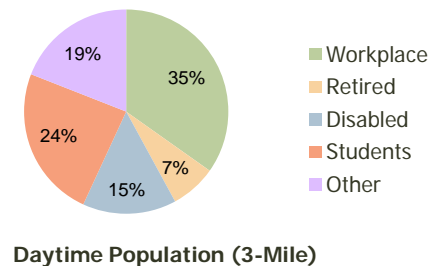
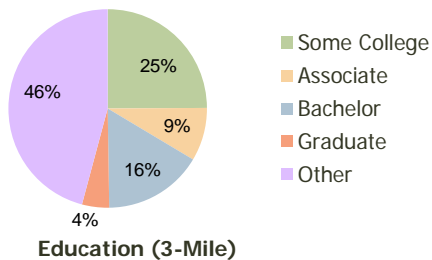
Corral Hollow Tracy, CA	1.00 Mile Radius	3.00 Mile Radius	5.00 Mile Radius
----------------------------	---------------------	---------------------	---------------------

Current Year Demographics

Current Population	22,640	81,007	91,180
Adjusted Total Pop (Carrier Route)	25,029	84,694	95,418
Total Daytime Pop	19,075	74,429	82,925
Workplace Pop	4,953	25,901	28,838
Average Household Income	\$94,928	\$88,110	\$90,232
Median Household Income	\$80,505	\$74,355	\$76,355
Total Housing Units	6,588	23,980	26,899
Median Home Value	\$187,637	\$182,993	\$188,205
Bachelors Degree	15.6%	16.2%	16.9%
Graduate Degree	3.9%	4.4%	4.7%
Total Consumer Spending/Capita	\$316	\$309	\$313

2016 Demographic Projections

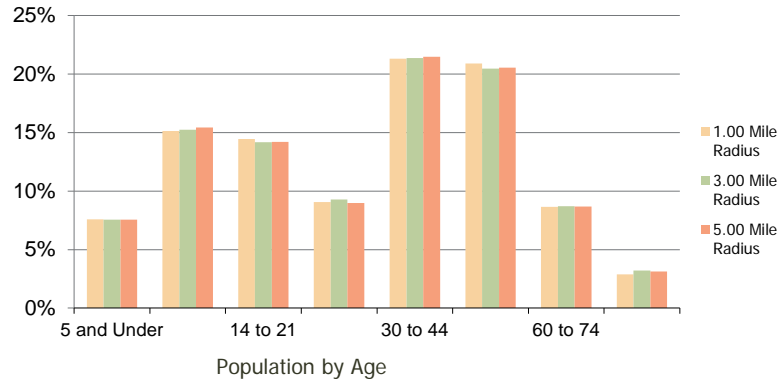
Projected Population	23,843	88,379	99,367
Projected 5 Year Pop Growth	1.0%	1.8%	1.7%
Projected Households	6,958	26,231	29,386
Projected 5 Year Household Growth	1.1%	1.8%	1.8%



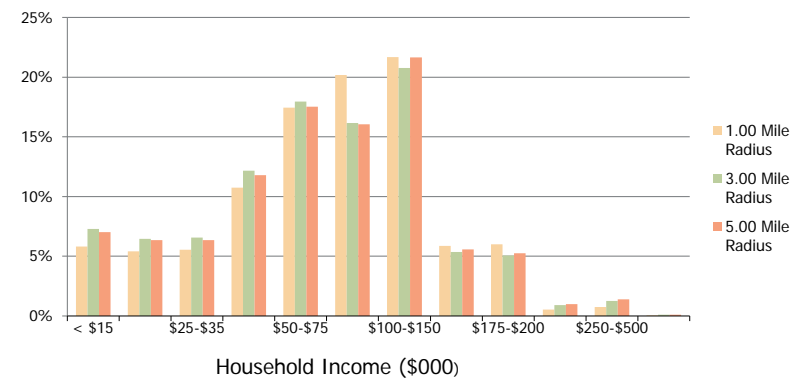
This report was produced using data from private and government sources deemed to be reliable and is herein provided without representation or warranty.

Corral Hollow Tracy, CA	1.00 Mile Radius	3.00 Mile Radius	5.00 Mile Radius
-----------------------------------	------------------	------------------	------------------

Population by Age Range



Household Income by Income Range



	1.00 Mile Radius	3.00 Mile Radius	5.00 Mile Radius
Population			
Current Estimated Population	22,640	81,007	91,180
2010 Census Population	22,736	80,050	90,122
2000 Census Population	16,293	58,235	61,848
Historical Annual Growth 2000 to 2010	3.39%	3.23%	3.84%
Estimated Annual Growth 2010 to 2011	-0.24%	0.68%	0.67%
Projected Annual Growth 2011 to 2016	1.04%	1.76%	1.73%
Households			
Current Estimated Households	6,588	23,980	26,899
2010 Census Households	6,618	23,708	26,599
2000 Census Households	4,953	18,037	19,146
Historical Annual Growth 2000 to 2010	2.9%	2.8%	3.3%
Estimated Annual Growth 2010 to 2011	-0.3%	0.7%	0.6%
Projected Annual Growth 2011 to 2016	1.1%	1.8%	1.8%
Population per Household	3.4	3.4	3.4
Ethnicity			
White	50.9%	53.3%	53.5%
Black or African American	7.0%	7.0%	7.0%
Asian & Pacific Islander	17.0%	14.1%	14.6%
Other Races	25.1%	25.6%	24.9%
Hispanic or Latino Population	35.5%	37.5%	36.2%
Non Hispanic or Latino Population	64.5%	62.5%	63.8%

This report was produced using data from private and government sources deemed to be reliable and is herein provided without representation or warranty.