

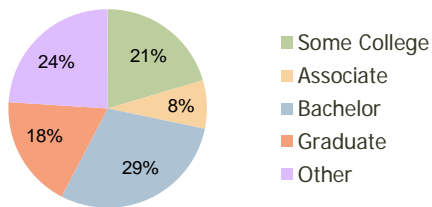
Braemar Village Center Bristow, VA	1.00 Mile Radius	3.00 Mile Radius	5.00 Mile Radius
---------------------------------------	---------------------	---------------------	---------------------

### Current Year Demographics

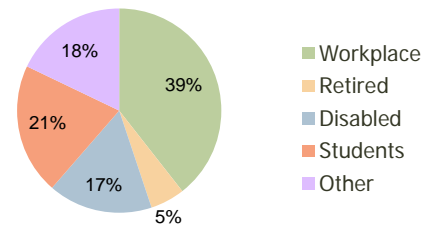
Current Population	11,995	40,326	104,140
Adjusted Total Pop (Carrier Route)	13,852	41,277	108,313
Total Daytime Pop	4,272	24,478	87,058
Workplace Pop	895	9,649	43,003
Average Household Income	\$127,246	\$124,114	\$103,400
Median Household Income	\$116,579	\$113,511	\$88,071
Total Housing Units	3,531	11,855	33,816
Median Home Value	\$352,060	\$333,303	\$301,156
Bachelors Degree	29.1%	29.4%	24.7%
Graduate Degree	19.9%	18.3%	13.7%
Total Consumer Spending/Capita	\$0	\$288	\$296

### 2016 Demographic Projections

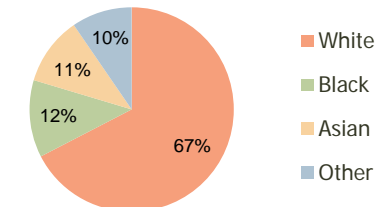
Projected Population	14,188	48,572	122,810
Projected 5 Year Pop Growth	3.4%	3.8%	3.4%
Projected Households	4,151	14,248	39,802
Projected 5 Year Household Growth	3.3%	3.7%	3.3%



Education (3-Mile)



Daytime Population (3-Mile)

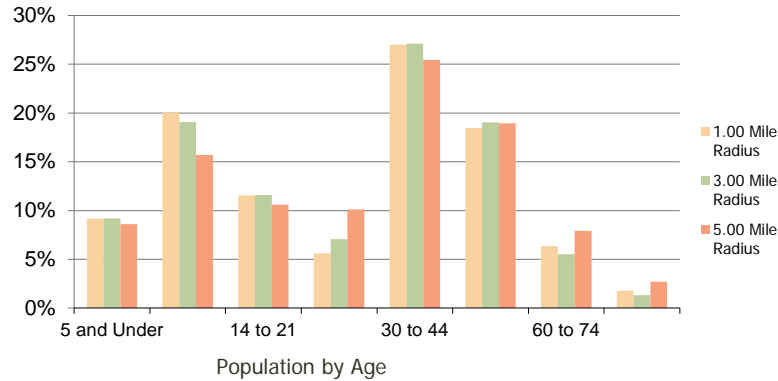


Ethnicity (3-Mile)

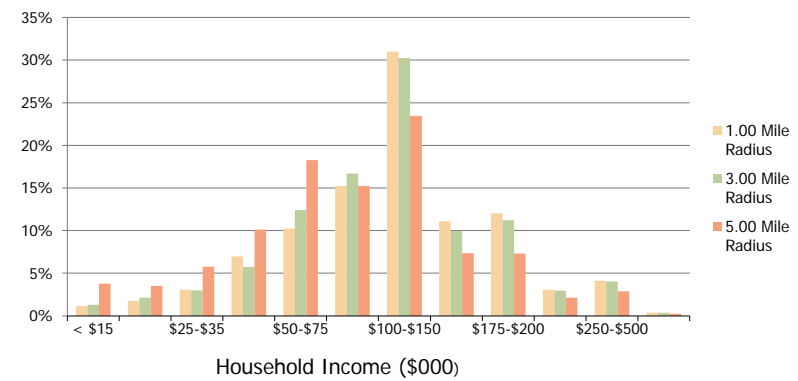
This report was produced using data from private and government sources deemed to be reliable and is herein provided without representation or warranty.

<b>Braemar Village Center</b> Bristow, VA	1.00 Mile Radius	3.00 Mile Radius	5.00 Mile Radius
--	------------------	------------------	------------------

**Population by Age Range**



**Household Income by Income Range**



	1.00 Mile Radius	3.00 Mile Radius	5.00 Mile Radius
<b>Population</b>			
Current Estimated Population	11,995	40,326	104,140
2010 Census Population	11,495	38,318	99,890
2000 Census Population	2,269	10,714	55,368
Historical Annual Growth 2000 to 2010	17.62%	13.59%	6.08%
Estimated Annual Growth 2010 to 2011	2.46%	2.96%	2.41%
Projected Annual Growth 2011 to 2016	3.42%	3.79%	3.35%
<b>Households</b>			
Current Estimated Households	3,531	11,855	33,816
2010 Census Households	3,394	11,275	32,484
2000 Census Households	768	3,540	19,429
Historical Annual Growth 2000 to 2010	16.0%	12.3%	5.3%
Estimated Annual Growth 2010 to 2011	2.3%	2.9%	2.3%
Projected Annual Growth 2011 to 2016	3.3%	3.7%	3.3%
Population per Household	3.4	3.4	3.1
<b>Ethnicity</b>			
White	70.2%	67.4%	62.4%
Black or African American	10.8%	12.2%	13.7%
Asian & Pacific Islander	10.6%	10.8%	8.9%
Other Races	8.3%	9.6%	15.0%
Hispanic or Latino Population	11.8%	13.5%	21.2%
Non Hispanic or Latino Population	88.2%	86.5%	78.8%

This report was produced using data from private and government sources deemed to be reliable and is herein provided without representation or warranty.