

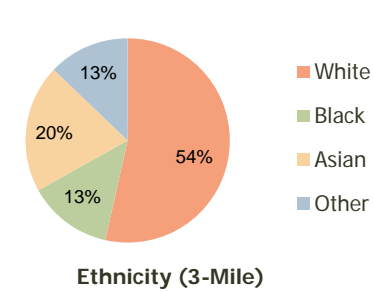
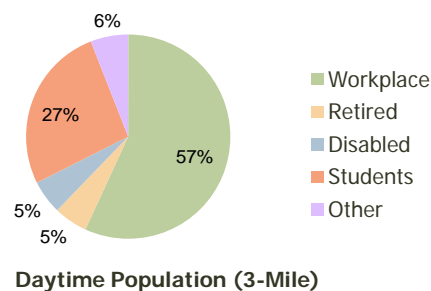
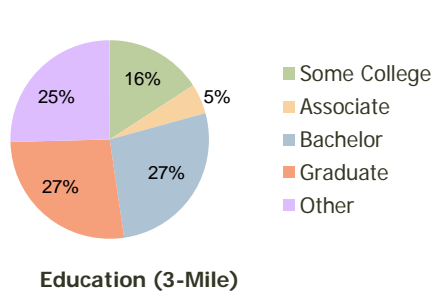
King Farm Village Center Rockville, MD	1.00 Mile Radius	3.00 Mile Radius	5.00 Mile Radius
---	---------------------	---------------------	---------------------

### Current Year Demographics

Current Population	12,038	110,255	271,019
Adjusted Total Pop (Carrier Route)	12,595	112,699	282,567
Total Daytime Pop	21,419	203,695	343,047
Workplace Pop	16,548	115,837	187,728
Average Household Income	\$126,833	\$109,248	\$119,970
Median Household Income	\$108,554	\$88,429	\$96,245
Total Housing Units	4,831	40,300	97,341
Median Home Value	\$476,760	\$396,390	\$426,482
Bachelors Degree	28.7%	27.0%	28.2%
Graduate Degree	39.6%	26.9%	28.6%
Total Consumer Spending/Capita	\$331	\$322	\$330

### 2016 Demographic Projections

Projected Population	13,199	119,727	283,444
Projected 5 Year Pop Growth	1.9%	1.7%	0.9%
Projected Households	5,253	43,777	102,100
Projected 5 Year Household Growth	1.7%	1.7%	1.0%



This report was produced using data from private and government sources deemed to be reliable and is herein provided without representation or warranty.

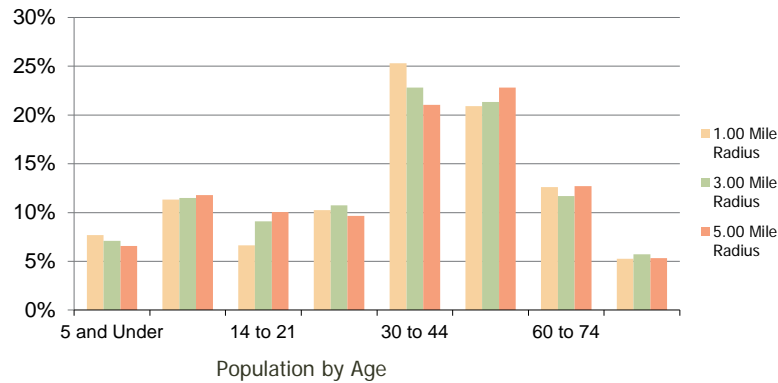
**King Farm Village Center**  
Rockville, MD

1.00 Mile  
Radius

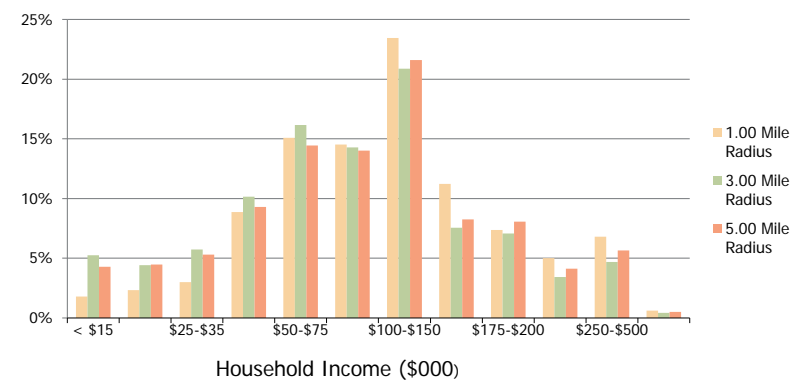
3.00 Mile  
Radius

5.00 Mile  
Radius

**Population by Age Range**



**Household Income by Income Range**



	1.00 Mile Radius	3.00 Mile Radius	5.00 Mile Radius	
<b>Population</b>	Current Estimated Population	12,038	110,255	271,019
	2010 Census Population	11,572	108,820	268,653
	2000 Census Population	4,371	91,339	239,694
	Historical Annual Growth 2000 to 2010	10.23%	1.77%	1.15%
	Estimated Annual Growth 2010 to 2011	2.28%	0.75%	0.50%
<b>Households</b>	Projected Annual Growth 2011 to 2016	1.86%	1.66%	0.90%
	Current Estimated Households	4,831	40,300	97,341
	2010 Census Households	4,671	39,890	96,558
	2000 Census Households	1,604	32,545	85,236
	Historical Annual Growth 2000 to 2010	11.3%	2.1%	1.3%
<b>Ethnicity</b>	Estimated Annual Growth 2010 to 2011	1.9%	0.6%	0.5%
	Projected Annual Growth 2011 to 2016	1.7%	1.7%	1.0%
	Population per Household	2.5	2.7	2.8
	White	58.2%	53.5%	57.0%
	Black or African American	12.3%	13.3%	12.5%
	Asian & Pacific Islander	23.0%	20.3%	18.9%
	Other Races	6.6%	12.9%	11.6%
Hispanic or Latino Population	9.7%	20.0%	17.9%	
Non Hispanic or Latino Population	90.3%	80.0%	82.1%	

This report was produced using data from private and government sources deemed to be reliable and is herein provided without representation or warranty.