

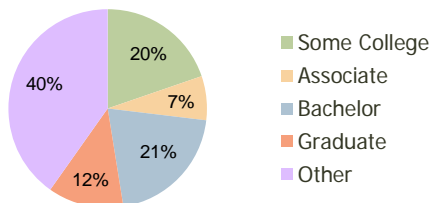
Five Points Plaza Wilton Manors, FL	1.00 Mile Radius	3.00 Mile Radius	5.00 Mile Radius
--	---------------------	---------------------	---------------------

### Current Year Demographics

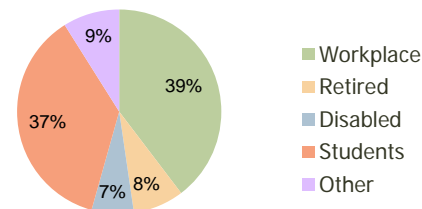
Current Population	18,391	135,721	295,292
Adjusted Total Pop (Carrier Route)	20,599	154,054	333,670
Total Daytime Pop	19,270	227,250	442,688
Workplace Pop	9,122	90,094	198,561
Average Household Income	\$73,967	\$77,493	\$72,108
Median Household Income	\$50,959	\$50,326	\$48,035
Total Housing Units	9,447	64,109	131,295
Median Home Value	\$198,989	\$196,375	\$168,588
Bachelors Degree	19.3%	20.6%	18.7%
Graduate Degree	14.7%	12.3%	10.5%
Total Consumer Spending/Capita	\$264	\$270	\$273

### 2016 Demographic Projections

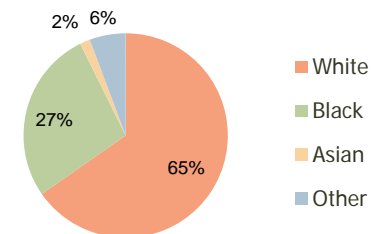
Projected Population	18,410	137,013	297,080
Projected 5 Year Pop Growth	0.0%	0.2%	0.1%
Projected Households	9,439	65,171	133,274
Projected 5 Year Household Growth	0.0%	0.3%	0.3%



Education (3-Mile)



Daytime Population (3-Mile)



Ethnicity (3-Mile)

This report was produced using data from private and government sources deemed to be reliable and is herein provided without representation or warranty.

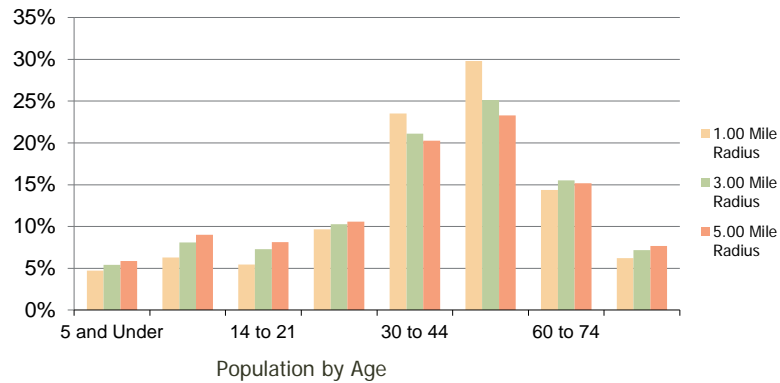
**Five Points Plaza**  
Wilton Manors, FL

1.00 Mile  
Radius

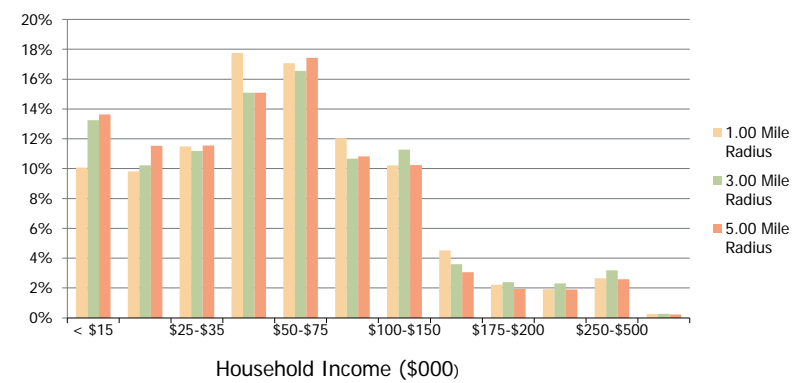
3.00 Mile  
Radius

5.00 Mile  
Radius

**Population by Age Range**



**Household Income by Income Range**



	1.00 Mile Radius	3.00 Mile Radius	5.00 Mile Radius
<b>Population</b>			
Current Estimated Population	18,391	135,721	295,292
2010 Census Population	18,362	136,391	298,603
2000 Census Population	20,167	140,983	304,203
Historical Annual Growth 2000 to 2010	-0.93%	-0.33%	-0.19%
Estimated Annual Growth 2010 to 2011	0.09%	-0.28%	-0.64%
Projected Annual Growth 2011 to 2016	0.02%	0.19%	0.12%
<b>Households</b>			
Current Estimated Households	9,447	64,109	131,295
2010 Census Households	9,440	64,313	132,376
2000 Census Households	9,421	63,449	132,213
Historical Annual Growth 2000 to 2010	0.0%	0.1%	0.0%
Estimated Annual Growth 2010 to 2011	0.0%	-0.2%	-0.5%
Projected Annual Growth 2011 to 2016	0.0%	0.3%	0.3%
Population per Household	1.9	2.1	2.2
<b>Ethnicity</b>			
White	75.7%	65.3%	56.0%
Black or African American	15.1%	27.4%	37.3%
Asian & Pacific Islander	2.0%	1.6%	1.5%
Other Races	7.1%	5.7%	5.2%
Hispanic or Latino Population	18.4%	14.7%	13.4%
Non Hispanic or Latino Population	81.6%	85.3%	86.6%

This report was produced using data from private and government sources deemed to be reliable and is herein provided without representation or warranty.