

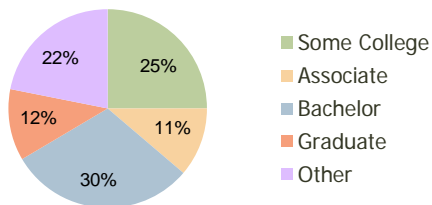
Plantation Plaza Jacksonville, FL	1.00 Mile Radius	3.00 Mile Radius	5.00 Mile Radius
--------------------------------------	---------------------	---------------------	---------------------

### Current Year Demographics

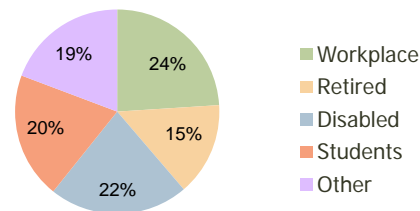
Current Population	7,497	42,406	94,636
Adjusted Total Pop (Carrier Route)	6,823	40,429	98,131
Total Daytime Pop	3,581	21,837	70,740
Workplace Pop	535	5,235	28,518
Average Household Income	\$104,579	\$101,387	\$93,973
Median Household Income	\$90,256	\$86,433	\$78,508
Total Housing Units	2,594	15,176	35,635
Median Home Value	\$213,506	\$198,692	\$179,004
Bachelors Degree	40.3%	30.3%	28.0%
Graduate Degree	12.5%	11.6%	11.8%
Total Consumer Spending/Capita	\$0	\$276	\$281

### 2016 Demographic Projections

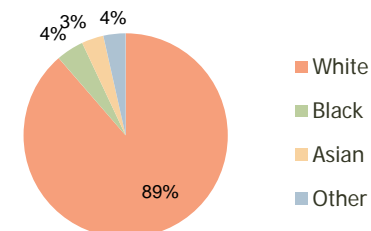
Projected Population	10,055	53,364	111,817
Projected 5 Year Pop Growth	6.0%	4.7%	3.4%
Projected Households	3,486	18,985	41,767
Projected 5 Year Household Growth	6.1%	4.6%	3.2%



Education (3-Mile)



Daytime Population (3-Mile)

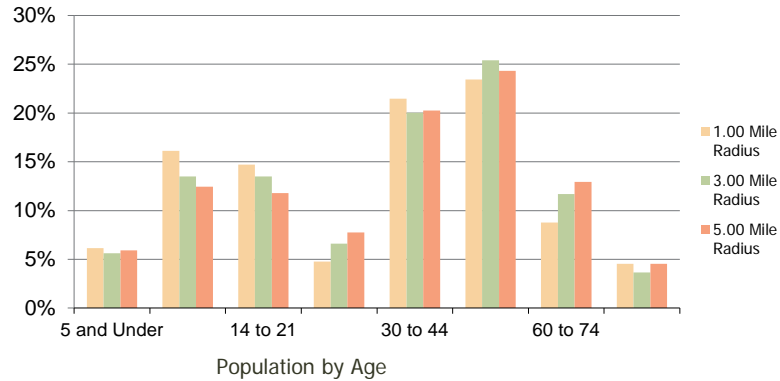


Ethnicity (3-Mile)

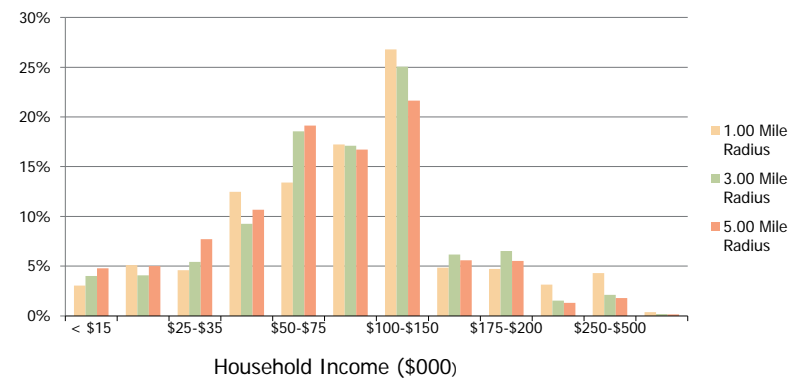
This report was produced using data from private and government sources deemed to be reliable and is herein provided without representation or warranty.

<b>Plantation Plaza</b> Jacksonville, FL	1.00 Mile Radius	3.00 Mile Radius	5.00 Mile Radius
---	------------------	------------------	------------------

**Population by Age Range**



**Household Income by Income Range**



	1.00 Mile Radius	3.00 Mile Radius	5.00 Mile Radius
<b>Population</b>			
Current Estimated Population	7,497	42,406	94,636
2010 Census Population	7,059	40,667	91,827
2000 Census Population	3,007	23,936	63,643
Historical Annual Growth 2000 to 2010	8.91%	5.44%	3.73%
Estimated Annual Growth 2010 to 2011	3.50%	2.42%	1.74%
Projected Annual Growth 2011 to 2016	6.05%	4.70%	3.39%
<b>Households</b>			
Current Estimated Households	2,594	15,176	35,635
2010 Census Households	2,440	14,568	34,622
2000 Census Households	1,024	8,162	23,175
Historical Annual Growth 2000 to 2010	9.1%	6.0%	4.1%
Estimated Annual Growth 2010 to 2011	3.6%	2.4%	1.7%
Projected Annual Growth 2011 to 2016	6.1%	4.6%	3.2%
Population per Household	2.9	2.8	2.6
<b>Ethnicity</b>			
White	89.2%	88.6%	85.4%
Black or African American	3.8%	4.4%	6.1%
Asian & Pacific Islander	3.3%	3.5%	4.6%
Other Races	3.7%	3.5%	4.0%
Hispanic or Latino Population	7.2%	6.1%	6.8%
Non Hispanic or Latino Population	92.8%	93.9%	93.2%

This report was produced using data from private and government sources deemed to be reliable and is herein provided without representation or warranty.