

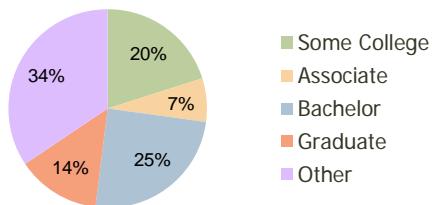
Cherry Grove Plaza Cincinnati, OH	1.00 Mile Radius	3.00 Mile Radius	5.00 Mile Radius
--------------------------------------	---------------------	---------------------	---------------------

Current Year Demographics

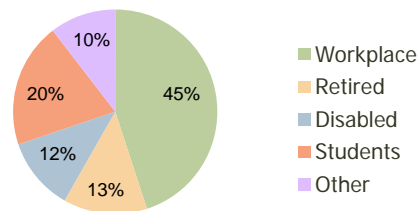
Current Population	9,869	53,409	115,805
Adjusted Total Pop (Carrier Route)	11,415	56,933	119,168
Total Daytime Pop	10,752	49,976	88,879
Workplace Pop	5,262	22,471	34,346
Average Household Income	\$72,597	\$82,941	\$84,907
Median Household Income	\$61,114	\$64,623	\$64,924
Total Housing Units	4,042	21,108	45,959
Median Home Value	\$141,531	\$149,806	\$150,630
Bachelors Degree	24.9%	24.8%	24.7%
Graduate Degree	12.2%	13.6%	13.2%
Total Consumer Spending/Capita	\$277	\$285	\$283

2016 Demographic Projections

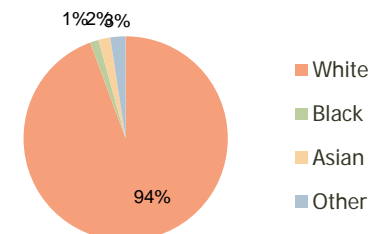
Projected Population	10,095	54,610	119,078
Projected 5 Year Pop Growth	0.5%	0.4%	0.6%
Projected Households	4,177	21,662	47,321
Projected 5 Year Household Growth	0.7%	0.5%	0.6%



Education (3-Mile)



Daytime Population (3-Mile)

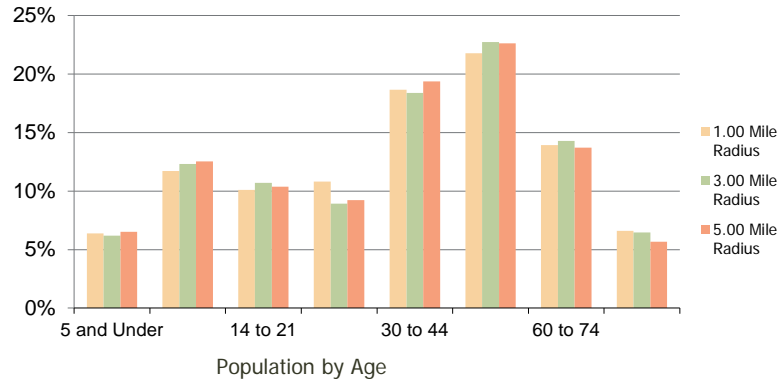


Ethnicity (3-Mile)

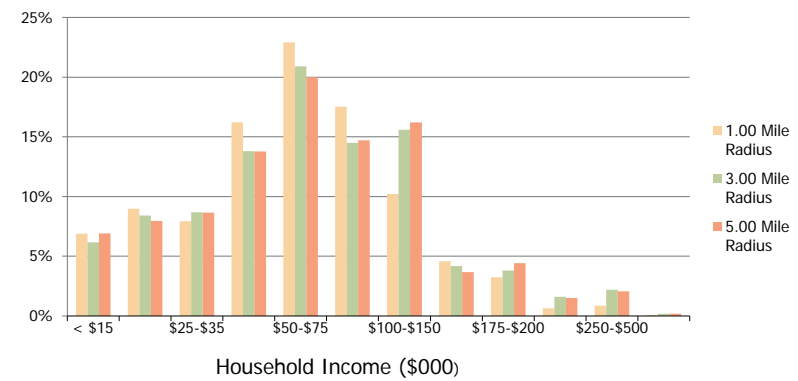
This report was produced using data from private and government sources deemed to be reliable and is herein provided without representation or warranty.

Cherry Grove Plaza Cincinnati, OH	1.00 Mile Radius	3.00 Mile Radius	5.00 Mile Radius
---	------------------	------------------	------------------

Population by Age Range



Household Income by Income Range



	1.00 Mile Radius	3.00 Mile Radius	5.00 Mile Radius
Population			
Current Estimated Population	9,869	53,409	115,805
2010 Census Population	9,770	53,443	115,749
2000 Census Population	10,260	52,192	109,980
Historical Annual Growth 2000 to 2010	-0.49%	0.24%	0.51%
Estimated Annual Growth 2010 to 2011	0.58%	-0.04%	0.03%
Projected Annual Growth 2011 to 2016	0.45%	0.45%	0.56%
Households			
Current Estimated Households	4,042	21,108	45,959
2010 Census Households	3,990	21,101	45,906
2000 Census Households	4,112	20,216	42,813
Historical Annual Growth 2000 to 2010	-0.3%	0.4%	0.7%
Estimated Annual Growth 2010 to 2011	0.7%	0.0%	0.1%
Projected Annual Growth 2011 to 2016	0.7%	0.5%	0.6%
Population per Household	2.4	2.5	2.5
Ethnicity			
White	93.5%	94.4%	94.3%
Black or African American	1.7%	1.3%	1.8%
Asian & Pacific Islander	2.0%	1.9%	1.6%
Other Races	2.8%	2.4%	2.3%
Hispanic or Latino Population	2.4%	1.9%	1.7%
Non Hispanic or Latino Population	97.6%	98.1%	98.3%

This report was produced using data from private and government sources deemed to be reliable and is herein provided without representation or warranty.