

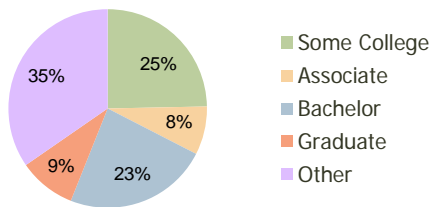
East Pointe Crossing Columbus, OH	1.00 Mile Radius	3.00 Mile Radius	5.00 Mile Radius
--------------------------------------	---------------------	---------------------	---------------------

Current Year Demographics

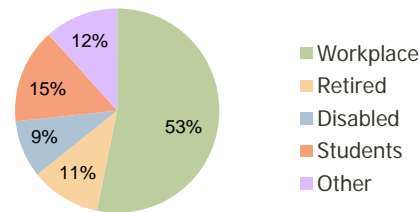
Current Population	9,920	73,002	174,453
Adjusted Total Pop (Carrier Route)	10,726	77,463	186,411
Total Daytime Pop	7,524	65,810	169,880
Workplace Pop	4,327	35,011	87,237
Average Household Income	\$57,512	\$70,067	\$67,062
Median Household Income	\$49,333	\$56,932	\$52,699
Total Housing Units	4,368	30,321	70,454
Median Home Value	\$126,325	\$136,381	\$132,367
Bachelors Degree	23.4%	23.5%	20.3%
Graduate Degree	7.6%	9.3%	9.4%
Total Consumer Spending/Capita	\$290	\$283	\$275

2016 Demographic Projections

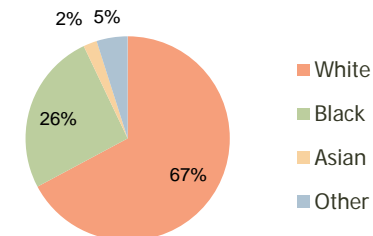
Projected Population	10,467	77,912	182,934
Projected 5 Year Pop Growth	1.1%	1.3%	1.0%
Projected Households	4,612	32,291	73,970
Projected 5 Year Household Growth	1.1%	1.3%	1.0%



Education (3-Mile)



Daytime Population (3-Mile)

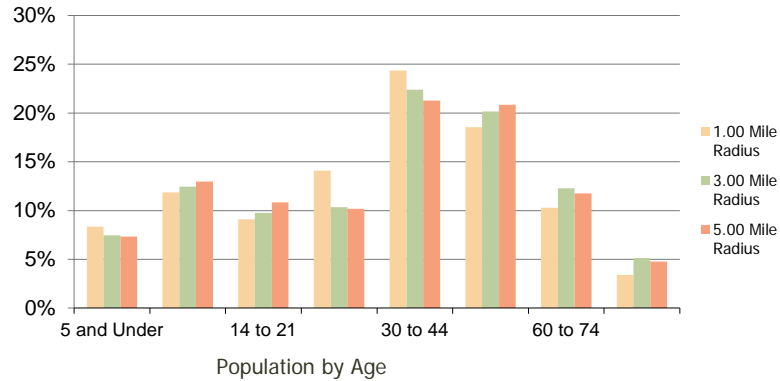


Ethnicity (3-Mile)

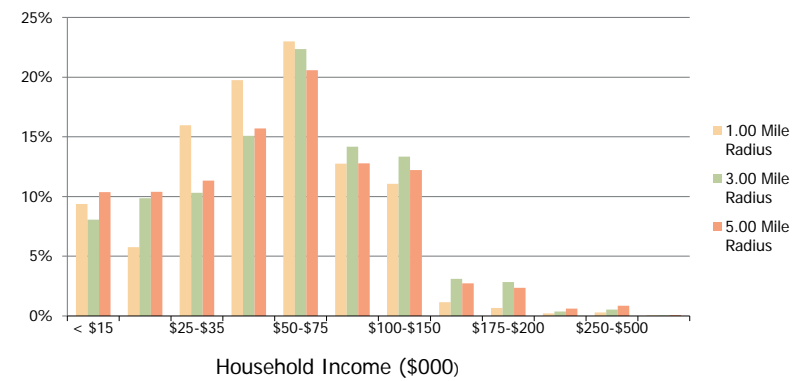
This report was produced using data from private and government sources deemed to be reliable and is herein provided without representation or warranty.

East Pointe Crossing Columbus, OH	1.00 Mile Radius	3.00 Mile Radius	5.00 Mile Radius
--------------------------------------	---------------------	---------------------	---------------------

Population by Age Range



Household Income by Income Range



	1.00 Mile Radius	3.00 Mile Radius	5.00 Mile Radius
Population			
Current Estimated Population	9,920	73,002	174,453
2010 Census Population	9,760	71,473	172,433
2000 Census Population	8,073	54,508	147,423
Historical Annual Growth 2000 to 2010	1.92%	2.75%	1.58%
Estimated Annual Growth 2010 to 2011	0.94%	1.22%	0.67%
Projected Annual Growth 2011 to 2016	1.08%	1.31%	0.95%
Households			
Current Estimated Households	4,368	30,321	70,454
2010 Census Households	4,296	29,714	69,573
2000 Census Households	3,521	22,770	59,998
Historical Annual Growth 2000 to 2010	2.0%	2.7%	1.5%
Estimated Annual Growth 2010 to 2011	1.0%	1.2%	0.7%
Projected Annual Growth 2011 to 2016	1.1%	1.3%	1.0%
Population per Household	2.3	2.4	2.5
Ethnicity			
White	60.9%	67.2%	62.4%
Black or African American	31.0%	25.7%	29.7%
Asian & Pacific Islander	2.7%	2.2%	2.1%
Other Races	5.4%	4.9%	5.8%
Hispanic or Latino Population	3.9%	3.7%	4.6%
Non Hispanic or Latino Population	96.1%	96.3%	95.4%

This report was produced using data from private and government sources deemed to be reliable and is herein provided without representation or warranty.