

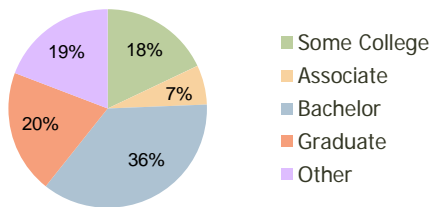
Northgate Plaza Columbus, OH	1.00 Mile Radius	3.00 Mile Radius	5.00 Mile Radius
---------------------------------	---------------------	---------------------	---------------------

Current Year Demographics

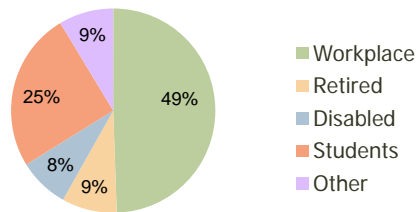
Current Population	7,508	54,784	148,496
Adjusted Total Pop (Carrier Route)	7,807	58,278	151,083
Total Daytime Pop	10,475	65,225	147,640
Workplace Pop	6,508	32,246	78,528
Average Household Income	\$109,323	\$115,220	\$87,856
Median Household Income	\$92,263	\$94,535	\$69,164
Total Housing Units	2,821	19,810	58,265
Median Home Value	\$216,924	\$215,541	\$182,455
Bachelors Degree	35.4%	36.4%	31.1%
Graduate Degree	18.0%	20.1%	15.7%
Total Consumer Spending/Capita	\$315	\$310	\$295

2016 Demographic Projections

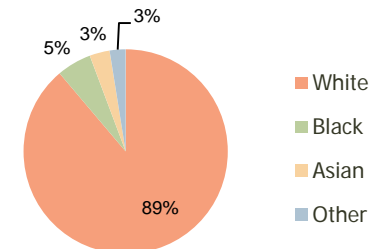
Projected Population	9,252	63,982	169,039
Projected 5 Year Pop Growth	4.3%	3.2%	2.6%
Projected Households	3,480	23,138	66,010
Projected 5 Year Household Growth	4.3%	3.2%	2.5%



Education (3-Mile)



Daytime Population (3-Mile)

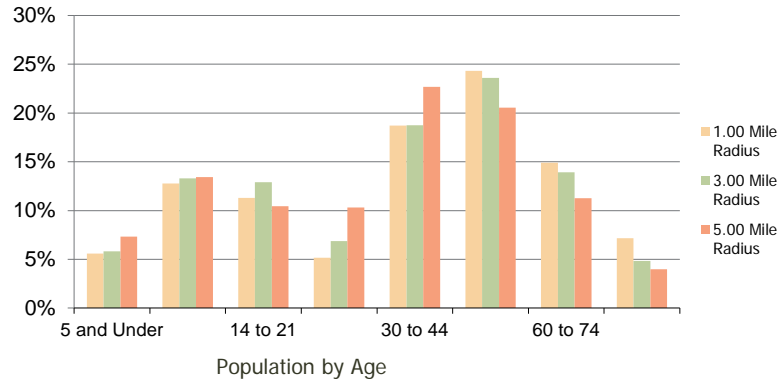


Ethnicity (3-Mile)

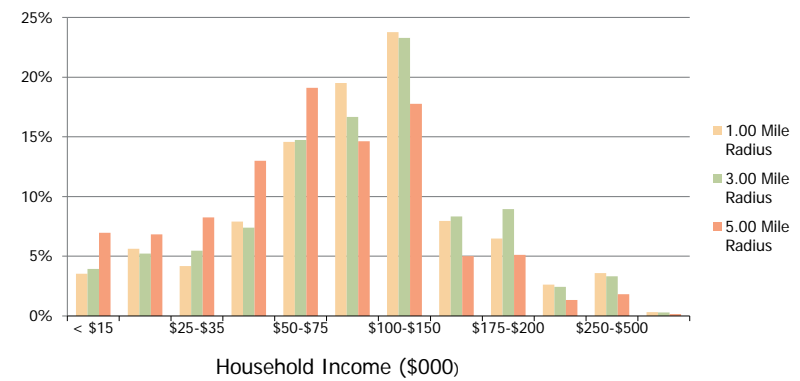
This report was produced using data from private and government sources deemed to be reliable and is herein provided without representation or warranty.

Northgate Plaza Columbus, OH	1.00 Mile Radius	3.00 Mile Radius	5.00 Mile Radius
--	------------------	------------------	------------------

Population by Age Range



Household Income by Income Range



	1.00 Mile Radius	3.00 Mile Radius	5.00 Mile Radius
Population			
Current Estimated Population	7,508	54,784	148,496
2010 Census Population	7,322	53,705	145,540
2000 Census Population	4,749	40,498	115,195
Historical Annual Growth 2000 to 2010	4.42%	2.86%	2.37%
Estimated Annual Growth 2010 to 2011	1.45%	1.14%	1.16%
Projected Annual Growth 2011 to 2016	4.27%	3.15%	2.63%
Households			
Current Estimated Households	2,821	19,810	58,265
2010 Census Households	2,753	19,418	57,108
2000 Census Households	1,632	14,106	46,138
Historical Annual Growth 2000 to 2010	5.4%	3.2%	2.2%
Estimated Annual Growth 2010 to 2011	1.4%	1.1%	1.2%
Projected Annual Growth 2011 to 2016	4.3%	3.2%	2.5%
Population per Household	2.6	2.7	2.5
Ethnicity			
White	88.4%	88.8%	77.9%
Black or African American	5.5%	5.5%	12.9%
Asian & Pacific Islander	3.8%	3.2%	4.7%
Other Races	2.2%	2.5%	4.5%
Hispanic or Latino Population	2.0%	1.9%	4.2%
Non Hispanic or Latino Population	98.0%	98.1%	95.8%

This report was produced using data from private and government sources deemed to be reliable and is herein provided without representation or warranty.