

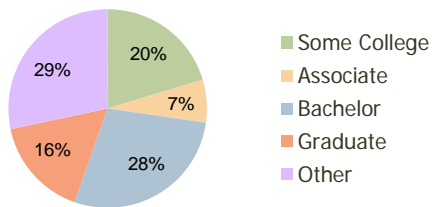
Beckett Commons West Chester, OH	1.00 Mile Radius	3.00 Mile Radius	5.00 Mile Radius
-------------------------------------	---------------------	---------------------	---------------------

Current Year Demographics

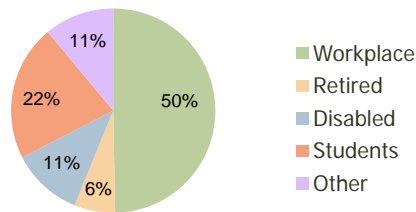
Current Population	7,835	45,781	137,224
Adjusted Total Pop (Carrier Route)	7,842	47,011	139,810
Total Daytime Pop	9,367	45,001	155,163
Workplace Pop	4,524	22,370	87,501
Average Household Income	\$92,757	\$100,670	\$81,764
Median Household Income	\$78,006	\$85,636	\$67,687
Total Housing Units	3,032	15,823	50,170
Median Home Value	\$183,853	\$184,540	\$158,308
Bachelors Degree	27.8%	28.1%	23.2%
Graduate Degree	22.1%	16.2%	12.4%
Total Consumer Spending/Capita	\$317	\$316	\$269

2016 Demographic Projections

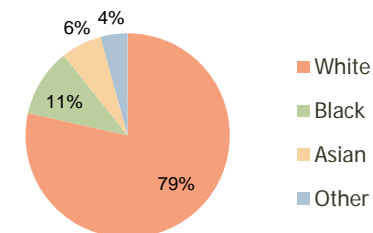
Projected Population	8,478	48,752	144,515
Projected 5 Year Pop Growth	1.6%	1.3%	1.0%
Projected Households	3,272	16,845	52,852
Projected 5 Year Household Growth	1.5%	1.3%	1.0%



Education (3-Mile)



Daytime Population (3-Mile)

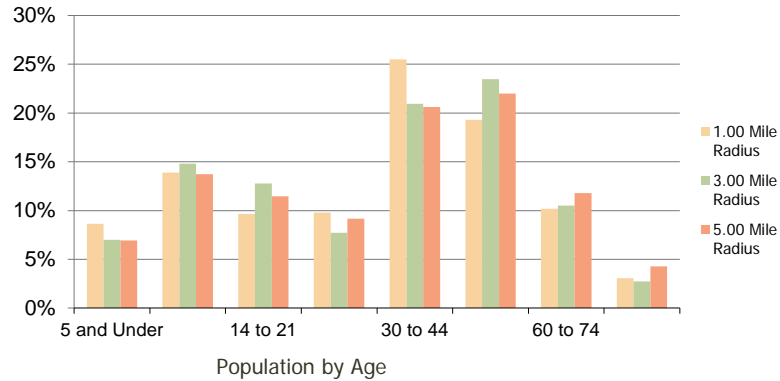


Ethnicity (3-Mile)

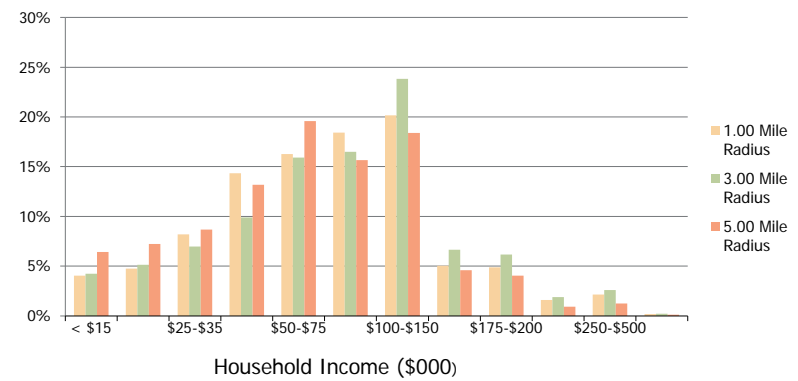
This report was produced using data from private and government sources deemed to be reliable and is herein provided without representation or warranty.

Beckett Commons West Chester, OH	1.00 Mile Radius	3.00 Mile Radius	5.00 Mile Radius
--	------------------	------------------	------------------

Population by Age Range



Household Income by Income Range



	1.00 Mile Radius	3.00 Mile Radius	5.00 Mile Radius
Population			
Current Estimated Population	7,835	45,781	137,224
2010 Census Population	7,705	45,315	136,228
2000 Census Population	3,104	35,184	115,157
Historical Annual Growth 2000 to 2010	9.52%	2.56%	1.69%
Estimated Annual Growth 2010 to 2011	0.96%	0.59%	0.42%
Projected Annual Growth 2011 to 2016	1.59%	1.27%	1.04%
Households			
Current Estimated Households	3,032	15,823	50,170
2010 Census Households	2,983	15,668	49,793
2000 Census Households	1,128	11,820	42,132
Historical Annual Growth 2000 to 2010	10.2%	2.9%	1.7%
Estimated Annual Growth 2010 to 2011	0.9%	0.6%	0.4%
Projected Annual Growth 2011 to 2016	1.5%	1.3%	1.0%
Population per Household	2.6	2.9	2.7
Ethnicity			
White	71.6%	78.5%	77.1%
Black or African American	12.7%	10.8%	13.0%
Asian & Pacific Islander	12.6%	6.4%	4.2%
Other Races	3.0%	4.3%	5.7%
Hispanic or Latino Population	3.8%	5.2%	6.3%
Non Hispanic or Latino Population	96.2%	94.8%	93.7%

This report was produced using data from private and government sources deemed to be reliable and is herein provided without representation or warranty.