

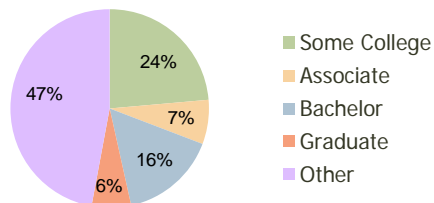
Lloyd King Center Arvada, CO	1.00 Mile Radius	3.00 Mile Radius	5.00 Mile Radius
---------------------------------	---------------------	---------------------	---------------------

Current Year Demographics

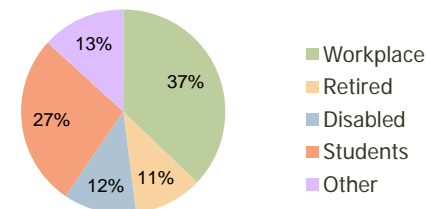
Current Population	12,719	123,639	330,284
Adjusted Total Pop (Carrier Route)	12,776	133,308	339,957
Total Daytime Pop	9,543	125,902	364,585
Workplace Pop	3,004	46,776	149,573
Average Household Income	\$62,121	\$58,380	\$62,233
Median Household Income	\$53,605	\$48,292	\$49,697
Total Housing Units	4,783	49,558	134,835
Median Home Value	\$179,339	\$176,664	\$184,464
Bachelors Degree	15.2%	15.7%	17.7%
Graduate Degree	3.7%	6.4%	8.6%
Total Consumer Spending/Capita	\$282	\$273	\$274

2016 Demographic Projections

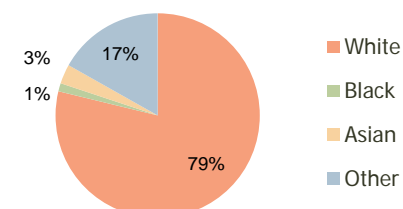
Projected Population	13,101	128,310	350,147
Projected 5 Year Pop Growth	0.6%	0.7%	1.2%
Projected Households	4,967	51,403	142,473
Projected 5 Year Household Growth	0.8%	0.7%	1.1%



Education (3-Mile)



Daytime Population (3-Mile)



Ethnicity (3-Mile)

This report was produced using data from private and government sources deemed to be reliable and is herein provided without representation or warranty.

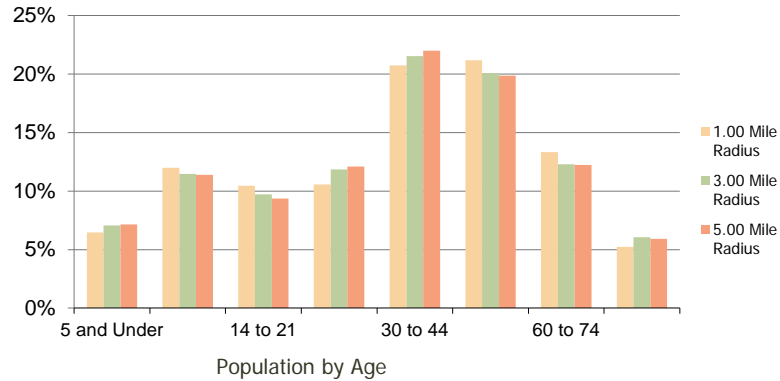
Lloyd King Center
Arvada, CO

1.00 Mile
Radius

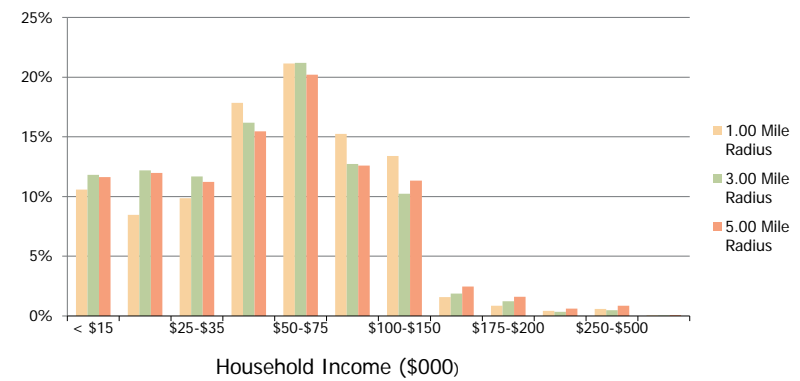
3.00 Mile
Radius

5.00 Mile
Radius

Population by Age Range



Household Income by Income Range



	1.00 Mile Radius	3.00 Mile Radius	5.00 Mile Radius
Population			
Current Estimated Population	12,719	123,639	330,284
2010 Census Population	12,560	123,356	323,603
2000 Census Population	12,307	127,068	330,307
Historical Annual Growth 2000 to 2010	0.20%	-0.30%	-0.20%
Estimated Annual Growth 2010 to 2011	0.72%	0.13%	1.17%
Projected Annual Growth 2011 to 2016	0.59%	0.74%	1.17%
Households			
Current Estimated Households	4,783	49,558	134,835
2010 Census Households	4,701	49,491	132,349
2000 Census Households	4,439	49,536	128,949
Historical Annual Growth 2000 to 2010	0.6%	0.0%	0.3%
Estimated Annual Growth 2010 to 2011	1.0%	0.1%	1.1%
Projected Annual Growth 2011 to 2016	0.8%	0.7%	1.1%
Population per Household	2.6	2.5	2.4
Ethnicity			
White	78.0%	78.8%	79.1%
Black or African American	1.4%	1.3%	1.5%
Asian & Pacific Islander	6.1%	3.1%	2.6%
Other Races	14.5%	16.8%	16.8%
Hispanic or Latino Population	30.4%	33.5%	32.9%
Non Hispanic or Latino Population	69.6%	66.5%	67.1%

This report was produced using data from private and government sources deemed to be reliable and is herein provided without representation or warranty.