

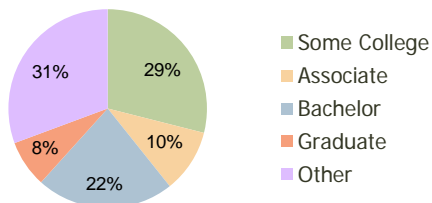
French Valley Village Center Winchester, CA	1.00 Mile Radius	3.00 Mile Radius	5.00 Mile Radius
--	---------------------	---------------------	---------------------

### Current Year Demographics

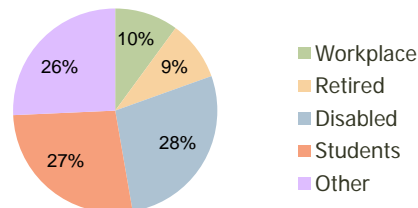
Current Population	8,881	46,836	137,684
Adjusted Total Pop (Carrier Route)	2,246	24,849	112,818
Total Daytime Pop	3,622	26,984	89,501
Workplace Pop	197	2,714	16,598
Average Household Income	\$94,478	\$95,372	\$91,092
Median Household Income	\$85,513	\$83,720	\$79,397
Total Housing Units	2,509	13,322	41,697
Median Home Value	\$211,735	\$223,717	\$226,854
Bachelors Degree	22.7%	22.4%	20.2%
Graduate Degree	7.4%	7.7%	8.8%
Total Consumer Spending/Capita	\$0	\$0	\$308

### 2016 Demographic Projections

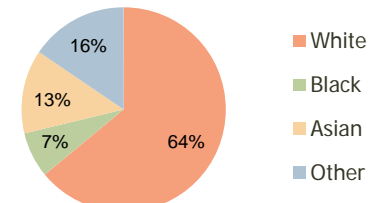
Projected Population	11,483	58,130	165,867
Projected 5 Year Pop Growth	5.3%	4.4%	3.8%
Projected Households	3,241	16,640	50,393
Projected 5 Year Household Growth	5.3%	4.5%	3.9%



Education (3-Mile)



Daytime Population (3-Mile)

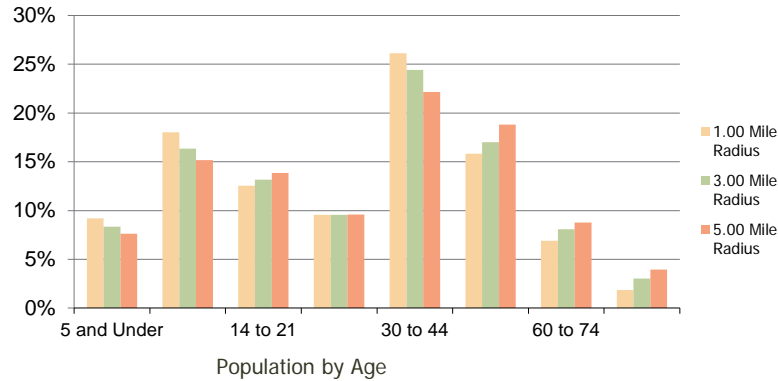


Ethnicity (3-Mile)

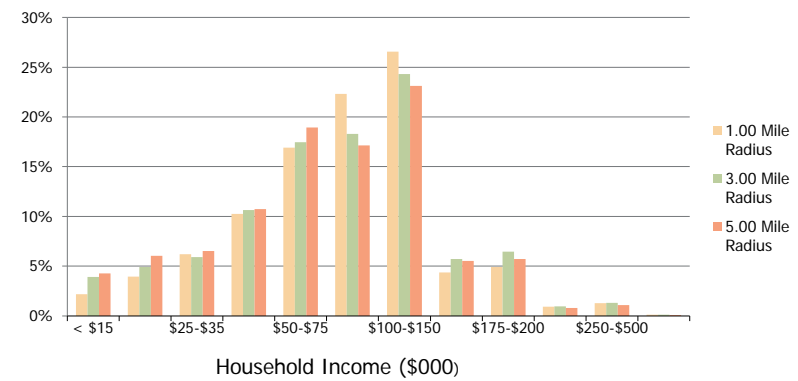
This report was produced using data from private and government sources deemed to be reliable and is herein provided without representation or warranty.

<b>French Valley Village Center</b> Winchester, CA	<b>1.00 Mile Radius</b>	<b>3.00 Mile Radius</b>	<b>5.00 Mile Radius</b>
---	-------------------------	-------------------------	-------------------------

**Population by Age Range**



**Household Income by Income Range**



	1.00 Mile Radius	3.00 Mile Radius	5.00 Mile Radius
<b>Population</b>			
Current Estimated Population	8,881	46,836	137,684
2010 Census Population	8,090	43,744	131,376
2000 Census Population	1,002	7,179	52,336
Historical Annual Growth 2000 to 2010	23.23%	19.81%	9.64%
Estimated Annual Growth 2010 to 2011	5.47%	3.98%	2.72%
Projected Annual Growth 2011 to 2016	5.27%	4.42%	3.79%
<b>Households</b>			
Current Estimated Households	2,509	13,322	41,697
2010 Census Households	2,289	12,408	39,718
2000 Census Households	305	2,496	16,566
Historical Annual Growth 2000 to 2010	22.3%	17.4%	9.1%
Estimated Annual Growth 2010 to 2011	5.4%	4.1%	2.8%
Projected Annual Growth 2011 to 2016	5.3%	4.5%	3.9%
Population per Household	3.5	3.4	3.3
<b>Ethnicity</b>			
White	63.6%	64.0%	66.9%
Black or African American	6.7%	7.2%	6.2%
Asian & Pacific Islander	13.2%	13.3%	10.9%
Other Races	16.5%	15.5%	16.0%
Hispanic or Latino Population	26.6%	25.6%	26.4%
Non Hispanic or Latino Population	73.4%	74.4%	73.6%

This report was produced using data from private and government sources deemed to be reliable and is herein provided without representation or warranty.