

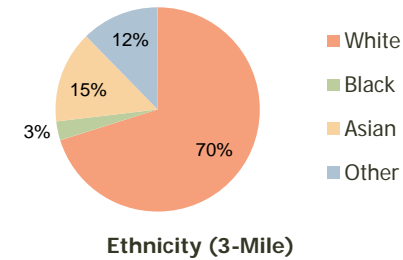
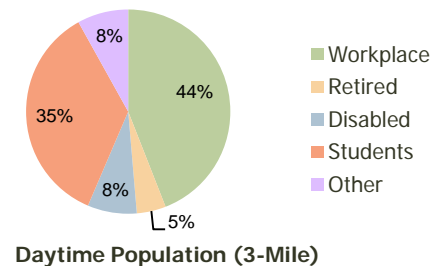
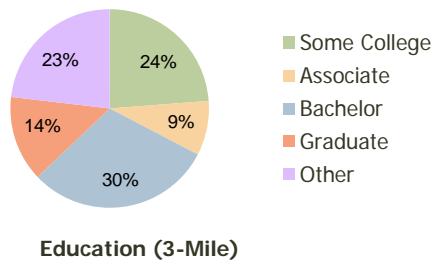
Westridge Village Valencia, CA	1.00 Mile Radius	3.00 Mile Radius	5.00 Mile Radius
-----------------------------------	---------------------	---------------------	---------------------

### Current Year Demographics

Current Population	6,727	77,888	154,174
Adjusted Total Pop (Carrier Route)	9,833	77,696	156,179
Total Daytime Pop	29,844	141,605	201,085
Workplace Pop	7,035	62,357	81,284
Average Household Income	\$129,264	\$111,447	\$108,722
Median Household Income	\$103,953	\$93,747	\$92,510
Total Housing Units	2,596	27,505	50,028
Median Home Value	\$550,508	\$462,401	\$448,671
Bachelors Degree	33.2%	30.2%	25.8%
Graduate Degree	19.8%	13.9%	11.5%
Total Consumer Spending/Capita	\$341	\$334	\$331

### 2016 Demographic Projections

Projected Population	6,422	80,993	160,070
Projected 5 Year Pop Growth	-0.9%	0.8%	0.8%
Projected Households	2,477	28,643	51,999
Projected 5 Year Household Growth	-0.9%	0.8%	0.8%



This report was produced using data from private and government sources deemed to be reliable and is herein provided without representation or warranty.

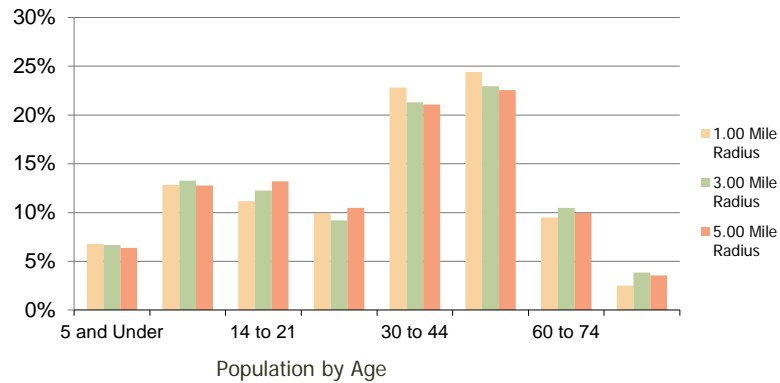
**Westridge Village**  
Valencia, CA

1.00 Mile  
Radius

3.00 Mile  
Radius

5.00 Mile  
Radius

**Population by Age Range**



**Household Income by Income Range**



	1.00 Mile Radius	3.00 Mile Radius	5.00 Mile Radius	
<b>Population</b>	Current Estimated Population	6,727	77,888	154,174
	2010 Census Population	7,083	76,710	152,096
	2000 Census Population	3,705	51,443	111,728
	Historical Annual Growth 2000 to 2010	6.70%	4.08%	3.13%
	Estimated Annual Growth 2010 to 2011	-2.91%	0.88%	0.78%
	Projected Annual Growth 2011 to 2016	-0.92%	0.78%	0.75%
<b>Households</b>	Current Estimated Households	2,596	27,505	50,028
	2010 Census Households	2,737	27,119	49,323
	2000 Census Households	1,502	18,464	36,361
	Historical Annual Growth 2000 to 2010	6.2%	3.9%	3.1%
	Estimated Annual Growth 2010 to 2011	-3.0%	0.8%	0.8%
	Projected Annual Growth 2011 to 2016	-0.9%	0.8%	0.8%
Population per Household	2.6	2.8	2.9	
<b>Ethnicity</b>	White	69.0%	70.1%	68.8%
	Black or African American	3.3%	3.0%	3.9%
	Asian & Pacific Islander	18.8%	14.5%	11.5%
	Other Races	9.0%	12.3%	15.8%
	Hispanic or Latino Population	14.5%	20.9%	26.2%
Non Hispanic or Latino Population	85.5%	79.1%	73.8%	

This report was produced using data from private and government sources deemed to be reliable and is herein provided without representation or warranty.