

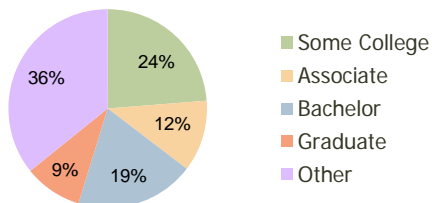
East Towne Center Clermont, FL	1.00 Mile Radius	3.00 Mile Radius	5.00 Mile Radius
-----------------------------------	---------------------	---------------------	---------------------

### Current Year Demographics

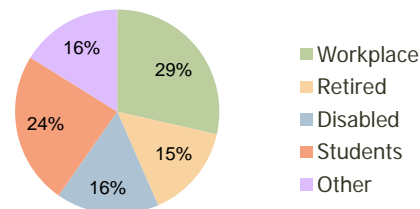
Current Population	2,623	21,241	65,753
Adjusted Total Pop (Carrier Route)	2,635	21,491	66,508
Total Daytime Pop	2,751	14,876	46,333
Workplace Pop	694	4,250	12,632
Average Household Income	\$80,856	\$81,200	\$76,689
Median Household Income	\$68,870	\$65,045	\$61,027
Total Housing Units	867	7,509	23,964
Median Home Value	\$143,852	\$153,603	\$151,550
Bachelors Degree	18.5%	19.4%	19.8%
Graduate Degree	9.9%	9.5%	8.9%
Total Consumer Spending/Capita	\$277	\$281	\$273

### 2016 Demographic Projections

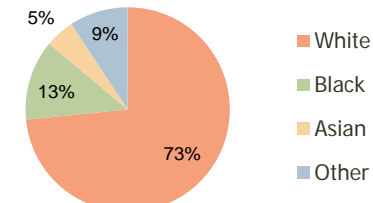
Projected Population	3,311	25,611	80,546
Projected 5 Year Pop Growth	4.8%	3.8%	4.1%
Projected Households	1,093	9,045	29,415
Projected 5 Year Household Growth	4.8%	3.8%	4.2%



Education (3-Mile)



Daytime Population (3-Mile)

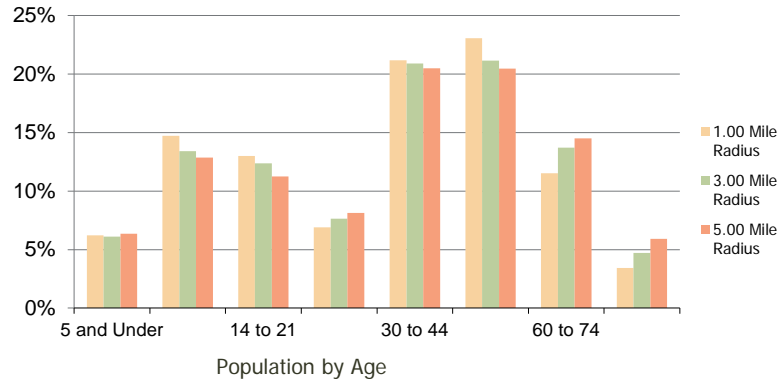


Ethnicity (3-Mile)

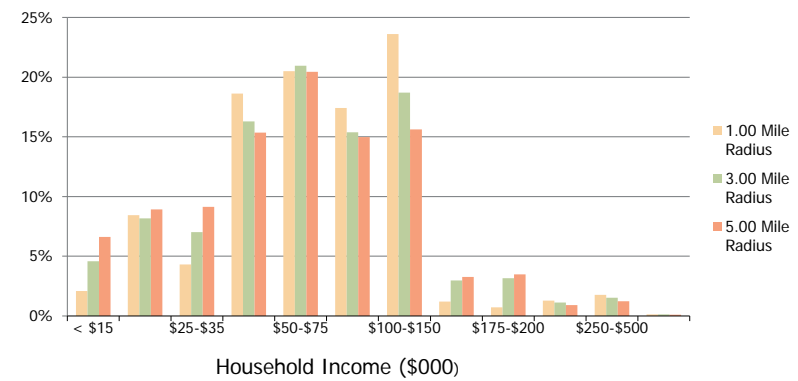
This report was produced using data from private and government sources deemed to be reliable and is herein provided without representation or warranty.

<b>East Towne Center</b> Clermont, FL	<b>1.00 Mile Radius</b>	<b>3.00 Mile Radius</b>	<b>5.00 Mile Radius</b>
--	-------------------------	-------------------------	-------------------------

**Population by Age Range**



**Household Income by Income Range**



	1.00 Mile Radius	3.00 Mile Radius	5.00 Mile Radius
<b>Population</b>			
Current Estimated Population	2,623	21,241	65,753
2010 Census Population	2,488	20,641	63,257
2000 Census Population	1,410	7,709	26,458
Historical Annual Growth 2000 to 2010	5.84%	10.35%	9.11%
Estimated Annual Growth 2010 to 2011	3.07%	1.65%	2.24%
Projected Annual Growth 2011 to 2016	4.77%	3.81%	4.14%
<b>Households</b>			
Current Estimated Households	867	7,509	23,964
2010 Census Households	822	7,300	23,033
2000 Census Households	480	2,697	10,032
Historical Annual Growth 2000 to 2010	5.5%	10.5%	8.7%
Estimated Annual Growth 2010 to 2011	3.1%	1.6%	2.3%
Projected Annual Growth 2011 to 2016	4.8%	3.8%	4.2%
Population per Household	3.0	2.8	2.7
<b>Ethnicity</b>			
White	79.2%	73.4%	74.8%
Black or African American	9.8%	12.7%	12.6%
Asian & Pacific Islander	3.3%	4.6%	3.9%
Other Races	7.7%	9.3%	8.6%
Hispanic or Latino Population	17.2%	18.1%	18.0%
Non Hispanic or Latino Population	82.8%	81.9%	82.0%

This report was produced using data from private and government sources deemed to be reliable and is herein provided without representation or warranty.