

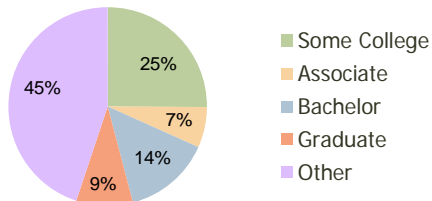
Phenix Crossing Phenix City, AL	1.00 Mile Radius	3.00 Mile Radius	5.00 Mile Radius
------------------------------------	---------------------	---------------------	---------------------

Current Year Demographics

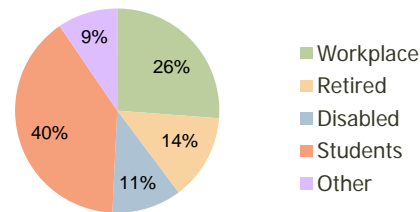
Current Population	3,218	26,927	89,321
Adjusted Total Pop (Carrier Route)	3,543	29,392	98,233
Total Daytime Pop	1,412	27,594	120,175
Workplace Pop	366	7,229	59,119
Average Household Income	\$81,969	\$70,271	\$57,775
Median Household Income	\$71,039	\$49,027	\$41,755
Total Housing Units	1,254	11,157	36,438
Median Home Value	\$162,978	\$126,815	\$112,415
Bachelors Degree	13.2%	14.2%	13.1%
Graduate Degree	10.6%	9.2%	7.5%
Total Consumer Spending/Capita	\$264	\$252	\$240

2016 Demographic Projections

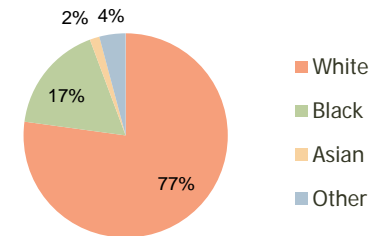
Projected Population	3,330	26,802	90,537
Projected 5 Year Pop Growth	0.7%	-0.1%	0.3%
Projected Households	1,295	11,081	36,817
Projected 5 Year Household Growth	0.7%	-0.1%	0.2%



Education (3-Mile)



Daytime Population (3-Mile)

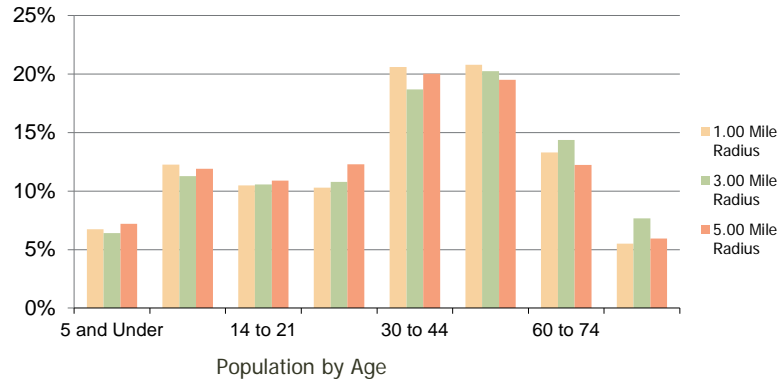


Ethnicity (3-Mile)

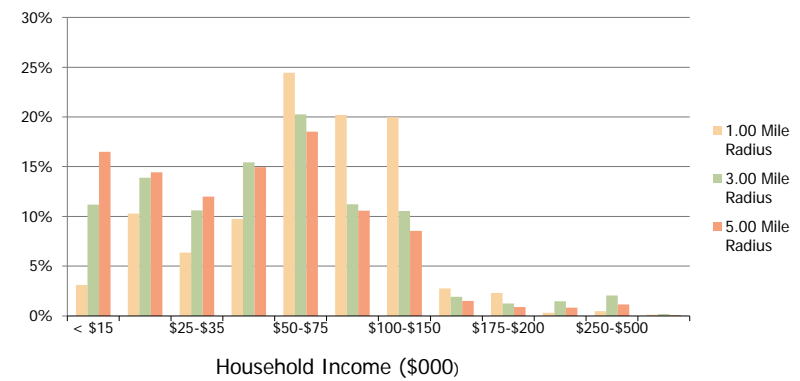
This report was produced using data from private and government sources deemed to be reliable and is herein provided without representation or warranty.

Phenix Crossing Phenix City, AL	1.00 Mile Radius	3.00 Mile Radius	5.00 Mile Radius
------------------------------------	---------------------	---------------------	---------------------

Population by Age Range



Household Income by Income Range



Population	Current Estimated Population	3,218	26,927	89,321
	2010 Census Population	3,137	26,848	89,068
	2000 Census Population	2,259	23,506	78,435
	Historical Annual Growth 2000 to 2010	3.34%	1.34%	1.28%
	Estimated Annual Growth 2010 to 2011	1.47%	0.17%	0.16%
Households	Projected Annual Growth 2011 to 2016	0.69%	-0.09%	0.27%
	Current Estimated Households	1,254	11,157	36,438
	2010 Census Households	1,223	11,131	36,392
	2000 Census Households	863	9,649	32,310
	Historical Annual Growth 2000 to 2010	3.5%	1.4%	1.2%
Ethnicity	Estimated Annual Growth 2010 to 2011	1.4%	0.1%	0.1%
	Projected Annual Growth 2011 to 2016	0.7%	-0.1%	0.2%
	Population per Household	2.6	2.4	2.4
	White	84.5%	77.2%	66.5%
	Black or African American	10.6%	17.2%	27.1%
	Asian & Pacific Islander	1.6%	1.5%	1.5%
	Other Races	3.3%	4.2%	4.9%
Hispanic or Latino Population	3.0%	3.6%	4.9%	
Non Hispanic or Latino Population	97.0%	96.4%	95.1%	

This report was produced using data from private and government sources deemed to be reliable and is herein provided without representation or warranty.