

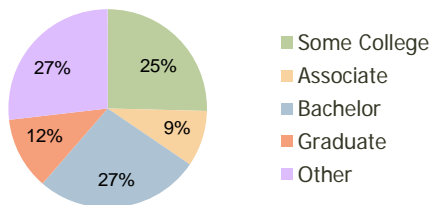
Shops at Arizona Anthem, AZ	1.00 Mile Radius	3.00 Mile Radius	5.00 Mile Radius
--------------------------------	---------------------	---------------------	---------------------

Current Year Demographics

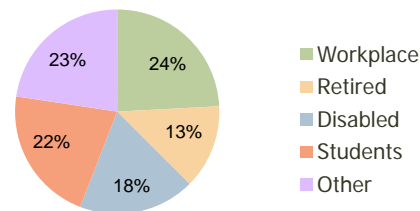
Current Population	8,297	28,403	43,676
Adjusted Total Pop (Carrier Route)	9,584	29,828	43,543
Total Daytime Pop	6,759	17,957	30,948
Workplace Pop	2,213	4,339	6,449
Average Household Income	\$94,272	\$101,185	\$102,025
Median Household Income	\$77,458	\$82,994	\$84,588
Total Housing Units	2,790	9,495	15,043
Median Home Value	\$200,894	\$199,272	\$201,488
Bachelors Degree	27.4%	26.9%	25.5%
Graduate Degree	12.5%	11.8%	10.5%
Total Consumer Spending/Capita	\$0	\$0	\$0

2016 Demographic Projections

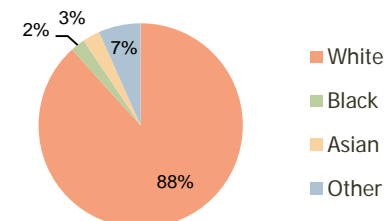
Projected Population	8,883	29,949	46,365
Projected 5 Year Pop Growth	1.4%	1.1%	1.2%
Projected Households	2,984	10,025	16,030
Projected 5 Year Household Growth	1.4%	1.1%	1.3%



Education (3-Mile)



Daytime Population (3-Mile)



Ethnicity (3-Mile)

This report was produced using data from private and government sources deemed to be reliable and is herein provided without representation or warranty.

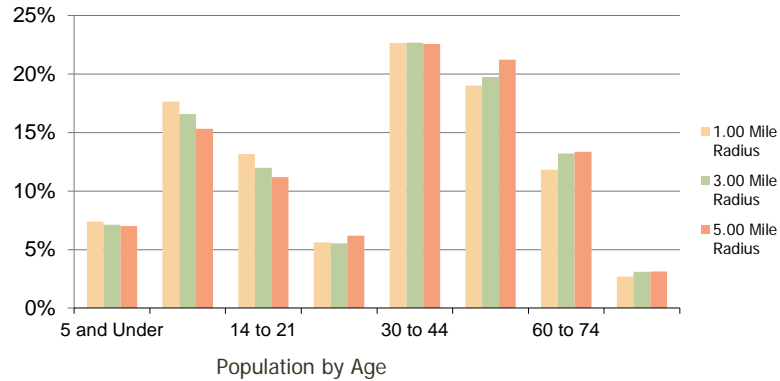
Shops at Arizona Anthem, AZ

1.00 Mile
Radius

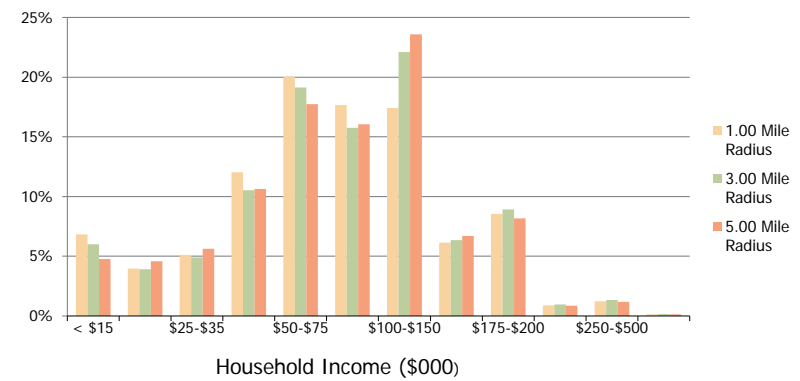
3.00 Mile
Radius

5.00 Mile
Radius

Population by Age Range



Household Income by Income Range



	1.00 Mile Radius	3.00 Mile Radius	5.00 Mile Radius	
Population	Current Estimated Population	8,297	28,403	43,676
	2010 Census Population	8,120	28,259	43,229
	2000 Census Population	246	3,132	8,706
	Historical Annual Growth 2000 to 2010	41.88%	24.60%	17.38%
	Estimated Annual Growth 2010 to 2011	1.24%	0.29%	0.59%
	Projected Annual Growth 2011 to 2016	1.37%	1.07%	1.20%
Households	Current Estimated Households	2,790	9,495	15,043
	2010 Census Households	2,731	9,432	14,853
	2000 Census Households	89	934	2,901
	Historical Annual Growth 2000 to 2010	40.8%	26.0%	17.7%
	Estimated Annual Growth 2010 to 2011	1.2%	0.4%	0.7%
	Projected Annual Growth 2011 to 2016	1.4%	1.1%	1.3%
Population per Household	3.0	2.9	2.8	
Ethnicity	White	89.0%	88.3%	89.0%
	Black or African American	2.1%	2.3%	2.1%
	Asian & Pacific Islander	2.9%	2.8%	2.4%
	Other Races	5.9%	6.7%	6.4%
	Hispanic or Latino Population	9.7%	10.1%	9.6%
Non Hispanic or Latino Population	90.3%	89.9%	90.4%	

This report was produced using data from private and government sources deemed to be reliable and is herein provided without representation or warranty.