

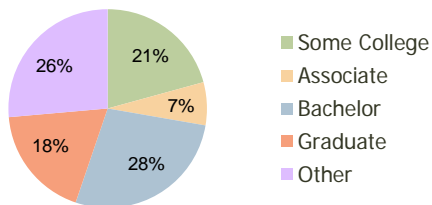
Paseo Del Sol Santa Barbara, CA	1.00 Mile Radius	3.00 Mile Radius	5.00 Mile Radius
------------------------------------	---------------------	---------------------	---------------------

Current Year Demographics

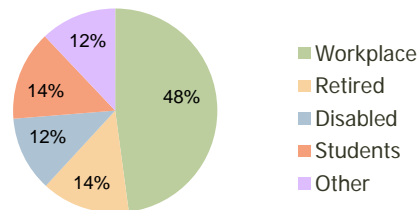
Current Population	13,226	79,698	131,732
Adjusted Total Pop (Carrier Route)	16,022	82,962	142,484
Total Daytime Pop	18,329	84,606	175,495
Workplace Pop	10,159	40,498	74,971
Average Household Income	\$93,025	\$98,804	\$96,756
Median Household Income	\$67,313	\$68,828	\$69,132
Total Housing Units	5,763	32,696	51,174
Median Home Value	\$737,357	\$757,755	\$750,945
Bachelors Degree	22.9%	27.5%	25.2%
Graduate Degree	18.3%	18.4%	17.7%
Total Consumer Spending/Capita	\$306	\$303	\$305

2016 Demographic Projections

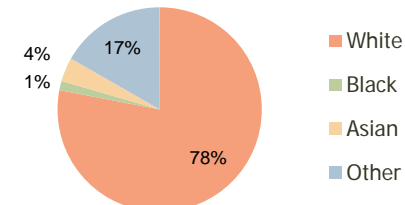
Projected Population	13,673	85,086	140,174
Projected 5 Year Pop Growth	0.7%	1.3%	1.3%
Projected Households	5,969	35,049	54,459
Projected 5 Year Household Growth	0.7%	1.4%	1.3%



Education (3-Mile)



Daytime Population (3-Mile)

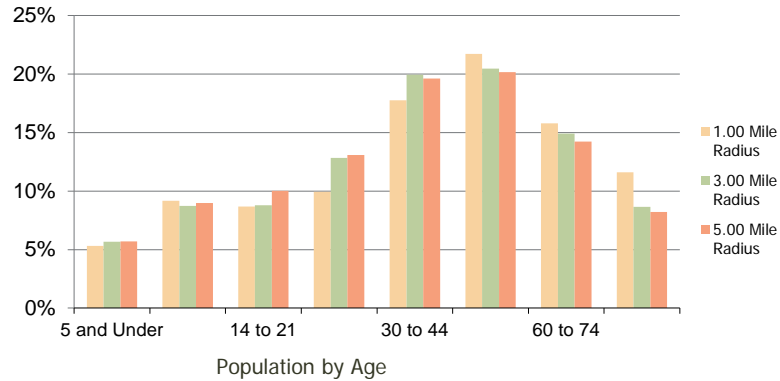


Ethnicity (3-Mile)

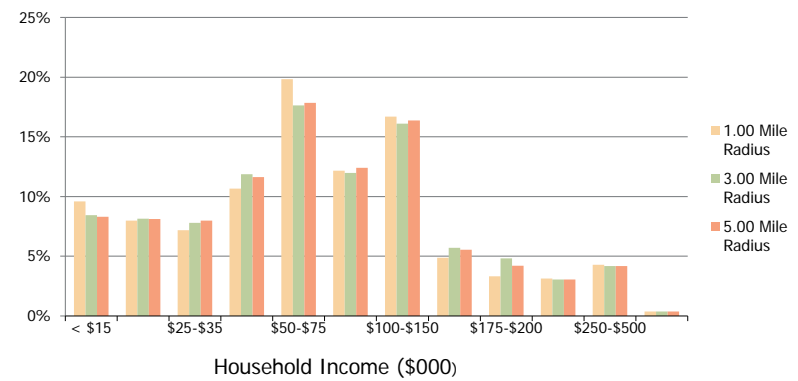
This report was produced using data from private and government sources deemed to be reliable and is herein provided without representation or warranty.

Paseo Del Sol Santa Barbara, CA	1.00 Mile Radius	3.00 Mile Radius	5.00 Mile Radius
------------------------------------	---------------------	---------------------	---------------------

Population by Age Range



Household Income by Income Range



	1.00 Mile Radius	3.00 Mile Radius	5.00 Mile Radius
Population			
Current Estimated Population	13,226	79,698	131,732
2010 Census Population	13,590	78,955	130,922
2000 Census Population	14,054	78,575	131,506
Historical Annual Growth 2000 to 2010	-0.34%	0.05%	-0.04%
Estimated Annual Growth 2010 to 2011	-1.54%	0.54%	0.35%
Projected Annual Growth 2011 to 2016	0.67%	1.32%	1.25%
Households			
Current Estimated Households	5,763	32,696	51,174
2010 Census Households	5,919	32,304	50,830
2000 Census Households	6,140	32,133	50,631
Historical Annual Growth 2000 to 2010	-0.4%	0.1%	0.0%
Estimated Annual Growth 2010 to 2011	-1.5%	0.7%	0.4%
Projected Annual Growth 2011 to 2016	0.7%	1.4%	1.3%
Population per Household	2.2	2.4	2.5
Ethnicity			
White	82.0%	78.0%	76.0%
Black or African American	1.5%	1.5%	1.5%
Asian & Pacific Islander	4.7%	3.8%	4.1%
Other Races	11.8%	16.7%	18.4%
Hispanic or Latino Population	20.4%	30.3%	34.3%
Non Hispanic or Latino Population	79.6%	69.7%	65.7%

This report was produced using data from private and government sources deemed to be reliable and is herein provided without representation or warranty.