

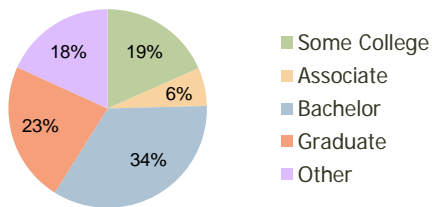
<b>Bellevue Square</b> Englewood, CO	1.00 Mile Radius	3.00 Mile Radius	5.00 Mile Radius
-----------------------------------------	---------------------	---------------------	---------------------

### Current Year Demographics

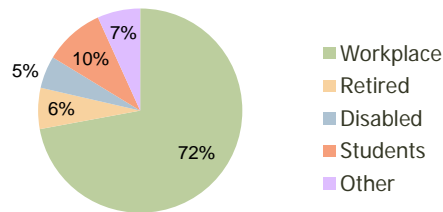
Current Population	9,526	82,680	266,946
Adjusted Total Pop (Carrier Route)	10,922	85,017	275,084
Total Daytime Pop	38,183	149,785	355,290
Workplace Pop	29,024	107,978	216,454
Average Household Income	\$116,196	\$100,001	\$89,380
Median Household Income	\$78,597	\$67,459	\$61,517
Total Housing Units	4,842	38,300	118,254
Median Home Value	\$341,008	\$279,321	\$235,939
Bachelors Degree	36.7%	34.3%	31.5%
Graduate Degree	25.7%	22.9%	18.3%
Total Consumer Spending/Capita	\$320	\$304	\$303

### 2016 Demographic Projections

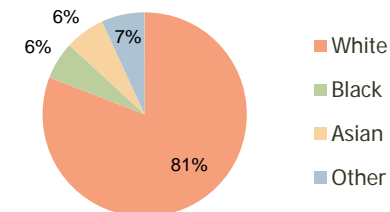
Projected Population	11,102	90,161	289,404
Projected 5 Year Pop Growth	3.1%	1.7%	1.6%
Projected Households	5,744	42,264	128,712
Projected 5 Year Household Growth	3.5%	2.0%	1.7%



Education (3-Mile)



Daytime Population (3-Mile)



Ethnicity (3-Mile)

This report was produced using data from private and government sources deemed to be reliable and is herein provided without representation or warranty.

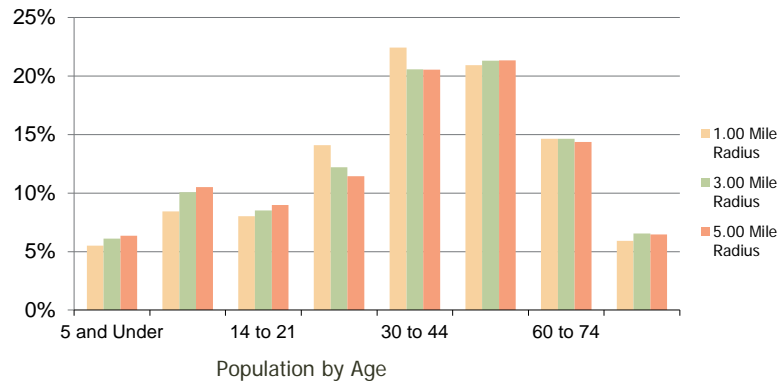
**Bellevue Square**  
Englewood, CO

1.00 Mile  
Radius

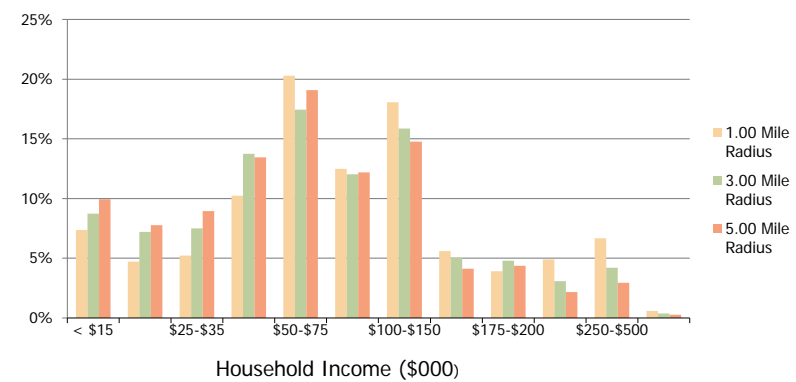
3.00 Mile  
Radius

5.00 Mile  
Radius

**Population by Age Range**



**Household Income by Income Range**



	1.00 Mile Radius	3.00 Mile Radius	5.00 Mile Radius
<b>Population</b>			
Current Estimated Population	9,526	82,680	266,946
2010 Census Population	8,924	80,423	262,898
2000 Census Population	6,242	75,444	243,338
Historical Annual Growth 2000 to 2010	3.64%	0.64%	0.78%
Estimated Annual Growth 2010 to 2011	3.80%	1.59%	0.88%
Projected Annual Growth 2011 to 2016	3.11%	1.75%	1.63%
<b>Households</b>			
Current Estimated Households	4,842	38,300	118,254
2010 Census Households	4,449	37,003	116,240
2000 Census Households	2,727	33,283	105,826
Historical Annual Growth 2000 to 2010	5.0%	1.1%	0.9%
Estimated Annual Growth 2010 to 2011	5.0%	2.0%	1.0%
Projected Annual Growth 2011 to 2016	3.5%	2.0%	1.7%
Population per Household	2.0	2.1	2.2
<b>Ethnicity</b>			
White	83.1%	80.9%	78.2%
Black or African American	4.2%	5.9%	8.4%
Asian & Pacific Islander	7.6%	6.3%	5.2%
Other Races	5.1%	6.8%	8.2%
Hispanic or Latino Population	7.6%	10.2%	11.6%
Non Hispanic or Latino Population	92.4%	89.8%	88.4%

This report was produced using data from private and government sources deemed to be reliable and is herein provided without representation or warranty.