

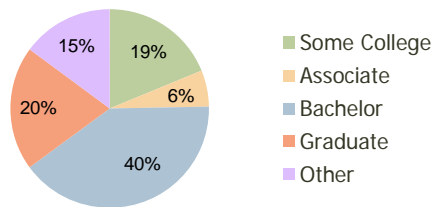
| Sterling Ridge Village Center<br>The Woodlands, TX | 1.00 Mile<br>Radius | 3.00 Mile<br>Radius | 5.00 Mile<br>Radius |
|--|---------------------|---------------------|---------------------|
|--|---------------------|---------------------|---------------------|

### Current Year Demographics

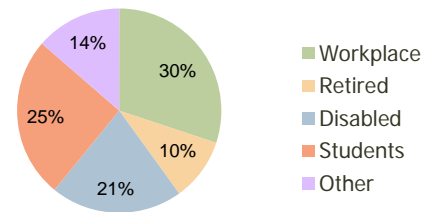
|                                    |           |           |           |
|------------------------------------|-----------|-----------|-----------|
| Current Population                 | 6,827     | 62,456    | 125,592   |
| Adjusted Total Pop (Carrier Route) | 7,698     | 68,380    | 130,774   |
| Total Daytime Pop                  | 5,814     | 50,085    | 111,658   |
| Workplace Pop                      | 1,966     | 15,072    | 45,025    |
| Average Household Income           | \$177,423 | \$143,321 | \$132,144 |
| Median Household Income            | \$139,984 | \$114,983 | \$103,778 |
| Total Housing Units                | 2,357     | 22,441    | 46,100    |
| Median Home Value                  | \$331,814 | \$242,384 | \$217,308 |
| Bachelors Degree                   | 42.0%     | 40.2%     | 35.8%     |
| Graduate Degree                    | 24.0%     | 20.2%     | 16.9%     |
| Total Consumer Spending/Capita     | \$313     | \$315     | \$303     |

### 2016 Demographic Projections

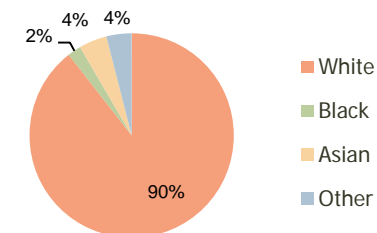
|                                   |       |        |         |
|-----------------------------------|-------|--------|---------|
| Projected Population              | 8,084 | 75,410 | 159,664 |
| Projected 5 Year Pop Growth       | 3.4%  | 3.8%   | 4.9%    |
| Projected Households              | 2,793 | 27,375 | 58,842  |
| Projected 5 Year Household Growth | 3.5%  | 4.1%   | 5.0%    |



Education (3-Mile)



Daytime Population (3-Mile)



Ethnicity (3-Mile)

This report was produced using data from private and government sources deemed to be reliable and is herein provided without representation or warranty.

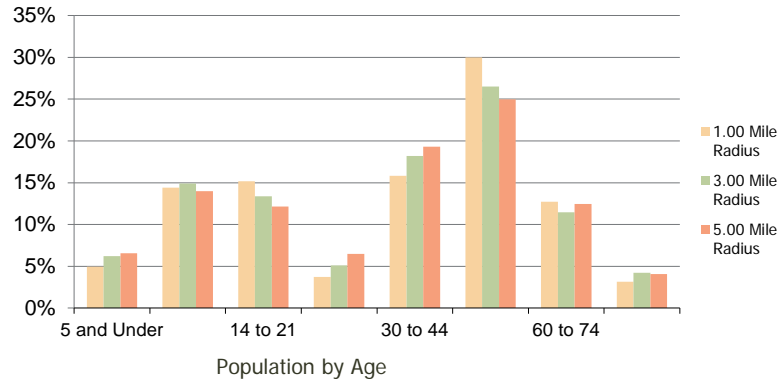
**Sterling Ridge Village Center**  
The Woodlands, TX

1.00 Mile  
Radius

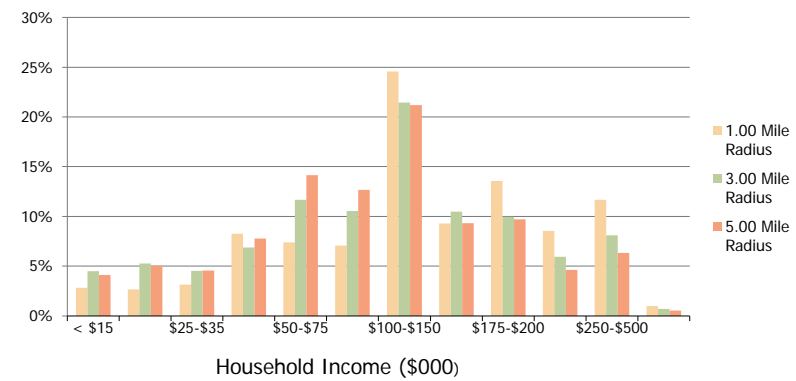
3.00 Mile  
Radius

5.00 Mile  
Radius

**Population by Age Range**



**Household Income by Income Range**



|                                   | 1.00 Mile Radius                      | 3.00 Mile Radius | 5.00 Mile Radius |         |
|-----------------------------------|---------------------------------------|------------------|------------------|---------|
| <b>Population</b>                 | Current Estimated Population          | 6,827            | 62,456           | 125,592 |
|                                   | 2010 Census Population                | 6,531            | 58,776           | 115,348 |
|                                   | 2000 Census Population                | 4,332            | 41,624           | 70,804  |
|                                   | Historical Annual Growth 2000 to 2010 | 4.19%            | 3.51%            | 5.00%   |
|                                   | Estimated Annual Growth 2010 to 2011  | 2.56%            | 3.53%            | 4.98%   |
|                                   | Projected Annual Growth 2011 to 2016  | 3.44%            | 3.84%            | 4.92%   |
| <b>Households</b>                 | Current Estimated Households          | 2,357            | 22,441           | 46,100  |
|                                   | 2010 Census Households                | 2,252            | 20,950           | 42,188  |
|                                   | 2000 Census Households                | 1,420            | 14,045           | 24,065  |
|                                   | Historical Annual Growth 2000 to 2010 | 4.7%             | 4.1%             | 5.8%    |
|                                   | Estimated Annual Growth 2010 to 2011  | 2.6%             | 4.0%             | 5.2%    |
|                                   | Projected Annual Growth 2011 to 2016  | 3.5%             | 4.1%             | 5.0%    |
| Population per Household          | 2.9                                   | 2.8              | 2.7              |         |
| <b>Ethnicity</b>                  | White                                 | 89.9%            | 89.5%            | 88.2%   |
|                                   | Black or African American             | 1.8%             | 2.1%             | 2.7%    |
|                                   | Asian & Pacific Islander              | 5.0%             | 4.4%             | 4.0%    |
|                                   | Other Races                           | 3.4%             | 4.0%             | 5.1%    |
|                                   | Hispanic or Latino Population         | 11.0%            | 11.8%            | 13.0%   |
| Non Hispanic or Latino Population | 89.0%                                 | 88.2%            | 87.0%            |         |

This report was produced using data from private and government sources deemed to be reliable and is herein provided without representation or warranty.