

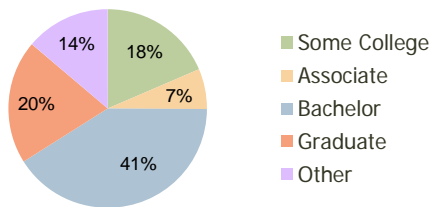
Alden Bridge Village Center The Woodlands, TX	1.00 Mile Radius	3.00 Mile Radius	5.00 Mile Radius
--	---------------------	---------------------	---------------------

Current Year Demographics

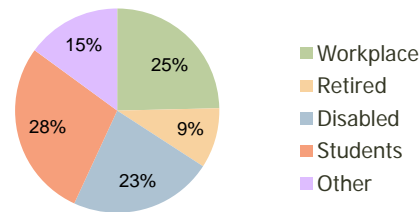
Current Population	11,570	57,128	108,053
Adjusted Total Pop (Carrier Route)	13,222	59,035	112,937
Total Daytime Pop	8,481	44,723	92,309
Workplace Pop	1,666	11,014	34,067
Average Household Income	\$139,488	\$145,824	\$132,309
Median Household Income	\$115,073	\$119,792	\$105,056
Total Housing Units	4,014	20,246	39,922
Median Home Value	\$237,516	\$241,471	\$223,284
Bachelors Degree	43.0%	40.9%	36.7%
Graduate Degree	22.2%	20.2%	17.5%
Total Consumer Spending/Capita	\$325	\$309	\$301

2016 Demographic Projections

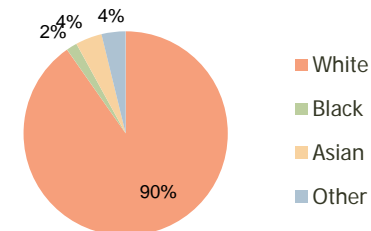
Projected Population	12,668	69,823	134,019
Projected 5 Year Pop Growth	1.8%	4.1%	4.4%
Projected Households	4,400	24,900	49,874
Projected 5 Year Household Growth	1.9%	4.2%	4.6%



Education (3-Mile)



Daytime Population (3-Mile)



Ethnicity (3-Mile)

This report was produced using data from private and government sources deemed to be reliable and is herein provided without representation or warranty.

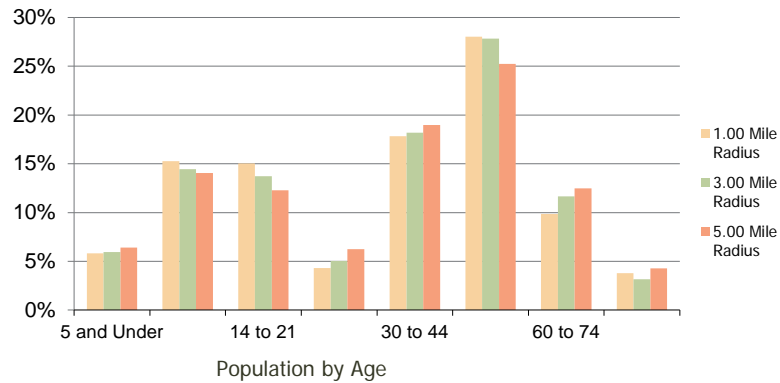
Alden Bridge Village Center
The Woodlands, TX

1.00 Mile
Radius

3.00 Mile
Radius

5.00 Mile
Radius

Population by Age Range



Household Income by Income Range



	1.00 Mile Radius	3.00 Mile Radius	5.00 Mile Radius	
Population	Current Estimated Population	11,570	57,128	108,053
	2010 Census Population	11,458	53,605	100,862
	2000 Census Population	10,166	36,707	60,514
	Historical Annual Growth 2000 to 2010	1.20%	3.86%	5.24%
	Estimated Annual Growth 2010 to 2011	0.56%	3.70%	4.01%
	Projected Annual Growth 2011 to 2016	1.83%	4.09%	4.40%
Households	Current Estimated Households	4,014	20,246	39,922
	2010 Census Households	3,977	18,918	37,071
	2000 Census Households	3,147	11,809	20,473
	Historical Annual Growth 2000 to 2010	2.4%	4.8%	6.1%
	Estimated Annual Growth 2010 to 2011	0.5%	4.0%	4.3%
	Projected Annual Growth 2011 to 2016	1.9%	4.2%	4.6%
Population per Household	2.9	2.8	2.7	
Ethnicity	White	91.1%	90.3%	88.9%
	Black or African American	1.4%	1.7%	2.4%
	Asian & Pacific Islander	4.1%	4.2%	4.2%
	Other Races	3.4%	3.8%	4.6%
	Hispanic or Latino Population	9.9%	10.6%	11.8%
Non Hispanic or Latino Population	90.1%	89.4%	88.2%	

This report was produced using data from private and government sources deemed to be reliable and is herein provided without representation or warranty.