

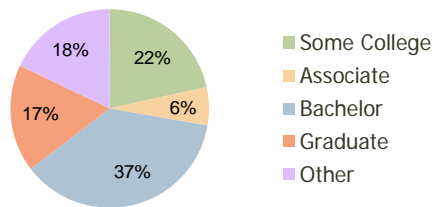
Cochran's Crossing The Woodlands, TX	1.00 Mile Radius	3.00 Mile Radius	5.00 Mile Radius
---	---------------------	---------------------	---------------------

Current Year Demographics

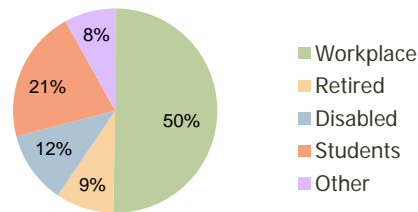
Current Population	7,502	61,470	138,424
Adjusted Total Pop (Carrier Route)	7,229	65,906	142,519
Total Daytime Pop	9,197	80,421	145,978
Workplace Pop	4,295	40,453	70,121
Average Household Income	\$162,548	\$128,237	\$118,346
Median Household Income	\$127,407	\$97,419	\$89,506
Total Housing Units	2,789	24,890	53,100
Median Home Value	\$268,397	\$210,890	\$190,579
Bachelors Degree	45.2%	36.9%	33.0%
Graduate Degree	22.9%	17.5%	15.2%
Total Consumer Spending/Capita	\$319	\$307	\$290

2016 Demographic Projections

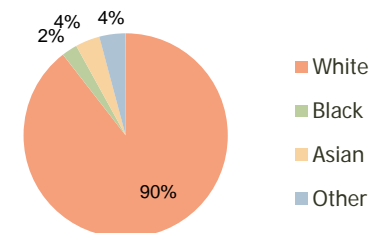
Projected Population	9,213	75,536	177,877
Projected 5 Year Pop Growth	4.2%	4.2%	5.1%
Projected Households	3,452	30,968	68,498
Projected 5 Year Household Growth	4.4%	4.5%	5.2%



Education (3-Mile)



Daytime Population (3-Mile)

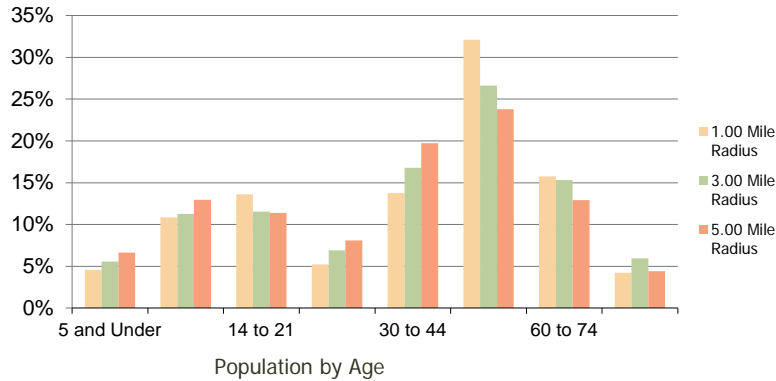


Ethnicity (3-Mile)

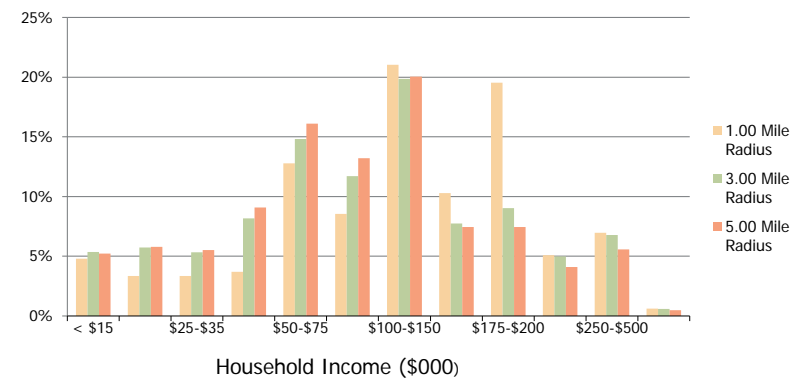
This report was produced using data from private and government sources deemed to be reliable and is herein provided without representation or warranty.

Cochran's Crossing The Woodlands, TX	1.00 Mile Radius	3.00 Mile Radius	5.00 Mile Radius
--	------------------	------------------	------------------

Population by Age Range



Household Income by Income Range



	1.00 Mile Radius	3.00 Mile Radius	5.00 Mile Radius
Population			
Current Estimated Population	7,502	61,470	138,424
2010 Census Population	6,863	57,019	125,883
2000 Census Population	7,721	48,620	87,196
Historical Annual Growth 2000 to 2010	-1.17%	1.61%	3.74%
Estimated Annual Growth 2010 to 2011	5.22%	4.39%	5.58%
Projected Annual Growth 2011 to 2016	4.19%	4.21%	5.14%
Households			
Current Estimated Households	2,789	24,890	53,100
2010 Census Households	2,537	22,937	48,147
2000 Census Households	2,454	16,686	30,699
Historical Annual Growth 2000 to 2010	0.3%	3.2%	4.6%
Estimated Annual Growth 2010 to 2011	5.6%	4.8%	5.8%
Projected Annual Growth 2011 to 2016	4.4%	4.5%	5.2%
Population per Household	2.7	2.5	2.6
Ethnicity			
White	91.3%	89.5%	86.4%
Black or African American	1.7%	2.5%	3.4%
Asian & Pacific Islander	3.9%	3.9%	4.0%
Other Races	3.1%	4.2%	6.2%
Hispanic or Latino Population	8.1%	10.4%	14.6%
Non Hispanic or Latino Population	91.9%	89.6%	85.4%

This report was produced using data from private and government sources deemed to be reliable and is herein provided without representation or warranty.