

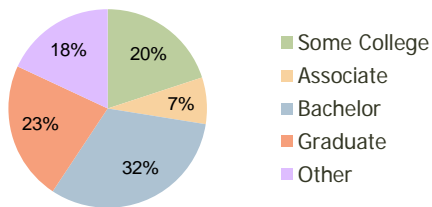
Gelson's Westlake Market Plaza Thousand Oaks, CA	1.00 Mile Radius	3.00 Mile Radius	5.00 Mile Radius
---	---------------------	---------------------	---------------------

### Current Year Demographics

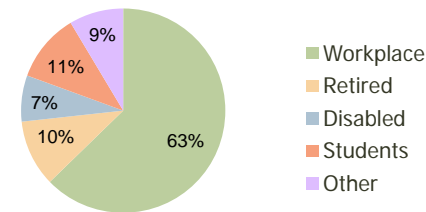
Current Population	10,880	43,785	114,476
Adjusted Total Pop (Carrier Route)	14,042	49,107	121,277
Total Daytime Pop	26,413	64,891	129,083
Workplace Pop	18,222	40,706	69,934
Average Household Income	\$135,958	\$140,114	\$134,931
Median Household Income	\$97,430	\$100,082	\$100,663
Total Housing Units	4,715	17,422	43,194
Median Home Value	\$591,457	\$587,025	\$557,839
Bachelors Degree	34.9%	31.8%	31.3%
Graduate Degree	23.3%	22.6%	20.7%
Total Consumer Spending/Capita	\$343	\$340	\$334

### 2016 Demographic Projections

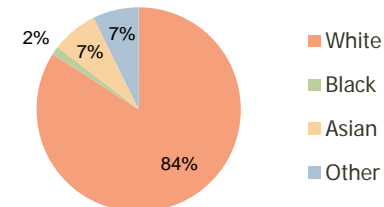
Projected Population	11,731	46,733	122,603
Projected 5 Year Pop Growth	1.5%	1.3%	1.4%
Projected Households	5,116	18,680	46,409
Projected 5 Year Household Growth	1.6%	1.4%	1.4%



Education (3-Mile)



Daytime Population (3-Mile)

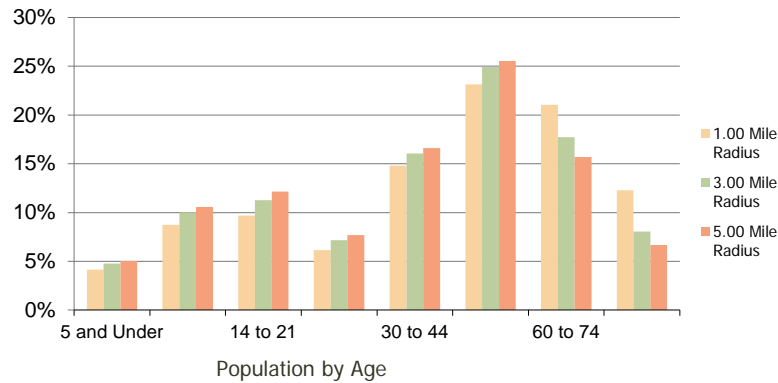


Ethnicity (3-Mile)

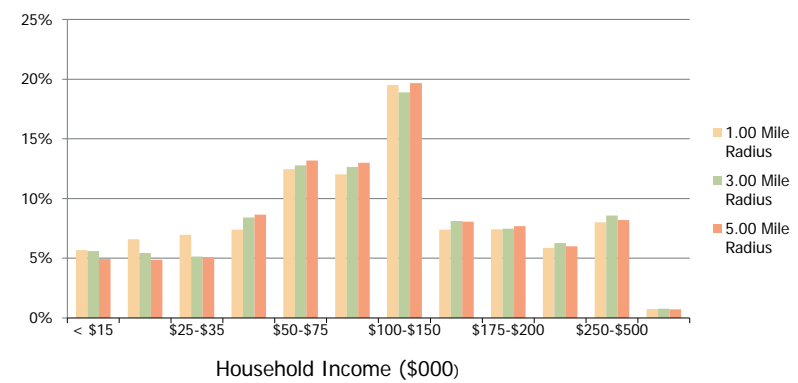
This report was produced using data from private and government sources deemed to be reliable and is herein provided without representation or warranty.

<b>Gelson's Westlake Market Plaza</b> Thousand Oaks, CA	1.00 Mile Radius	3.00 Mile Radius	5.00 Mile Radius
--	------------------	------------------	------------------

**Population by Age Range**



**Household Income by Income Range**



	1.00 Mile Radius	3.00 Mile Radius	5.00 Mile Radius
<b>Population</b>			
Current Estimated Population	10,880	43,785	114,476
2010 Census Population	10,920	44,094	114,185
2000 Census Population	10,461	43,660	112,591
Historical Annual Growth 2000 to 2010	0.43%	0.10%	0.14%
Estimated Annual Growth 2010 to 2011	-0.21%	-0.40%	0.15%
Projected Annual Growth 2011 to 2016	1.52%	1.31%	1.38%
<b>Households</b>			
Current Estimated Households	4,715	17,422	43,194
2010 Census Households	4,699	17,517	43,055
2000 Census Households	4,492	16,831	41,079
Historical Annual Growth 2000 to 2010	0.4%	0.4%	0.5%
Estimated Annual Growth 2010 to 2011	0.2%	-0.3%	0.2%
Projected Annual Growth 2011 to 2016	1.6%	1.4%	1.4%
Population per Household	2.3	2.5	2.6
<b>Ethnicity</b>			
White	86.7%	84.1%	82.8%
Black or African American	1.2%	1.3%	1.3%
Asian & Pacific Islander	6.5%	7.3%	7.8%
Other Races	5.6%	7.3%	8.1%
Hispanic or Latino Population	8.2%	13.1%	14.0%
Non Hispanic or Latino Population	91.8%	86.9%	86.0%

This report was produced using data from private and government sources deemed to be reliable and is herein provided without representation or warranty.