

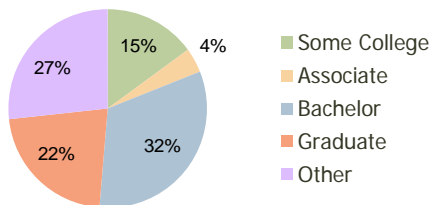
Hillcrest Village University Park, TX	1.00 Mile Radius	3.00 Mile Radius	5.00 Mile Radius
--	---------------------	---------------------	---------------------

Current Year Demographics

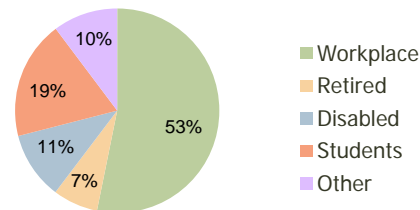
Current Population	18,008	177,511	368,301
Adjusted Total Pop (Carrier Route)	17,644	196,784	386,219
Total Daytime Pop	39,686	207,956	568,219
Workplace Pop	14,429	110,599	348,861
Average Household Income	\$204,581	\$114,613	\$106,921
Median Household Income	\$124,433	\$62,541	\$60,495
Total Housing Units	6,113	84,036	163,103
Median Home Value	\$775,119	\$306,897	\$262,607
Bachelors Degree	39.5%	32.4%	29.0%
Graduate Degree	40.0%	22.0%	19.1%
Total Consumer Spending/Capita	\$320	\$285	\$281

2016 Demographic Projections

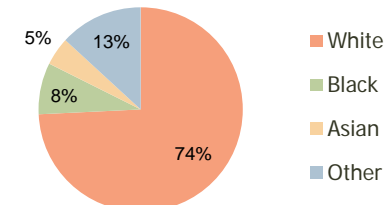
Projected Population	18,950	194,398	402,879
Projected 5 Year Pop Growth	1.0%	1.8%	1.8%
Projected Households	6,520	92,447	179,944
Projected 5 Year Household Growth	1.3%	1.9%	2.0%



Education (3-Mile)



Daytime Population (3-Mile)

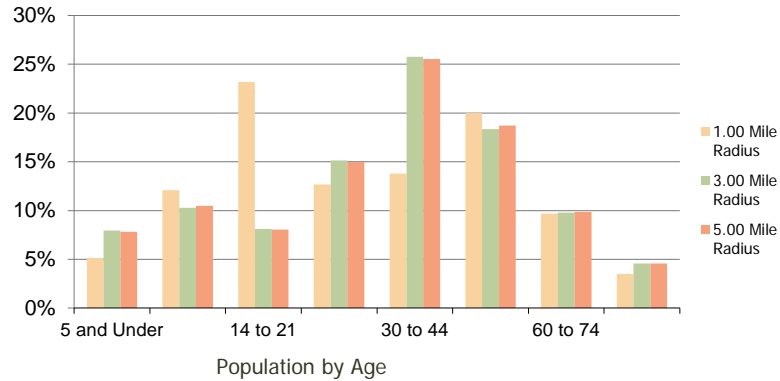


Ethnicity (3-Mile)

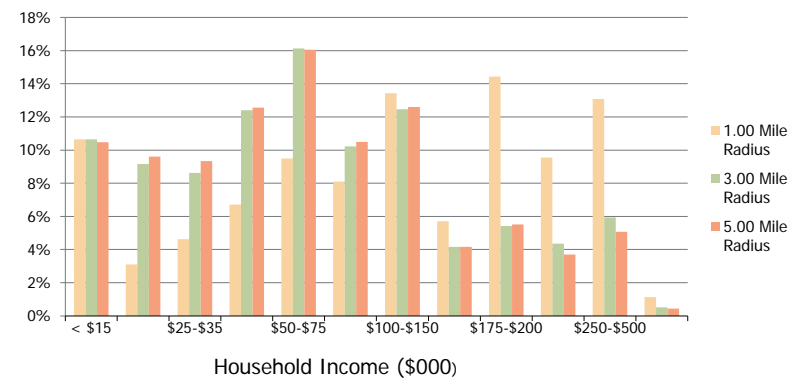
This report was produced using data from private and government sources deemed to be reliable and is herein provided without representation or warranty.

Hillcrest Village University Park, TX	1.00 Mile Radius	3.00 Mile Radius	5.00 Mile Radius
--	---------------------	---------------------	---------------------

Population by Age Range



Household Income by Income Range



Population	Current Estimated Population	18,008	177,511	368,301
	2010 Census Population	17,658	173,819	356,555
	2000 Census Population	18,759	188,305	378,125
	Historical Annual Growth 2000 to 2010	-0.60%	-0.80%	-0.59%
	Estimated Annual Growth 2010 to 2011	1.13%	1.21%	1.87%
	Projected Annual Growth 2011 to 2016	1.03%	1.83%	1.81%
Households	Current Estimated Households	6,113	84,036	163,103
	2010 Census Households	5,950	82,149	157,310
	2000 Census Households	6,628	85,766	157,053
	Historical Annual Growth 2000 to 2010	-1.1%	-0.4%	0.0%
	Estimated Annual Growth 2010 to 2011	1.6%	1.3%	2.1%
	Projected Annual Growth 2011 to 2016	1.3%	1.9%	2.0%
Population per Household		2.5	2.1	2.2
Ethnicity	White	91.5%	74.2%	70.4%
	Black or African American	1.8%	8.1%	10.4%
	Asian & Pacific Islander	3.5%	4.5%	3.6%
	Other Races	3.2%	13.2%	15.7%
	Hispanic or Latino Population	5.7%	24.8%	30.7%
Non Hispanic or Latino Population		94.3%	75.2%	69.3%

This report was produced using data from private and government sources deemed to be reliable and is herein provided without representation or warranty.