

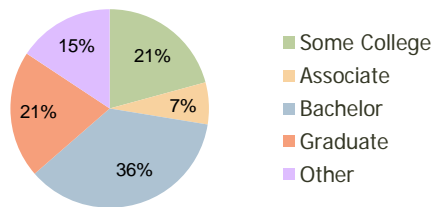
Preston Park Village Plano, TX	1.00 Mile Radius	3.00 Mile Radius	5.00 Mile Radius
-----------------------------------	---------------------	---------------------	---------------------

Current Year Demographics

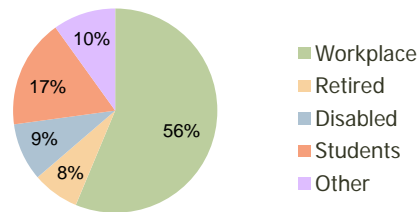
Current Population	13,826	119,980	331,209
Adjusted Total Pop (Carrier Route)	13,266	120,448	338,308
Total Daytime Pop	20,398	145,855	373,694
Workplace Pop	12,508	82,115	206,651
Average Household Income	\$115,112	\$112,511	\$103,815
Median Household Income	\$74,503	\$77,012	\$75,044
Total Housing Units	6,035	53,520	145,746
Median Home Value	\$254,859	\$242,936	\$212,903
Bachelors Degree	35.8%	36.0%	36.1%
Graduate Degree	21.0%	20.7%	19.4%
Total Consumer Spending/Capita	\$319	\$318	\$309

2016 Demographic Projections

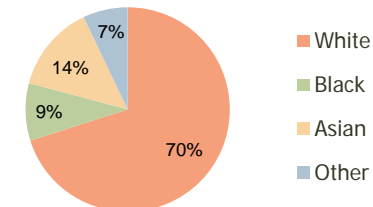
Projected Population	17,070	143,219	390,752
Projected 5 Year Pop Growth	4.3%	3.6%	3.4%
Projected Households	7,331	64,030	172,531
Projected 5 Year Household Growth	4.0%	3.7%	3.4%



Education (3-Mile)



Daytime Population (3-Mile)

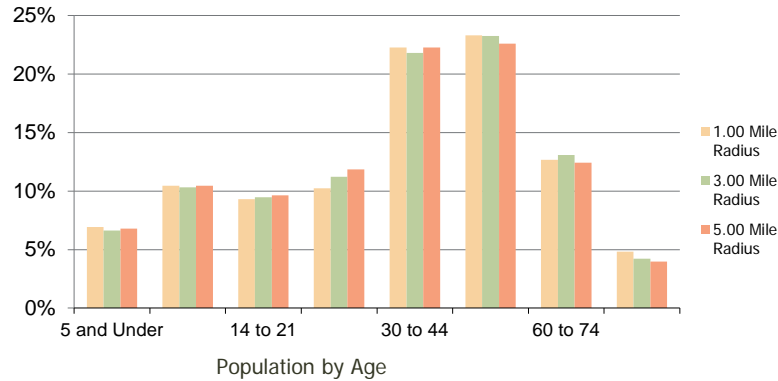


Ethnicity (3-Mile)

This report was produced using data from private and government sources deemed to be reliable and is herein provided without representation or warranty.

Preston Park Village Plano, TX	1.00 Mile Radius	3.00 Mile Radius	5.00 Mile Radius
--	------------------	------------------	------------------

Population by Age Range



Household Income by Income Range



	1.00 Mile Radius	3.00 Mile Radius	5.00 Mile Radius
Population			
Current Estimated Population	13,826	119,980	331,209
2010 Census Population	12,808	114,260	315,978
2000 Census Population	12,025	109,883	288,835
Historical Annual Growth 2000 to 2010	0.63%	0.39%	0.90%
Estimated Annual Growth 2010 to 2011	4.47%	2.83%	2.73%
Projected Annual Growth 2011 to 2016	4.31%	3.60%	3.36%
Households			
Current Estimated Households	6,035	53,520	145,746
2010 Census Households	5,677	50,935	138,839
2000 Census Households	5,255	47,914	122,351
Historical Annual Growth 2000 to 2010	0.8%	0.6%	1.3%
Estimated Annual Growth 2010 to 2011	3.6%	2.9%	2.8%
Projected Annual Growth 2011 to 2016	4.0%	3.7%	3.4%
Population per Household	2.3	2.2	2.3
Ethnicity			
White	72.3%	70.1%	69.3%
Black or African American	6.5%	9.1%	9.6%
Asian & Pacific Islander	15.1%	13.8%	12.9%
Other Races	6.1%	7.1%	8.2%
Hispanic or Latino Population	9.2%	11.1%	13.1%
Non Hispanic or Latino Population	90.8%	88.9%	86.9%

This report was produced using data from private and government sources deemed to be reliable and is herein provided without representation or warranty.