

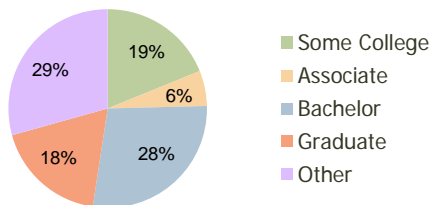
South Lowry Square Denver, CO	1.00 Mile Radius	3.00 Mile Radius	5.00 Mile Radius
----------------------------------	---------------------	---------------------	---------------------

### Current Year Demographics

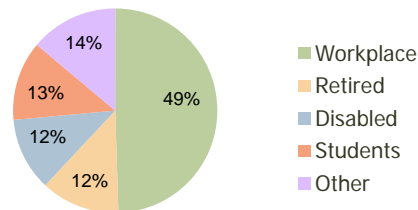
Current Population	17,571	173,151	462,523
Adjusted Total Pop (Carrier Route)	19,901	178,989	478,481
Total Daytime Pop	13,246	168,251	510,670
Workplace Pop	5,258	83,264	232,692
Average Household Income	\$60,524	\$73,314	\$73,435
Median Household Income	\$42,645	\$47,371	\$47,991
Total Housing Units	8,794	83,576	217,579
Median Home Value	\$168,047	\$216,356	\$215,299
Bachelors Degree	26.9%	27.8%	27.1%
Graduate Degree	19.7%	18.3%	17.7%
Total Consumer Spending/Capita	\$282	\$287	\$283

### 2016 Demographic Projections

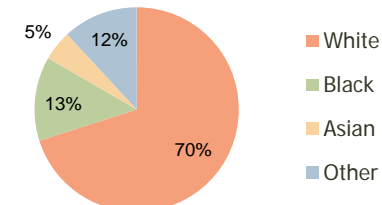
Projected Population	18,873	187,165	495,849
Projected 5 Year Pop Growth	1.4%	1.6%	1.4%
Projected Households	9,471	90,294	233,477
Projected 5 Year Household Growth	1.5%	1.6%	1.4%



Education (3-Mile)



Daytime Population (3-Mile)



Ethnicity (3-Mile)

This report was produced using data from private and government sources deemed to be reliable and is herein provided without representation or warranty.

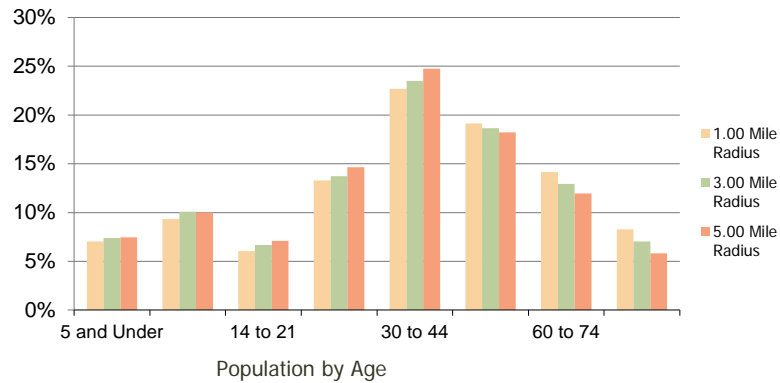
**South Lowry Square**  
Denver, CO

1.00 Mile  
Radius

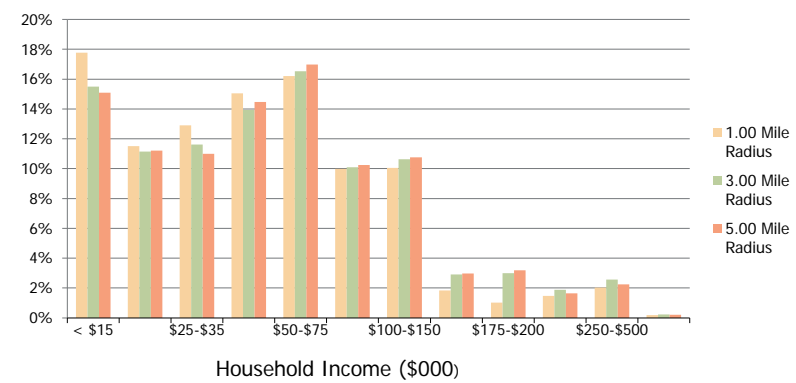
3.00 Mile  
Radius

5.00 Mile  
Radius

**Population by Age Range**



**Household Income by Income Range**



	1.00 Mile Radius	3.00 Mile Radius	5.00 Mile Radius
<b>Population</b>			
Current Estimated Population	17,571	173,151	462,523
2010 Census Population	18,256	169,157	453,213
2000 Census Population	19,191	156,648	429,968
Historical Annual Growth 2000 to 2010	-0.50%	0.77%	0.53%
Estimated Annual Growth 2010 to 2011	-2.16%	1.34%	1.17%
Projected Annual Growth 2011 to 2016	1.44%	1.57%	1.40%
<b>Households</b>			
Current Estimated Households	8,794	83,576	217,579
2010 Census Households	9,118	81,701	212,911
2000 Census Households	9,667	77,140	204,882
Historical Annual Growth 2000 to 2010	-0.6%	0.6%	0.4%
Estimated Annual Growth 2010 to 2011	-2.1%	1.3%	1.2%
Projected Annual Growth 2011 to 2016	1.5%	1.6%	1.4%
Population per Household	2.0	2.1	2.1
<b>Ethnicity</b>			
White	68.2%	70.0%	70.3%
Black or African American	16.5%	13.3%	12.8%
Asian & Pacific Islander	5.6%	4.8%	3.9%
Other Races	9.7%	11.9%	13.0%
Hispanic or Latino Population	13.8%	17.6%	20.2%
Non Hispanic or Latino Population	86.2%	82.4%	79.8%

This report was produced using data from private and government sources deemed to be reliable and is herein provided without representation or warranty.