

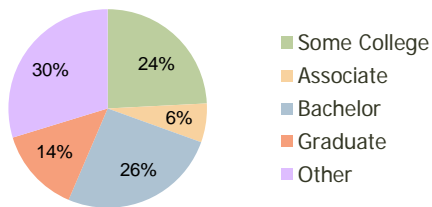
Littleton Square Littleton, CO	1.00 Mile Radius	3.00 Mile Radius	5.00 Mile Radius
-----------------------------------	---------------------	---------------------	---------------------

Current Year Demographics

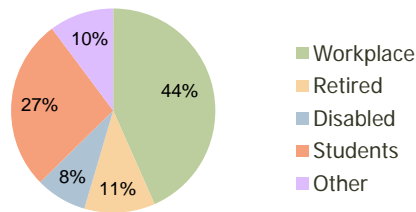
Current Population	15,656	90,070	264,208
Adjusted Total Pop (Carrier Route)	15,642	91,012	266,960
Total Daytime Pop	15,950	116,935	339,807
Workplace Pop	6,281	50,724	146,940
Average Household Income	\$58,103	\$84,567	\$92,224
Median Household Income	\$38,502	\$57,733	\$65,073
Total Housing Units	6,809	38,720	110,941
Median Home Value	\$218,855	\$227,791	\$245,713
Bachelors Degree	20.8%	25.9%	29.3%
Graduate Degree	8.8%	13.8%	17.0%
Total Consumer Spending/Capita	\$271	\$288	\$297

2016 Demographic Projections

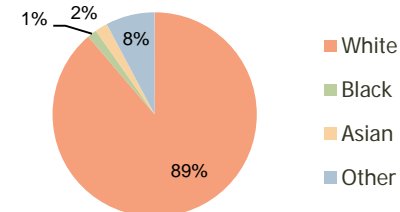
Projected Population	16,665	96,490	286,806
Projected 5 Year Pop Growth	1.3%	1.4%	1.7%
Projected Households	7,200	41,440	121,184
Projected 5 Year Household Growth	1.1%	1.4%	1.8%



Education (3-Mile)



Daytime Population (3-Mile)

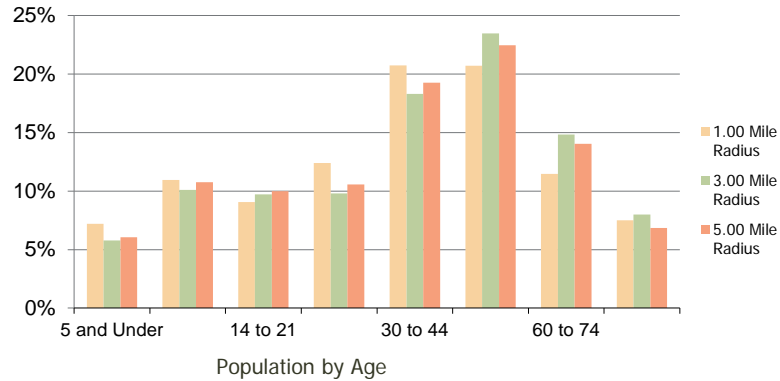


Ethnicity (3-Mile)

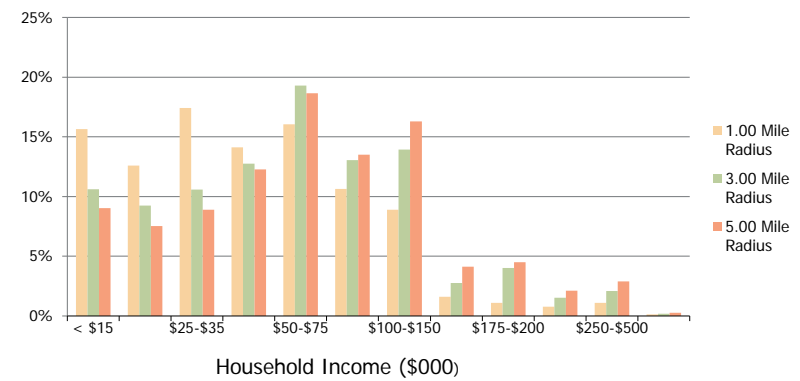
This report was produced using data from private and government sources deemed to be reliable and is herein provided without representation or warranty.

Littleton Square Littleton, CO	1.00 Mile Radius	3.00 Mile Radius	5.00 Mile Radius
-----------------------------------	---------------------	---------------------	---------------------

Population by Age Range



Household Income by Income Range



Population	Current Estimated Population	15,656	90,070	264,208
	2010 Census Population	15,279	87,729	257,067
	2000 Census Population	15,362	91,472	254,155
	Historical Annual Growth 2000 to 2010	-0.05%	-0.42%	0.11%
	Estimated Annual Growth 2010 to 2011	1.40%	1.52%	1.58%
Households	Projected Annual Growth 2011 to 2016	1.26%	1.39%	1.65%
	Current Estimated Households	6,809	38,720	110,941
	2010 Census Households	6,662	37,743	107,552
	2000 Census Households	6,815	37,767	102,983
	Historical Annual Growth 2000 to 2010	-0.2%	0.0%	0.4%
Ethnicity	Estimated Annual Growth 2010 to 2011	1.3%	1.5%	1.8%
	Projected Annual Growth 2011 to 2016	1.1%	1.4%	1.8%
	Population per Household	2.3	2.3	2.3
	White	83.2%	88.7%	86.7%
	Black or African American	2.1%	1.5%	1.7%
	Asian & Pacific Islander	1.9%	2.0%	3.2%
	Other Races	12.8%	7.8%	8.4%
Hispanic or Latino Population	22.0%	12.6%	14.4%	
Non Hispanic or Latino Population	78.0%	87.4%	85.6%	

This report was produced using data from private and government sources deemed to be reliable and is herein provided without representation or warranty.