

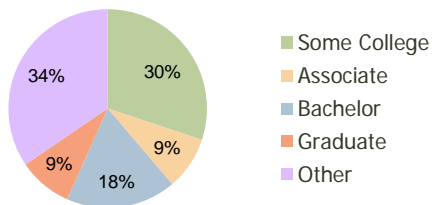
Centennial Crossroads Plaza Las Vegas, NV	1.00 Mile Radius	3.00 Mile Radius	5.00 Mile Radius
--	---------------------	---------------------	---------------------

Current Year Demographics

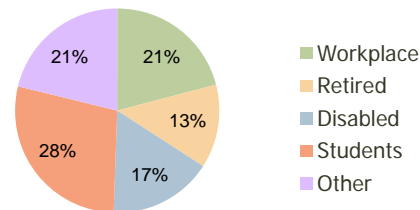
Current Population	10,201	100,189	254,000
Adjusted Total Pop (Carrier Route)	11,018	96,463	253,249
Total Daytime Pop	9,059	63,316	158,980
Workplace Pop	3,421	13,242	37,327
Average Household Income	\$78,488	\$90,713	\$83,678
Median Household Income	\$67,733	\$77,547	\$71,849
Total Housing Units	3,865	35,645	91,438
Median Home Value	\$125,448	\$142,569	\$129,869
Bachelors Degree	13.6%	17.9%	16.8%
Graduate Degree	6.3%	8.8%	8.3%
Total Consumer Spending/Capita	\$270	\$292	\$288

2016 Demographic Projections

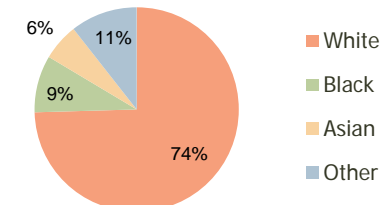
Projected Population	12,256	122,222	312,479
Projected 5 Year Pop Growth	3.7%	4.1%	4.2%
Projected Households	4,627	43,584	112,711
Projected 5 Year Household Growth	3.7%	4.1%	4.3%



Education (3-Mile)



Daytime Population (3-Mile)

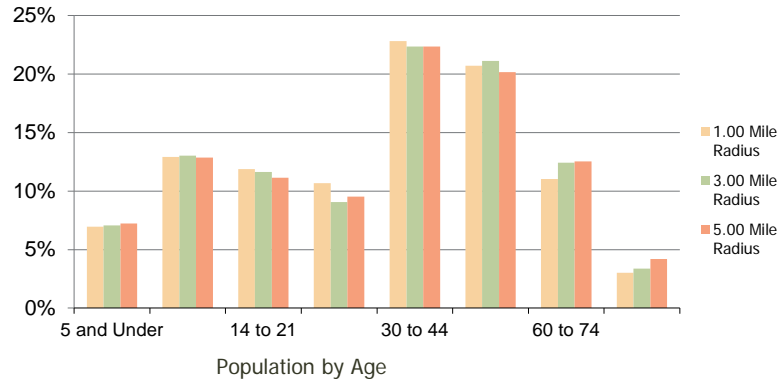


Ethnicity (3-Mile)

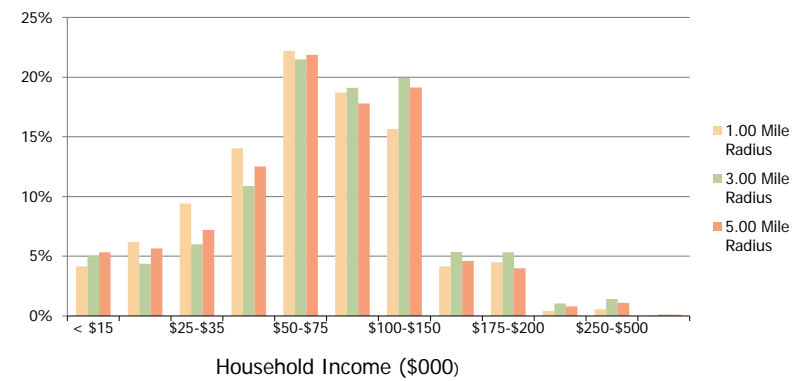
This report was produced using data from private and government sources deemed to be reliable and is herein provided without representation or warranty.

Centennial Crossroads Plaza Las Vegas, NV	1.00 Mile Radius	3.00 Mile Radius	5.00 Mile Radius
---	------------------	------------------	------------------

Population by Age Range



Household Income by Income Range



	1.00 Mile Radius	3.00 Mile Radius	5.00 Mile Radius
Population			
Current Estimated Population	10,201	100,189	254,000
2010 Census Population	9,907	97,047	243,910
2000 Census Population	7,544	43,617	120,871
Historical Annual Growth 2000 to 2010	2.76%	8.33%	7.27%
Estimated Annual Growth 2010 to 2011	1.69%	1.84%	2.34%
Projected Annual Growth 2011 to 2016	3.74%	4.06%	4.23%
Households			
Current Estimated Households	3,865	35,645	91,438
2010 Census Households	3,758	34,494	87,704
2000 Census Households	2,710	15,431	43,617
Historical Annual Growth 2000 to 2010	3.3%	8.4%	7.2%
Estimated Annual Growth 2010 to 2011	1.6%	1.9%	2.4%
Projected Annual Growth 2011 to 2016	3.7%	4.1%	4.3%
Population per Household	2.6	2.8	2.8
Ethnicity			
White	73.3%	74.6%	71.1%
Black or African American	10.8%	9.0%	10.4%
Asian & Pacific Islander	4.5%	5.8%	6.4%
Other Races	11.4%	10.6%	12.1%
Hispanic or Latino Population	17.1%	14.9%	17.0%
Non Hispanic or Latino Population	82.9%	85.1%	83.0%

This report was produced using data from private and government sources deemed to be reliable and is herein provided without representation or warranty.