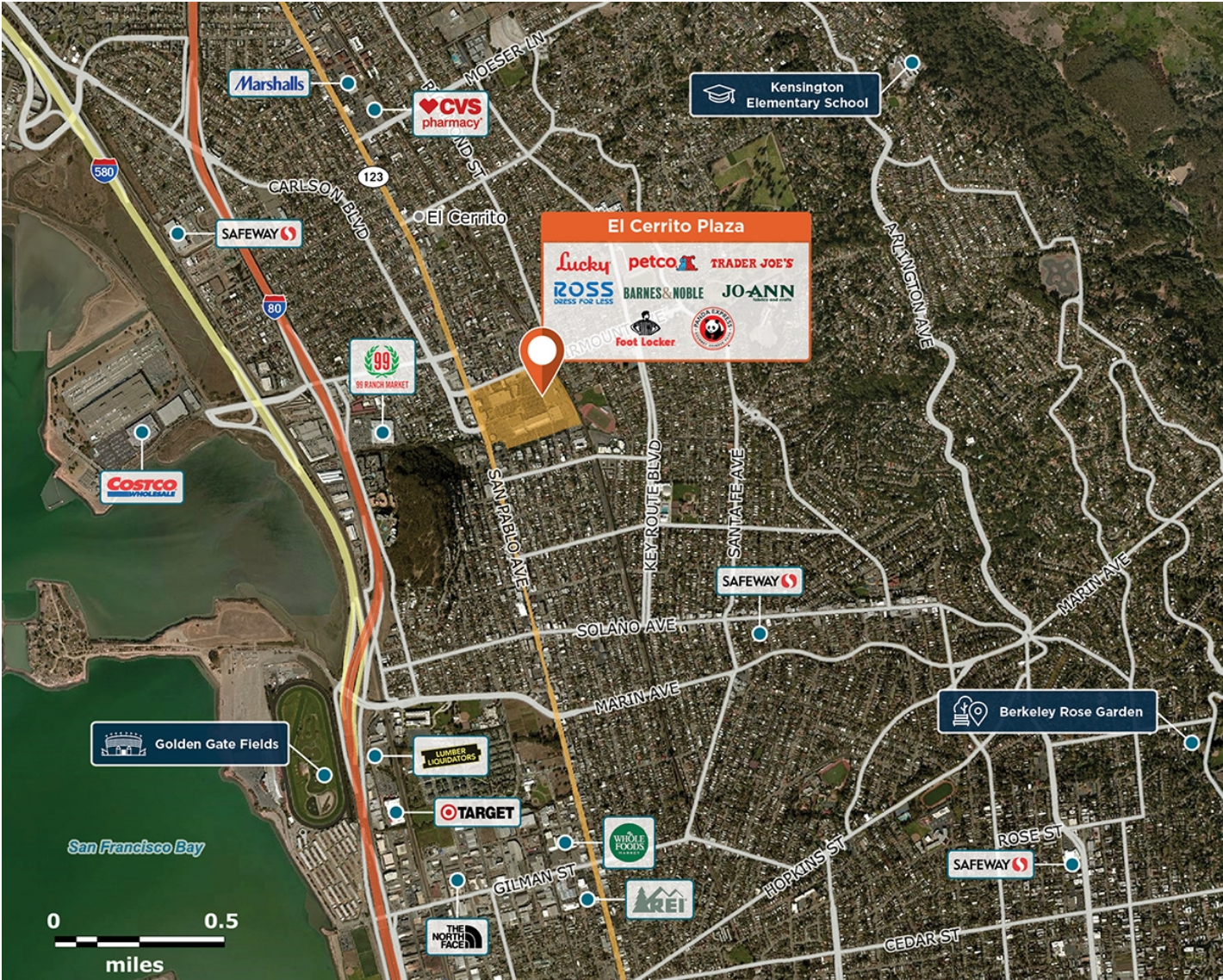


El Cerrito Plaza

📍 2000-8000 El Cerrito Plaza, El Cerrito, CA 94530



Strategically located at the B.A.R.T Station on a major thoroughfare with a dense population.

Center Size: 255,828
Spaces Available: 5

Within 3 Miles

Population	139,213
Avg. Household Income	149,246
Avg. Home Value	\$1,676,336
Annual Visits	4,010,587
Vehicles Per Day	18,701

El Cerrito Plaza

📍 2000-8000 El Cerrito Plaza, El Cerrito, CA 94530

Center Size: 255,828



SPACE	TENANT	SF
C001	AVAILABLE	2,885
D003	AVAILABLE	1,080
D007	AVAILABLE	3,309
I011	AVAILABLE	706
J013	AVAILABLE SOON	2,242
A	LUCKY'S	0
B	ROSS DRESS FOR LESS	30,241
C002	SPRINT	3,415
C003	CITIBANK	2,400
C005	KYOTO RAMEN AND CURRY HOUSE	1,200
C006	THE UPS STORE	1,200
C007	ALL STAR DONUTS	1,200
C008	LILIKOI	900
C009	STARBUCKS	1,500
D001	AT&T	2,400
D002	CLASSY NAILS	1,320
D004	H & R BLOCK	1,200
D005	EUROPEAN WAX CENTER	1,200
E001	DAVE'S HOT CHICKEN	2,287
E002	PANDA EXPRESS	1,900
E003	JAMBA JUICE	1,200
E004	CALIFORNIA FISH GRILL	2,400
E2	MARSHALLS	30,000
E3	BARNES & NOBLE	25,016
F	DAISO	0
G	8000 ECI (SUB: ROMANOS)	0
H	CVS	0
I001	SEE'S CANDIES	1,093
I002	TRADER JOE'S	11,188
I010	GREAT AMERICAN DRY CLEANERS	1,910
I012	YAMMY SUSHI	750
I013	CENTER FOR BETTER HEARING AIDS	750
I014	EL CERRITO OPTOMETRY	1,500

1 of 2

El Cerrito Plaza

📍 2000-8000 El Cerrito Plaza, El Cerrito, CA 94530

Center Size: 255,828



SPACE	TENANT	SF
I015	PACIFIC DENTAL SERVICES	2,500
I015B	BURGERIM	2,083
J002	SOLA SALON STUDIOS	7,500
J003	FOOT LOCKER	8,179
J004	PETCO	15,482
J008	VERIZON WIRELESS	3,000
J009	C2 EDUCATION CENTER	1,880
J010	IKE'S LOVE & SANDWICHES	1,250
J011	WINGSTOP	1,250
J015	PLANNED PARENTHOOD	3,560
J016	CLUB PILATES	1,500
J017	SALONCENTRIC	1,617
J018	MEL-O-DEE LOUNGE	1,409
J019	COMCAST	2,418
J020	CHEF'S CHINESE FOOD	1,613
J021	100% CHIROPRACTIC	1,868
K002	JO-ANN FABRICS	34,310
K003	EL CERRITO SPINCYCLE	2,628

2 of 2