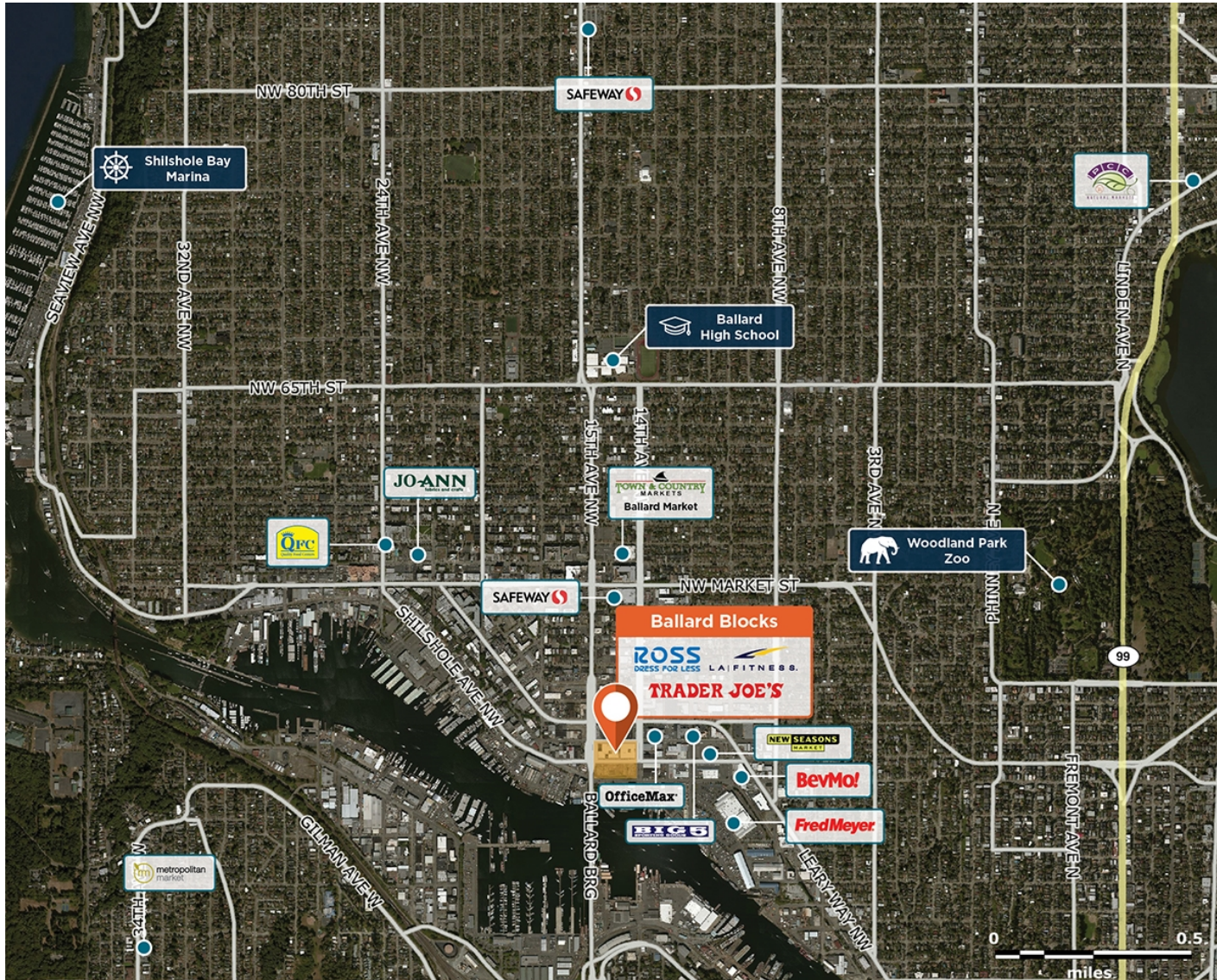
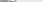


# Ballard Blocks

📍 1416 NW Ballard Way, Seattle, WA 98107



Just north of downtown Seattle, Ballard is growing with an influx of young families and professionals.

 LEED Silver Certified

**Center Size: 248,572**

**Spaces Available: 1**

## Within 3 Miles

<b>Population</b>	<b>244,435</b>
-------------------	----------------

<b>Avg. Household Income</b>	<b>199,964</b>
------------------------------	----------------

**Avg. Home Value** **\$1,280,827**

**Annual Visits** **2,908,221**

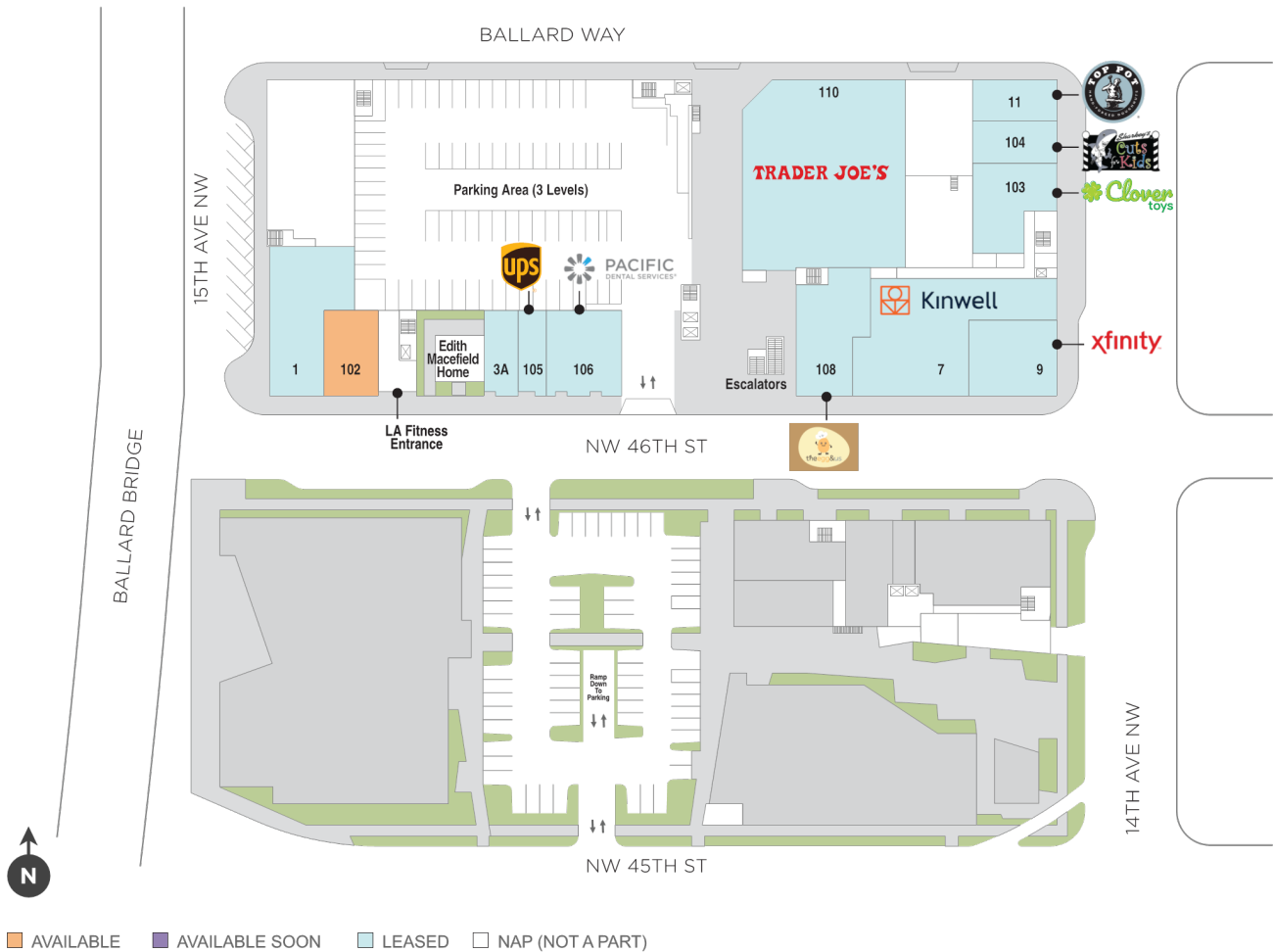
**Vehicles Per Day** **58,400**



# Ballard Blocks

📍 1416 NW Ballard Way, Seattle, WA 98107

## Ballard I - Level 1



SPACE	TENANT	SF
102	AVAILABLE	2,119
1	BALLARD MODERN DENTISTRY KIDS	3,667
103	CLOVER TOYS	2,496
104	SHARKEY'S CUTS FOR KIDS	1,170
105	THE UPS STORE	1,107
106	PACIFIC DENTAL SERVICES	2,612
108	THE BLOCK CAFE	3,179
11	TOP POT DOUGHNUTS	1,527
110	TRADER JOE'S	12,000
301	MOSAIC SALON GROUP	6,347
3A	NAUTICAL BOWLS	946
7	KINWELL	6,655
9	XFINITY	2,575

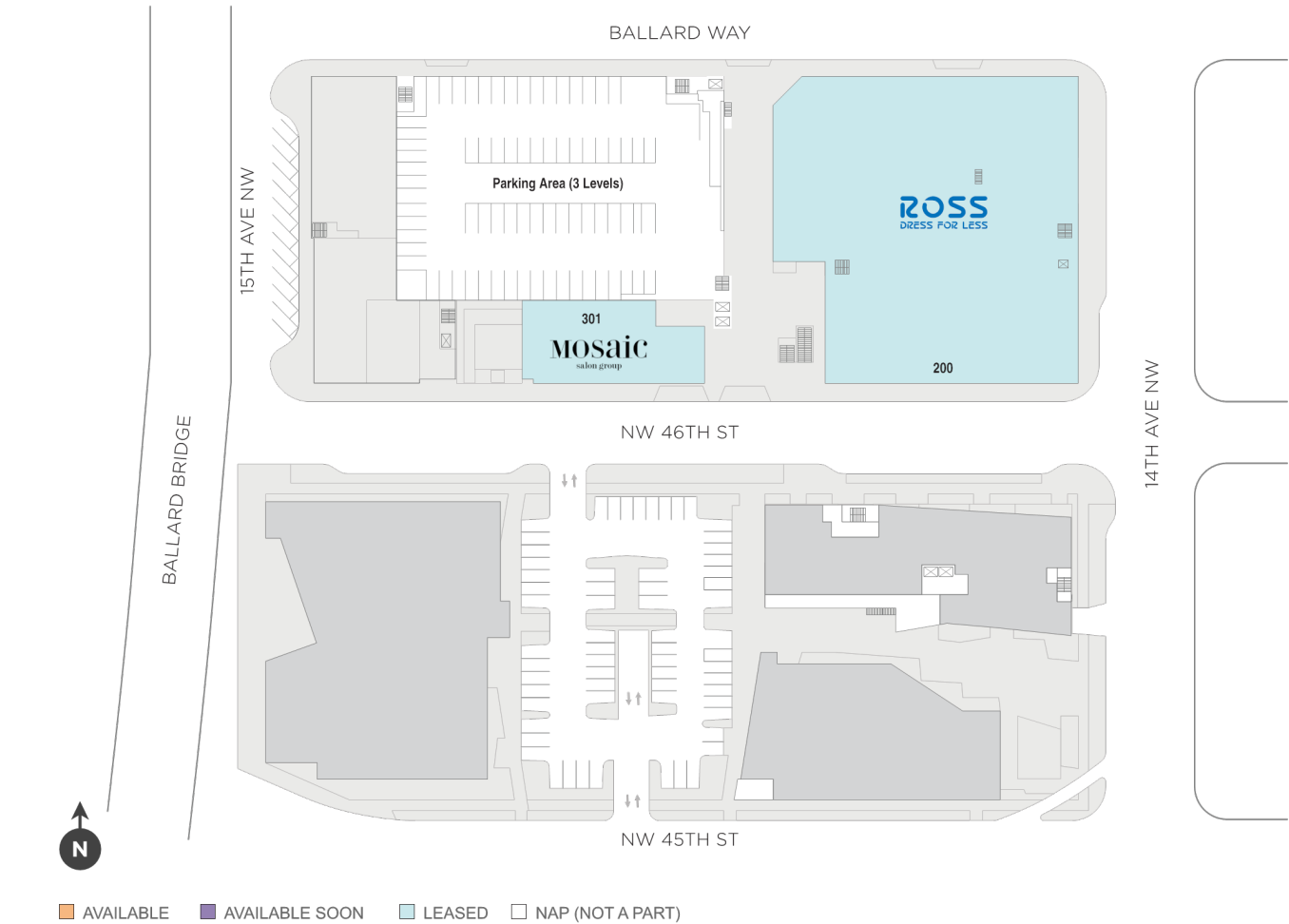
1 of 1 (Ballard I - Level 1 Site Plan)

# Ballard Blocks

📍 1416 NW Ballard Way, Seattle, WA 98107

## Ballard I - Level 2

SPACE	TENANT	SF
200	ROSS DRESS FOR LESS	34,907
301	SALON REPUBLIC	6,347



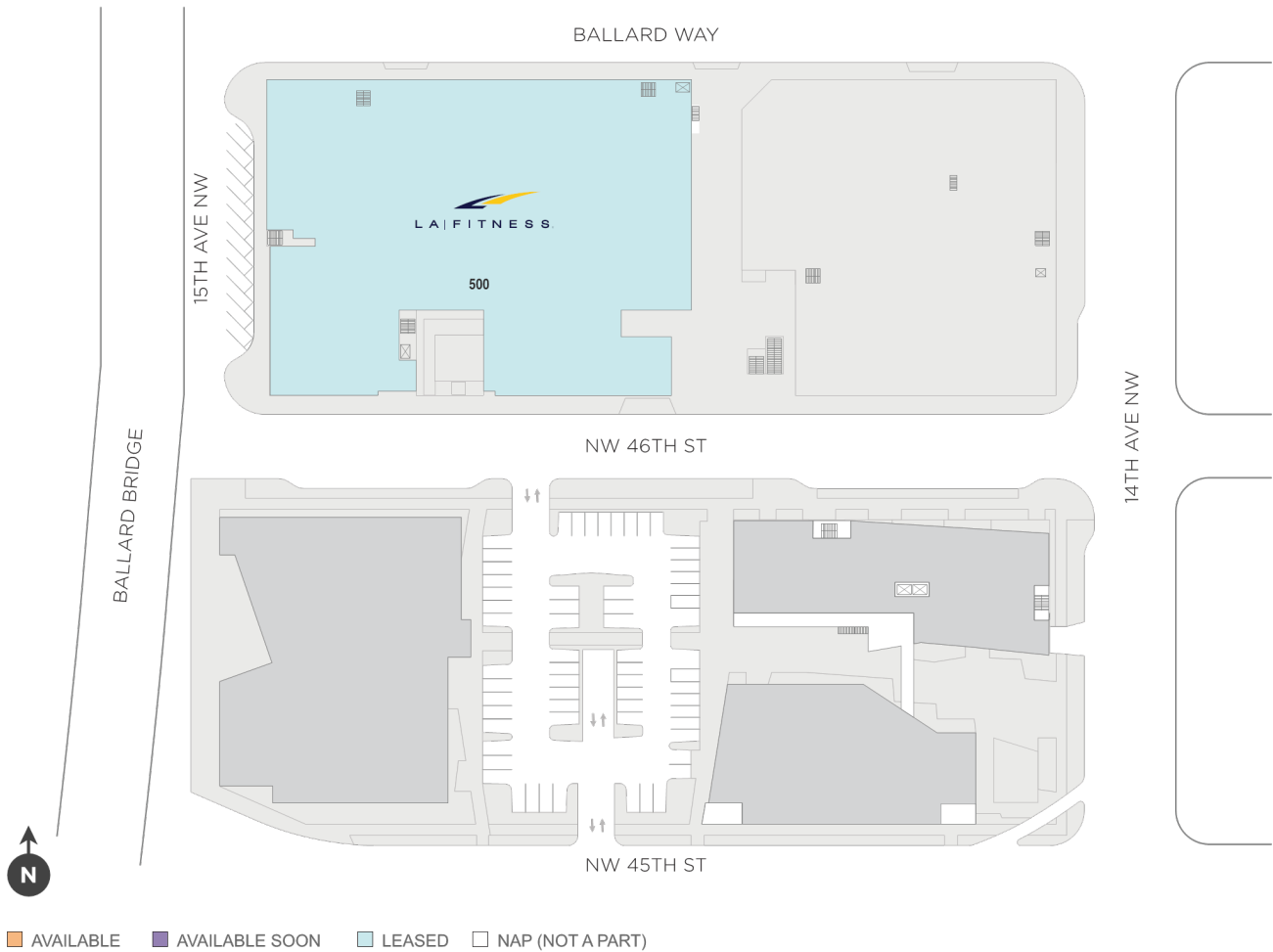
1 of 1 (Ballard I - Level 2 Site Plan)

# Ballard Blocks

📍 1416 NW Ballard Way, Seattle, WA 98107

## Ballard I - Level 3

SPACE	TENANT	SF
500	LA FITNESS	50,658



1 of 1 (Ballard I - Level 3 Site Plan)

# Ballard Blocks

1416 NW Ballard Way, Seattle, WA 98107

## Ballard II - Level 1

SPACE	TENANT	SF
100	PCC COMMUNITY MARKETS	25,576
200	WEST MARINE	25,904
400	FEDEX OFFICE	2,697
403	JUST FOOD FOR DOGS	720
B	NEXT LEVEL	2,018
C	SEATTLE SUN TAN	2,240
F	SEPHORA	5,059
G	RK NAILS	1,065



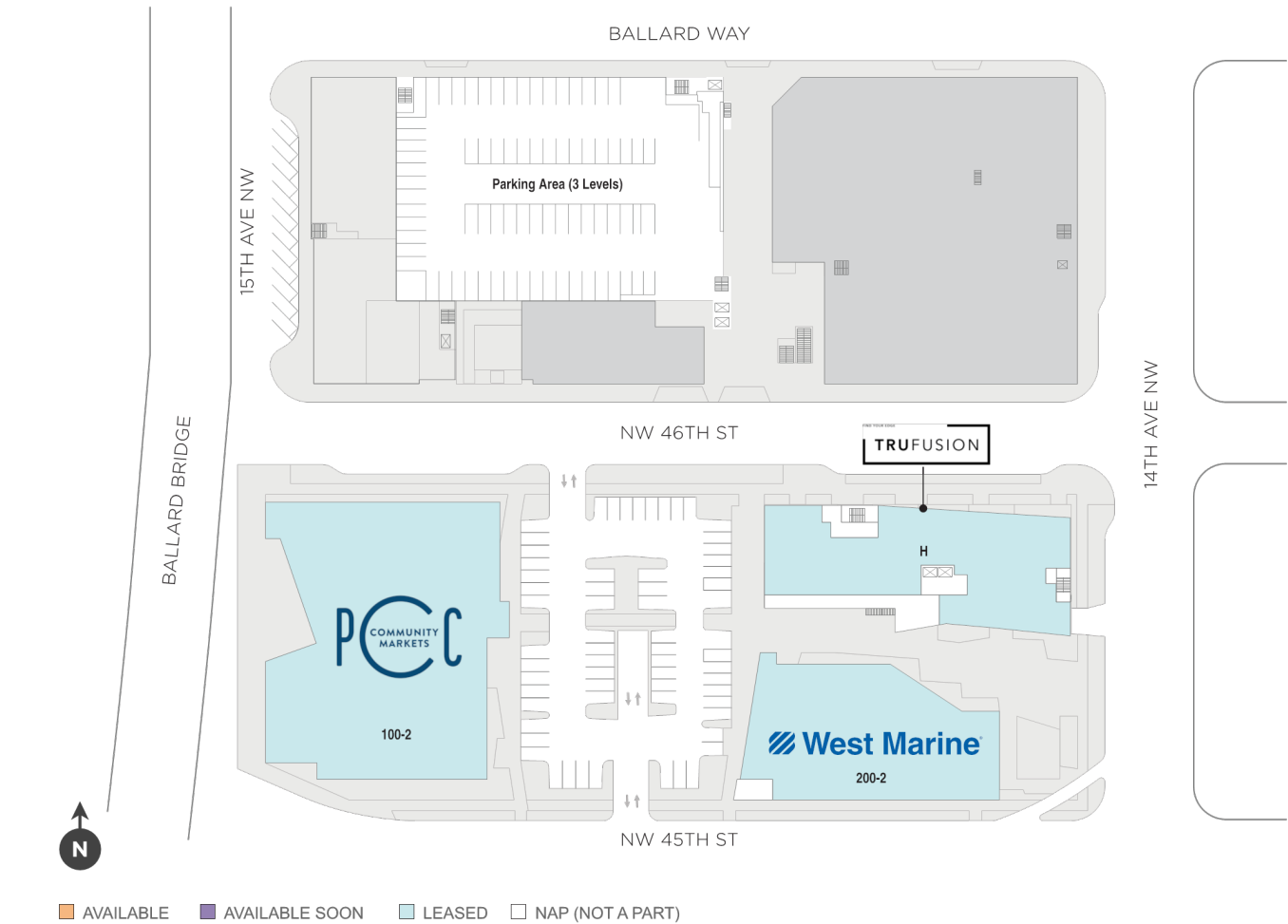
1 of 1 (Ballard II - Level 1 Site Plan)

# Ballard Blocks

📍 1416 NW Ballard Way, Seattle, WA 98107

## Ballard II - Level 2

SPACE	TENANT	SF
100-2	PCC COMMUNITY MARKETS	25,577
200-2	WEST MARINE	25,904
H	TRUFUSION	12,243



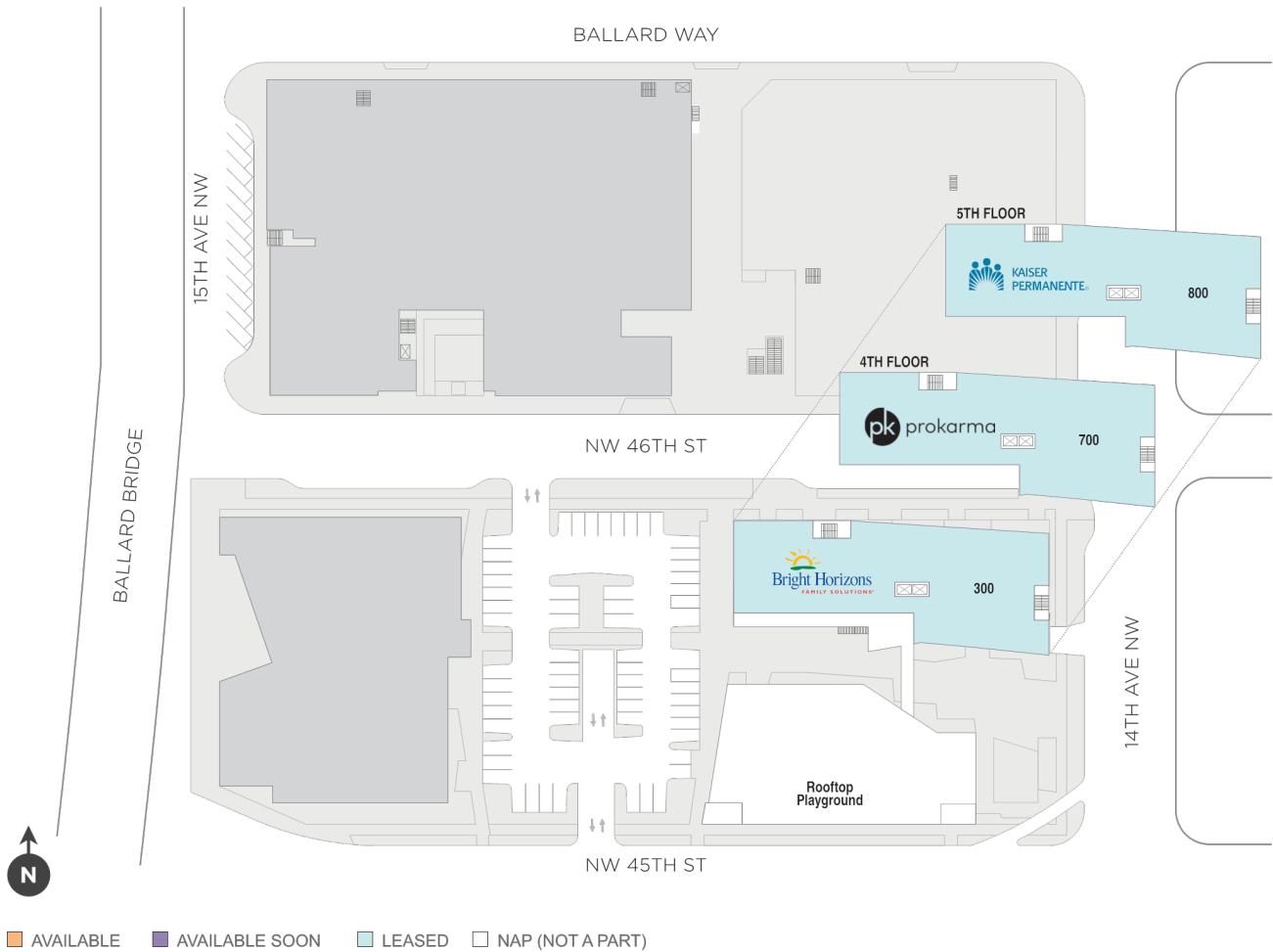
1 of 1 (Ballard II - Level 2 Site Plan)

# Ballard Blocks

1416 NW Ballard Way, Seattle, WA 98107

## Ballard II - Level 3-5

SPACE	TENANT	SF
300	BRIGHT HORIZONS	13,053
700	PROKARMA	13,251
800	KAISER PERMANENTE	12,654



1 of 1 (Ballard II - Level 3-5 Site Plan)