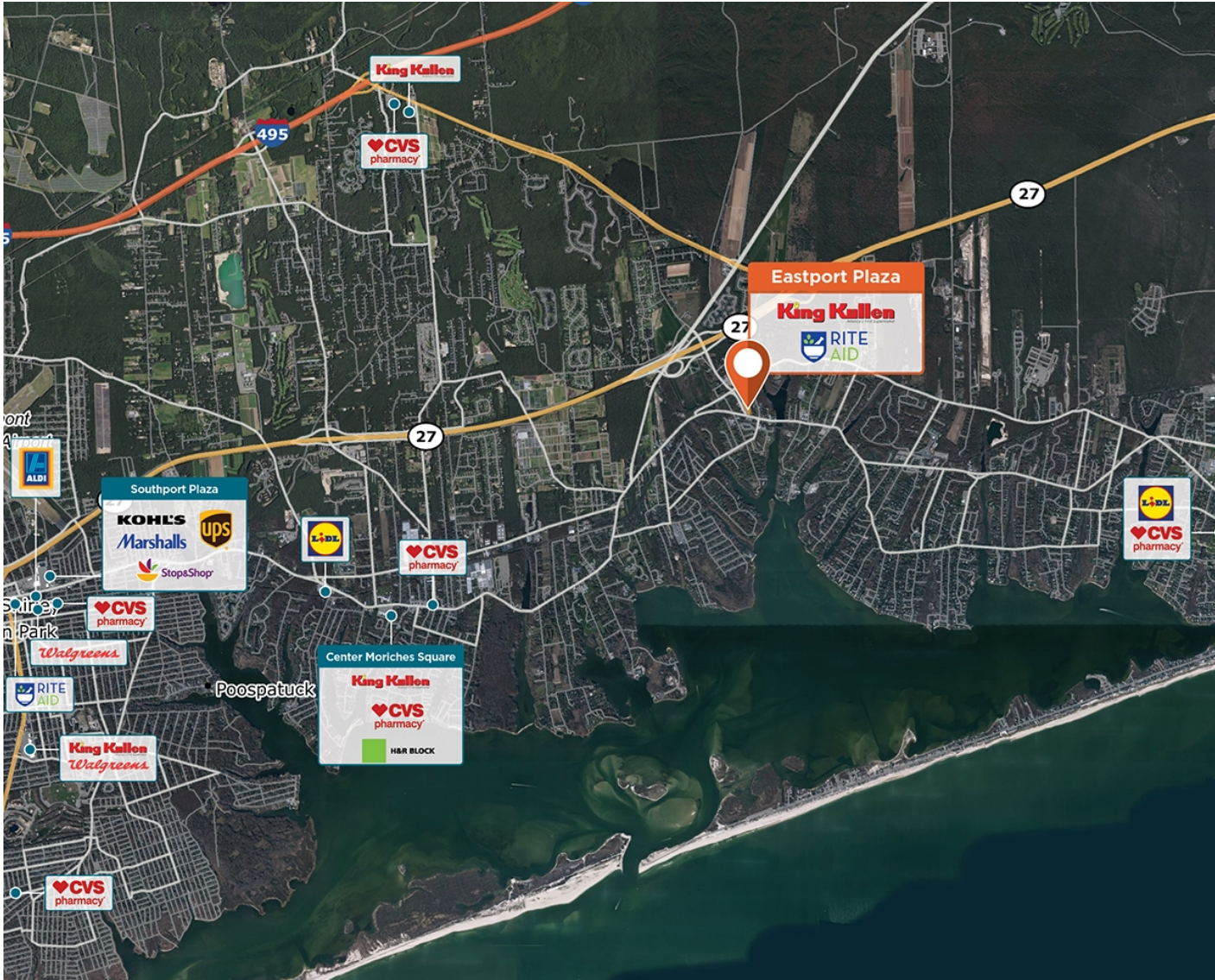


Eastport

📍 Eastport Manorville Rd & Monta, Eastport, NY 11941



The heart of Eastport located near Highway 27 with great demographics.

Center Size: 47,637
Spaces Available: 2

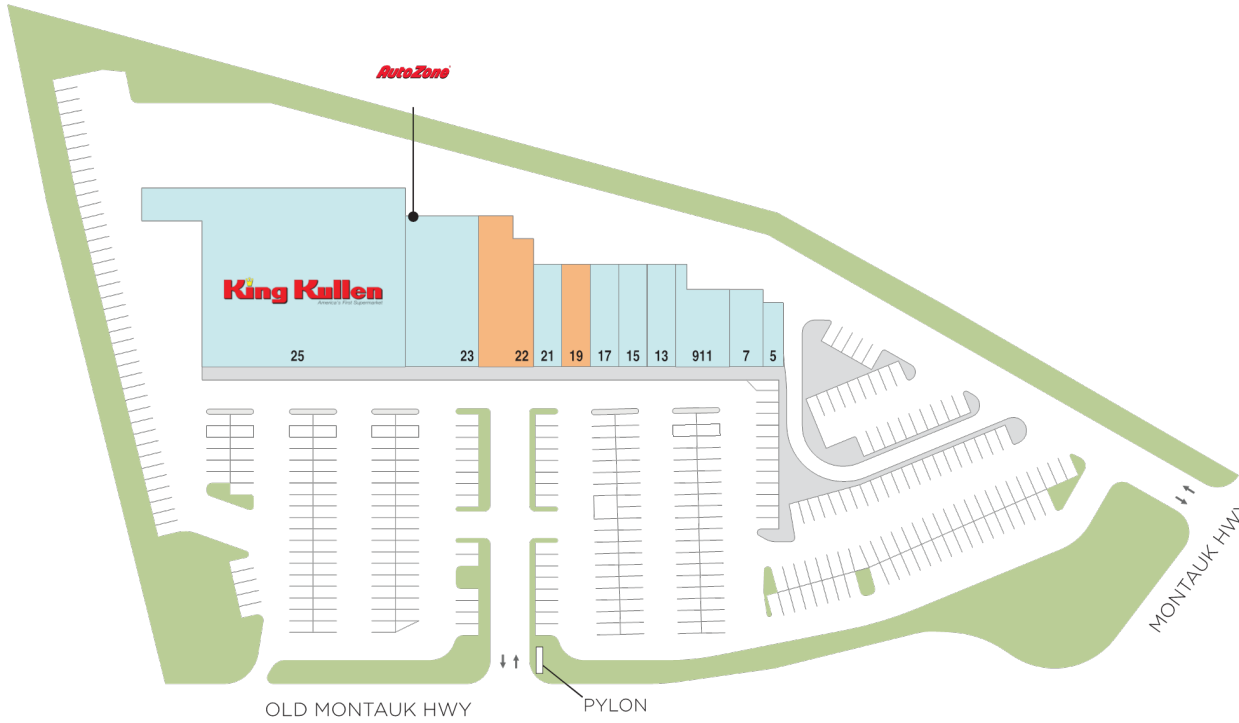
Within 3 Miles

Population	18,711
Avg. Household Income	177,412
Avg. Home Value	\$827,764
Annual Visits	681,206
Vehicles Per Day	10,190

Eastport

📍 Eastport Manorville Rd & Monta, Eastport, NY 11941

Center Size: 47,637



SPACE	TENANT	SF
19	AVAILABLE	1,280
22	AVAILABLE	4,431
05	SUFFOLK FEDERAL CREDIT UNION	1,585
07	MARINELLI JEWELERS	1,185
13	LOLAS KITCHEN & COCKTAILS	1,600
15	EASTPORT LIQUORS	1,530
17	HOTWORX	1,545
21	R&T MEDICAL PRIMARY CARE	1,850
23	AUTOZONE	7,081
25	KING KULLEN	22,400
911	MICHAELANGELO PIZZA	3,150



■ AVAILABLE
 ■ AVAILABLE SOON
 ■ LEASED
 NAP (NOT A PART)

1 of 1