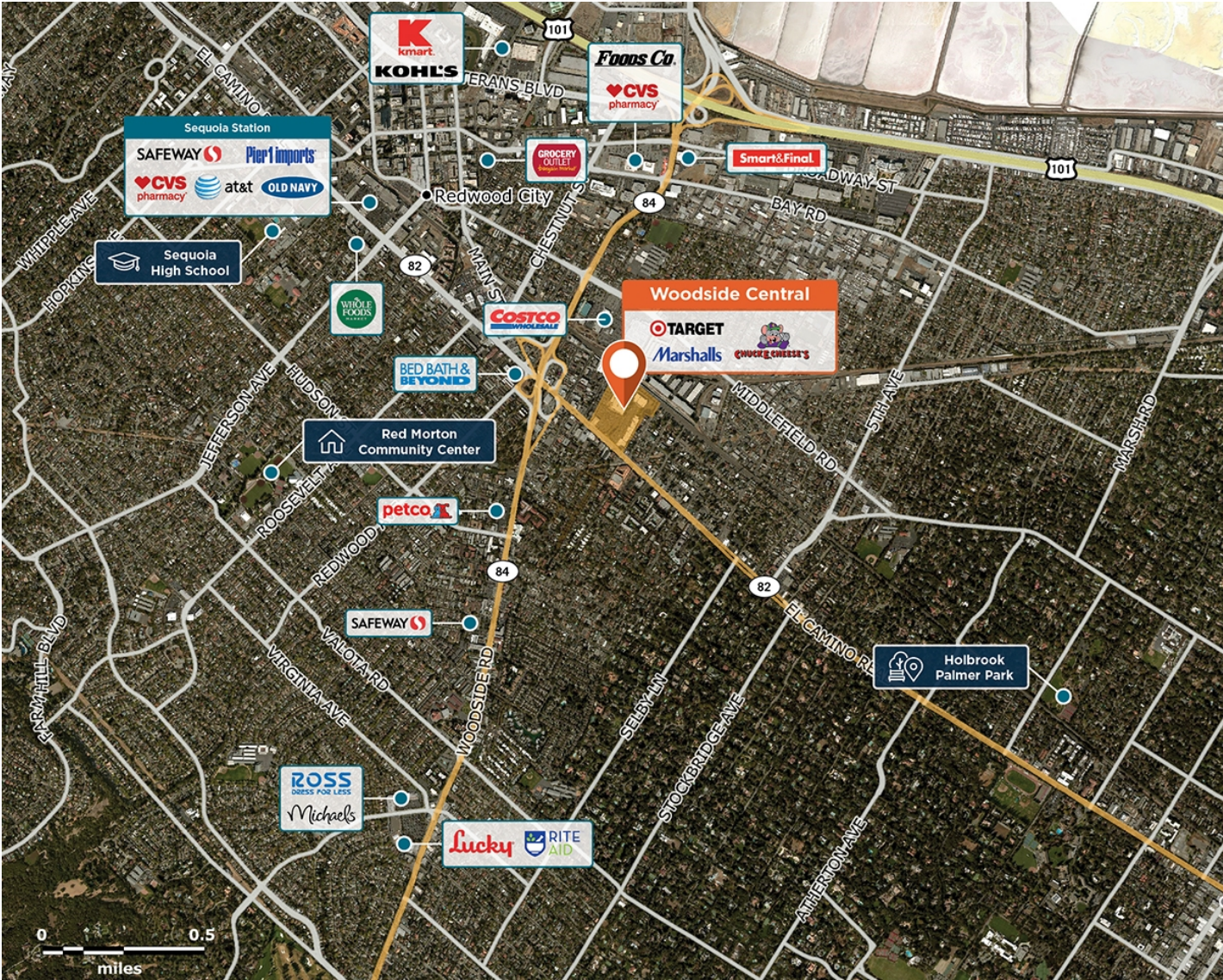


Woodside Central

📍 2501-2545 El Camino Real, Redwood City, CA 94061



Close to U.S. 101 on El Camino Real with easy access, good visibility, and a mix of strong national retailers.

Center Size: 80,591
Spaces Available: 2

Within 3 Miles

Population	131,372
Avg. Household Income	236,488
Avg. Home Value	\$1,933,490
Annual Visits	1,081,451
Vehicles Per Day	8,836

Woodside Central

📍 2501-2545 El Camino Real, Redwood City, CA 94061

Center Size: 80,591



SPACE	TENANT	SF
2513	AVAILABLE	4,226
2537B	AVAILABLE	1,058
2501	VERIZON WIRELESS	6,431
2513A	BATH & BODY WORKS	3,836
2517	SALONCENTRIC	3,310
2519	FABULOUS NAILS	2,196
2525	EL GRULLENSE	2,562
2527	GAMESTOP	1,511
2529	PANDORA MASSAGE PLACE	1,511
2531	SMILE CRAFT DENTAL GROUP	2,558
2533	CARTER'S	3,805
2535	SALLY BEAUTY SUPPLY	2,223
2537A	TIGER TAEKWONDO	1,723
2539	GROWING IQ	1,222
2541	CHUCK E. CHEESE	12,119
2545	MARSHALLS	30,300
NAP 2	TARGET	0

N

1 of 1

AVAILABLE

AVAILABLE SOON

LEASED

NAP (NOT A PART)