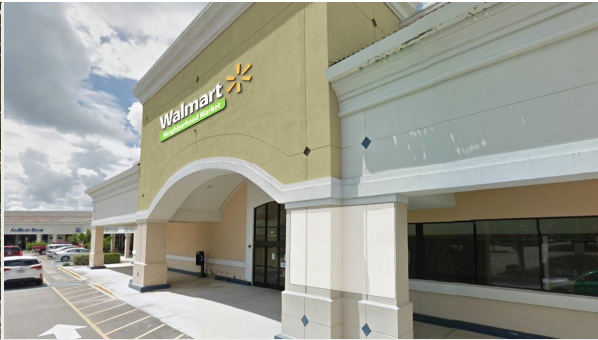
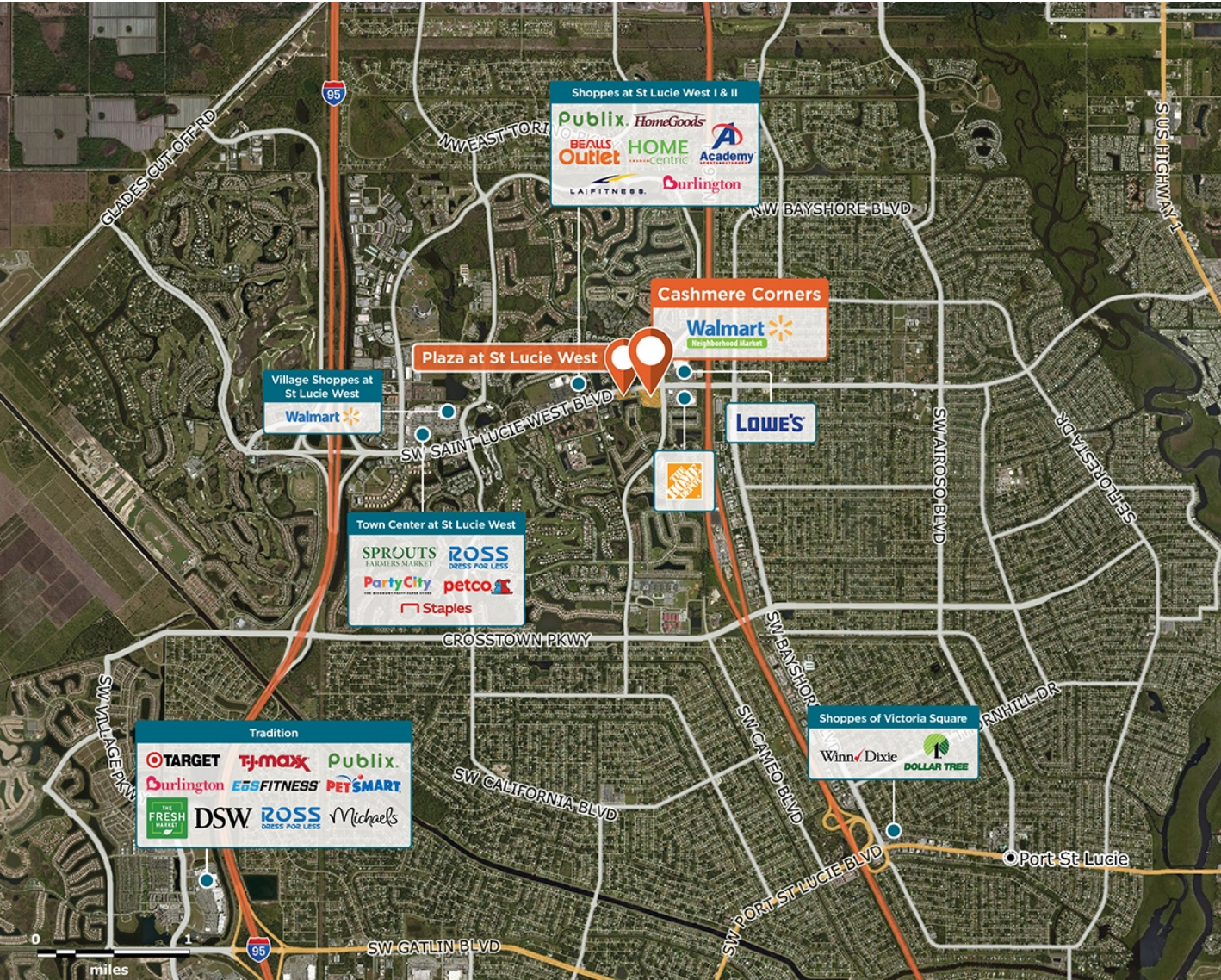


# Cashmere Corners

📍 870 St. Lucie W Blvd, Port St. Lucie, FL 34986



A neighborhood center with strong daytime traffic from Memorial Medical Center and nearby offices.

**Center Size:** 85,708  
**Spaces Available:** 0

**Within 3 Miles**

Population	79,422
Avg. Household Income	100,452
Avg. Home Value	\$423,219
Annual Visits	1,951,828
Vehicles Per Day	54,374



# Cashmere Corners

870 St. Lucie W Blvd, Port St. Lucie, FL 34986

Center Size: 85,708



SPACE	TENANT	SF
OP1	AVAILABLE	0.42 Acres
01	WAL-MART	45,880
01-A	CONVIVA CARE CENTER	12,042
03	REGENCY DENTAL	3,437
05	LSO JEWELRY & REPAIR	1,053
06	ST LUCIE CLEANERS	1,052
07	FLORIDA NAILS	1,050
08	CHINA KITCHEN II	1,400
11-12	ORANGETHEORY FITNESS	2,873
14	LA PAISITACOLOMBIANBAKERY&REST	1,800
15	D & F BARBERSHOP	1,965
16	FLAGSTAR BANK	2,100
17	BIG APPLE PIZZA	1,456
18	RED CRAB	6,500
9 - 10	SWEET TEA TREASURES	3,100

1 of 1