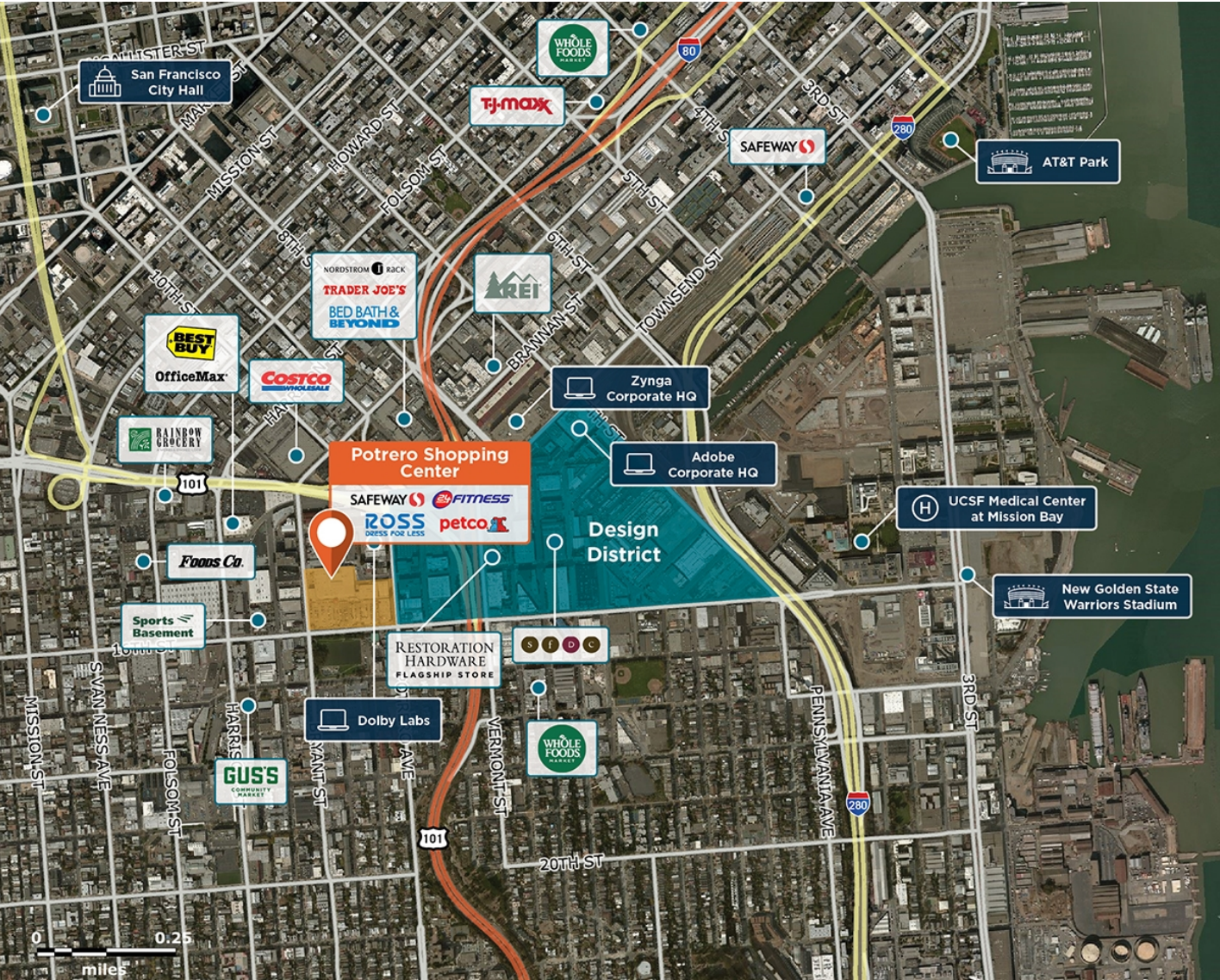


# Potrero Center

📍 2300 16th Street, San Francisco, CA 94103



A power center in the Mission of San Francisco, with excellent visibility from three major roads.

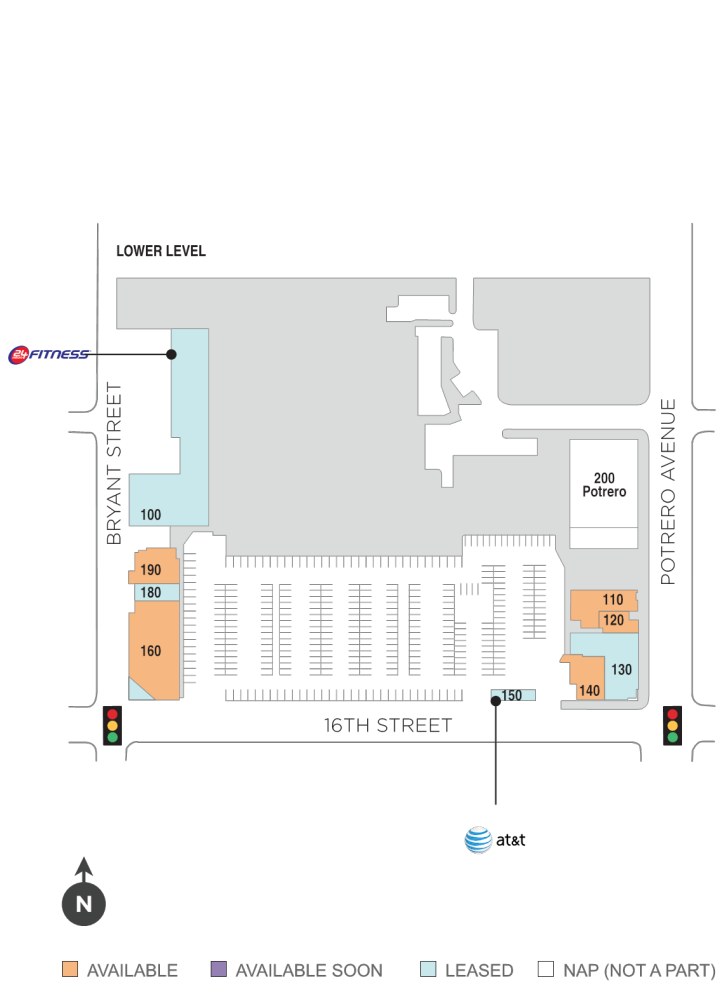
**Center Size:** 226,642  
**Spaces Available:** 7

### Within 3 Miles

Population	546,576
Avg. Household Income	207,616
Avg. Home Value	\$1,523,644
Annual Visits	3,255,769
Vehicles Per Day	21,587

# Potrero Center

📍 2300 16th Street, San Francisco, CA 94103



Center Size: 226,642

SPACE	TENANT	SF
110	AVAILABLE	4,597
120	AVAILABLE (Restaurant)	1,900
140	AVAILABLE (Restaurant)	3,144
160	AVAILABLE	10,747
190	AVAILABLE	3,890
210	AVAILABLE	38,370
340A	AVAILABLE (Restaurant)	2,713
100	24 HOUR FITNESS	27,105
130	O'REILLY AUTO PARTS	7,215
150	AT&T	915
180	H&R BLOCK	1,487
200	PETCO	13,070
240	SAFEWAY	59,566
250	PEET'S COFFEE & TEA	1,673
260	JAMBA JUICE	969
270	NOAH'S NEW YORK BAGELS	1,688
280	SALLY BEAUTY SUPPLY	1,633
290	ROSS DRESS FOR LESS	25,277
300	TOGO'S	1,500
310	AAA	5,680
320	MANCINI'S SLEEPWORLD	5,200
330	CHASE BANK	4,486
340	COMCAST	3,317
350	EYEBROW SHAPERS	280

1 of 1